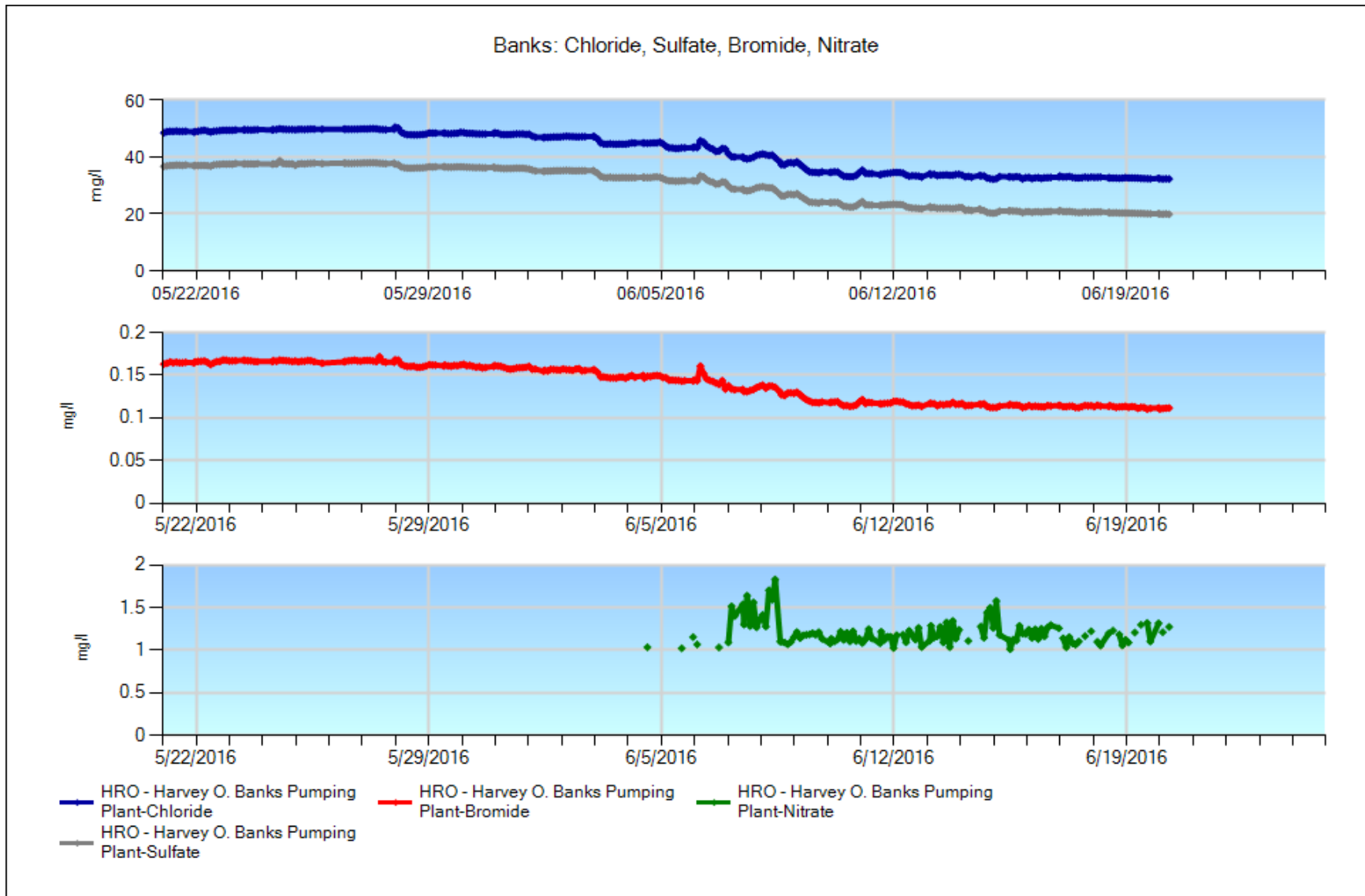
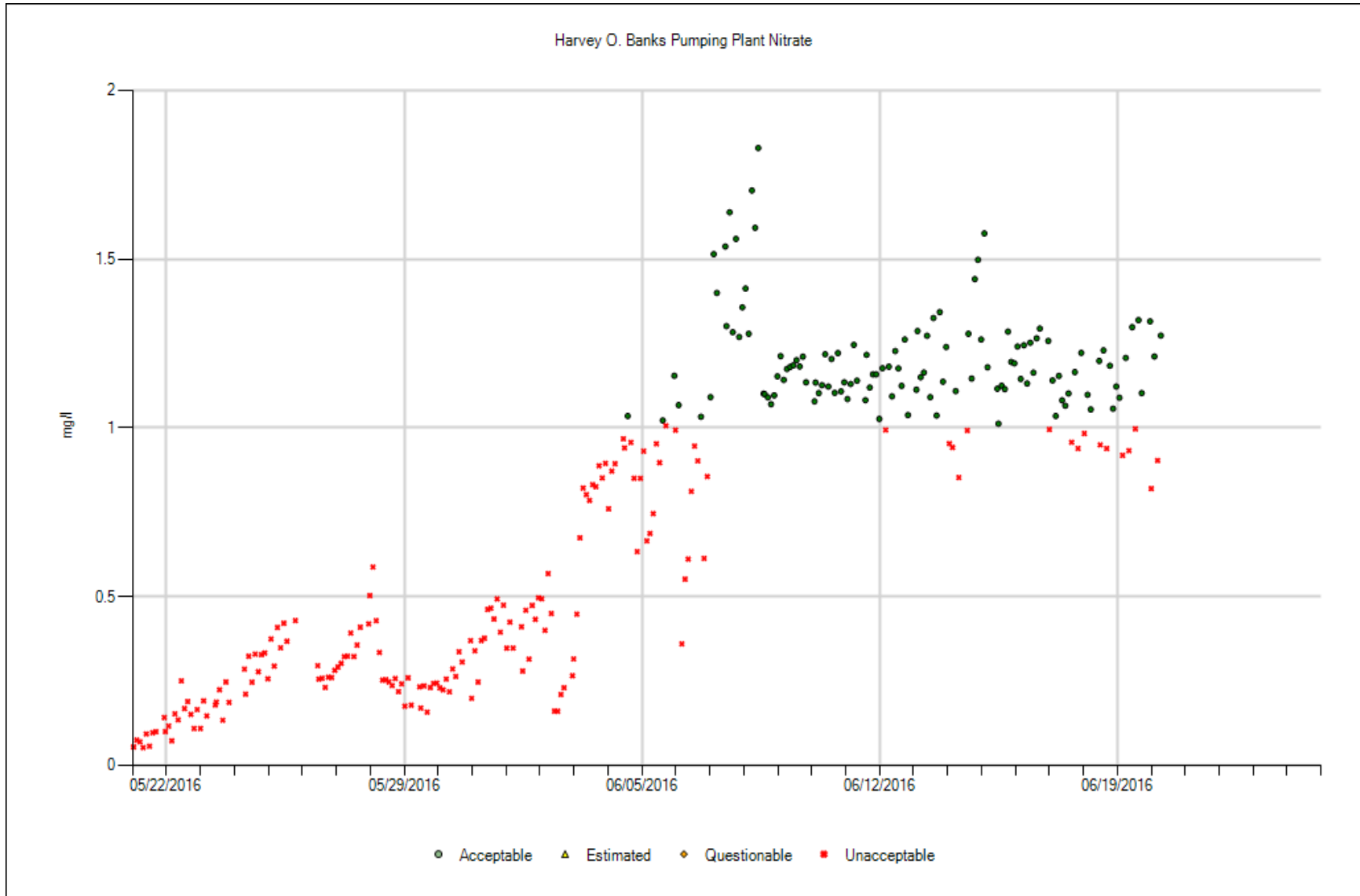


5/26: QC analysis, 100, 50 and 0.45 um filters changed **6/2:** All delivery system filters changed **6/8:** All delivery system filters changed **6/15:** QC analysis, 100 and 0.45 um filters changed **6/21:** All delivery system filters changed

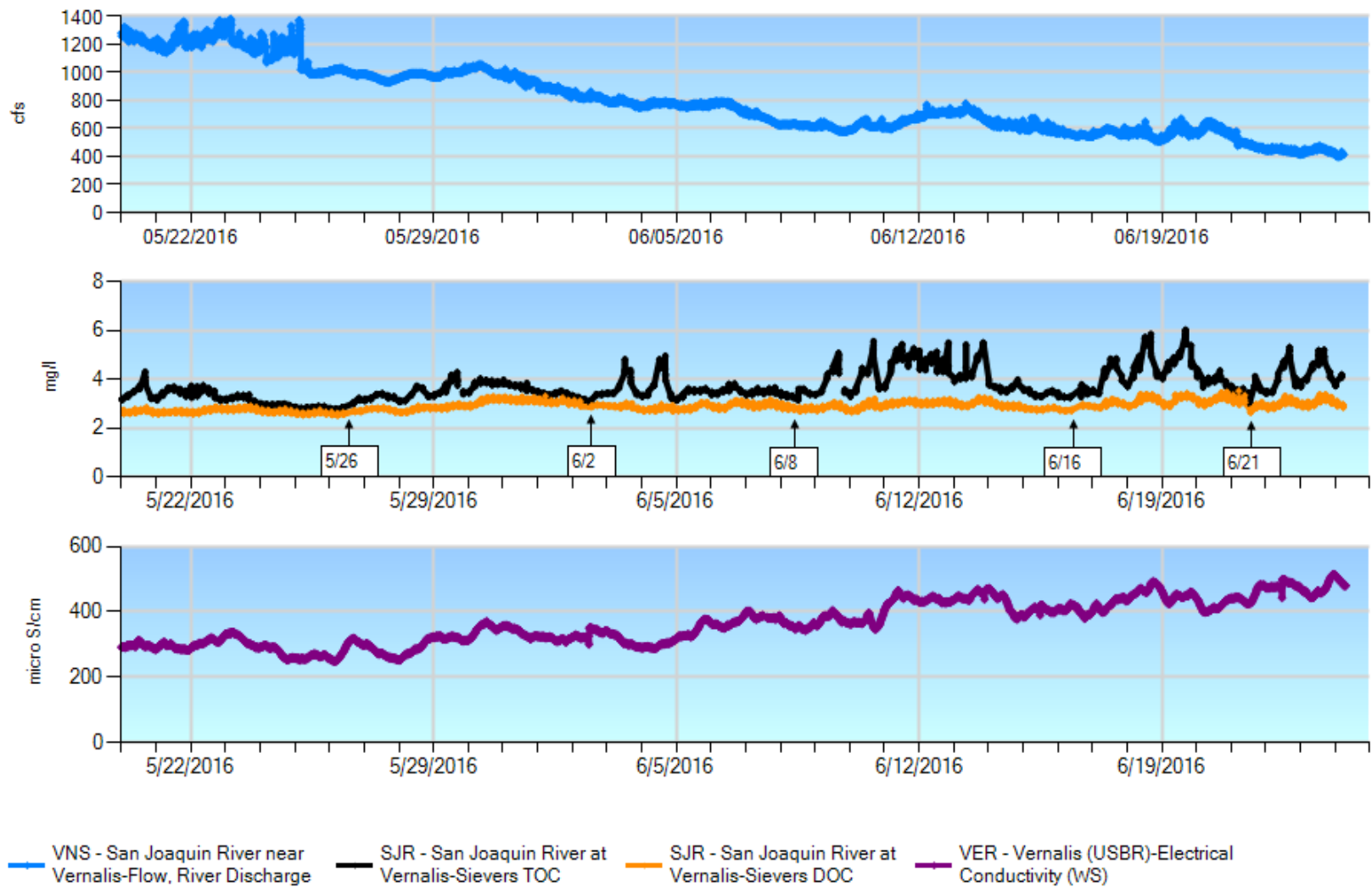


5/26: QC analysis, 100, 50 and 0.45 um filters changed **6/2:** All delivery system filters changed **6/8:** All delivery system filters changed **6/15:** QC analysis, 100 and 0.45 um filters changed **6/20:** Anion analyzer over pressure, instrument down **6/21:** All delivery system filters changed

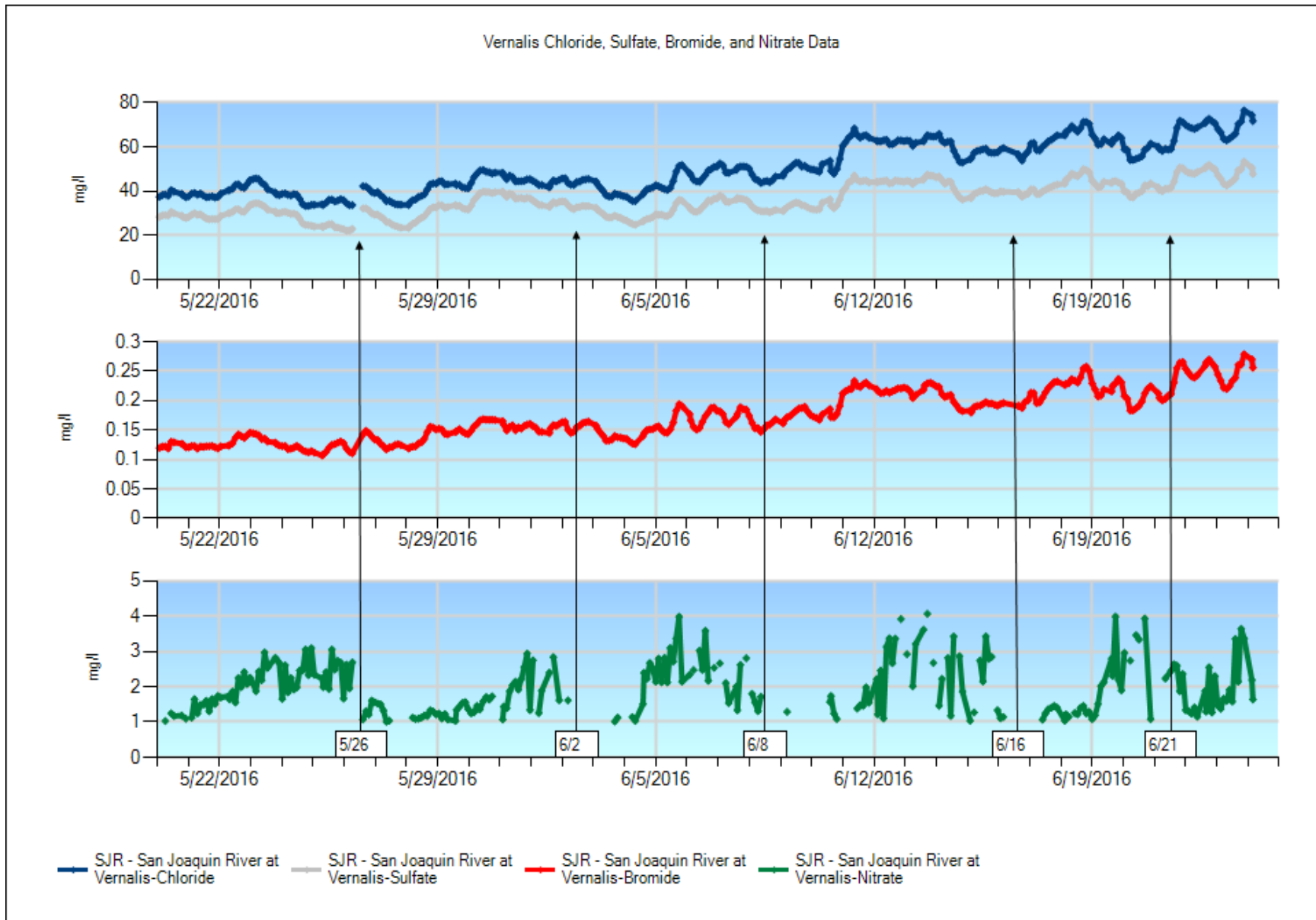
Nitrate Reporting Limit = 1 mg/L



Vernalis Flow, Organic Carbon, and Electrical Conductivity Data

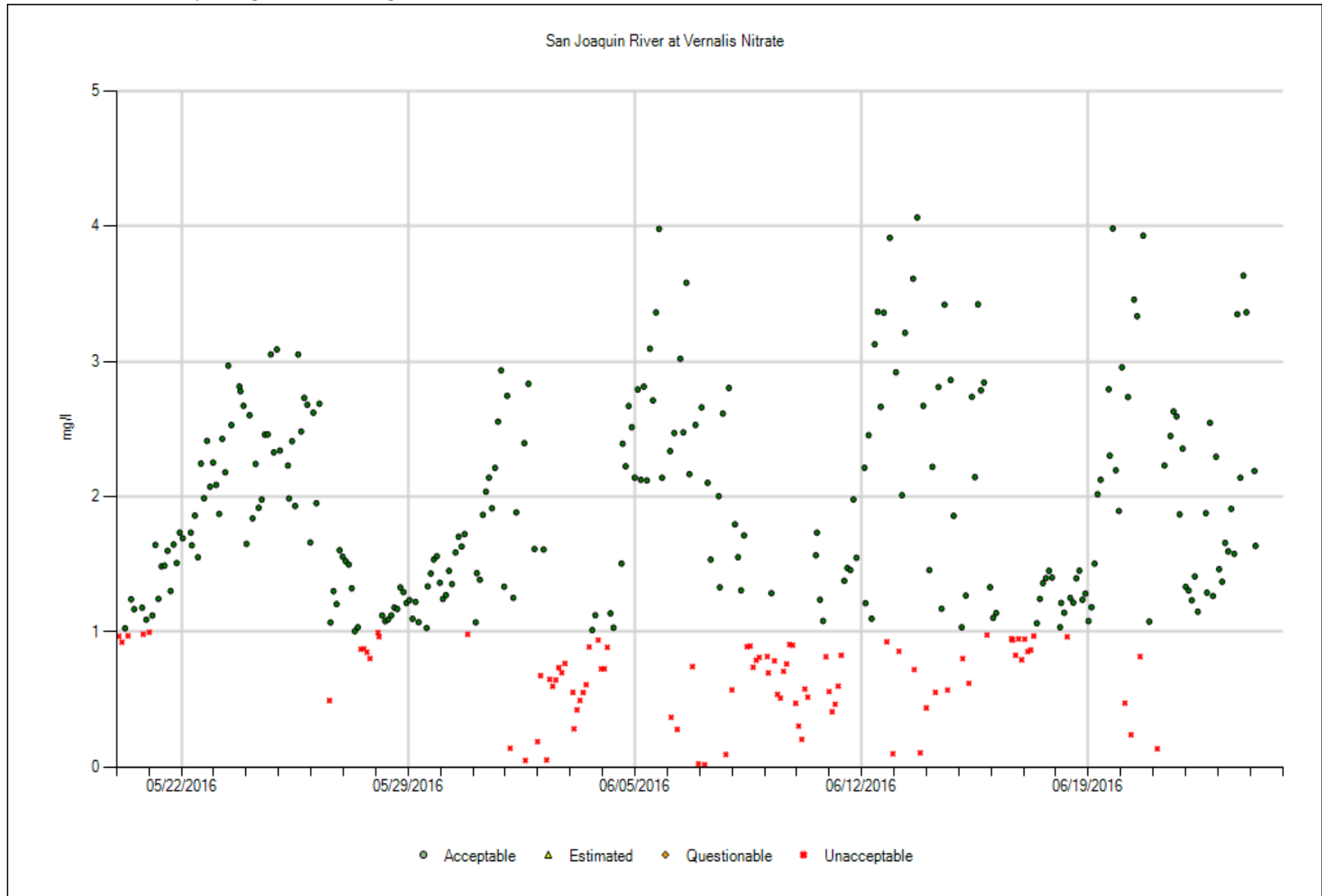


Filter Changes: 5/26, 6/8, 6/16 = All filters. 6/2, 6/21 = Prefilters only. **Events:** 5/26 = QC. 6/16 = QC and clean IOS. **Fire** between 5/26 & 6/2.

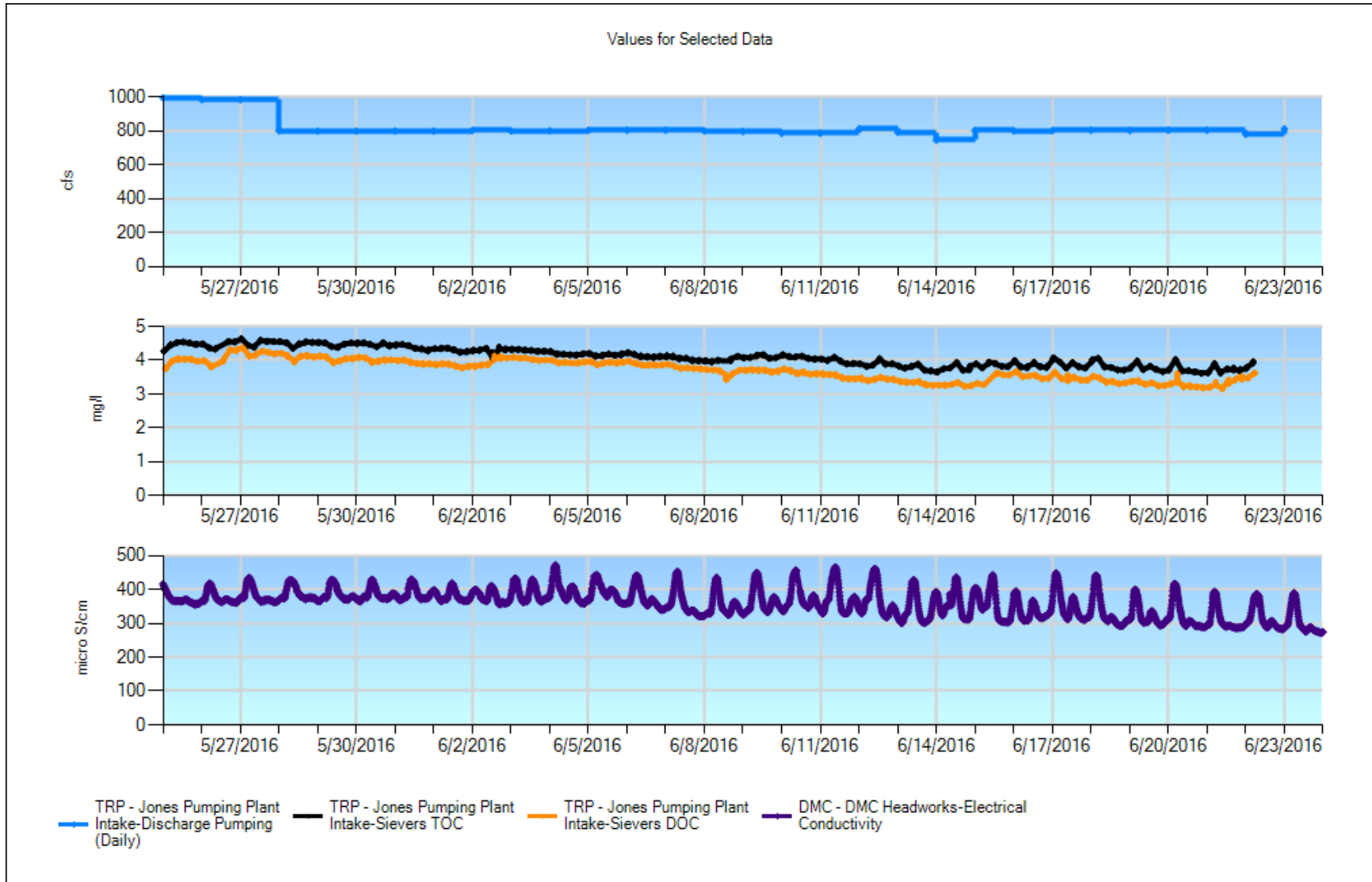


Events: 5/26, 6/16 = QC. 6/2, 6/8, 6/21 = Filter changes.

Nitrate raw data. Reporting limit of 1.0 mg/L.

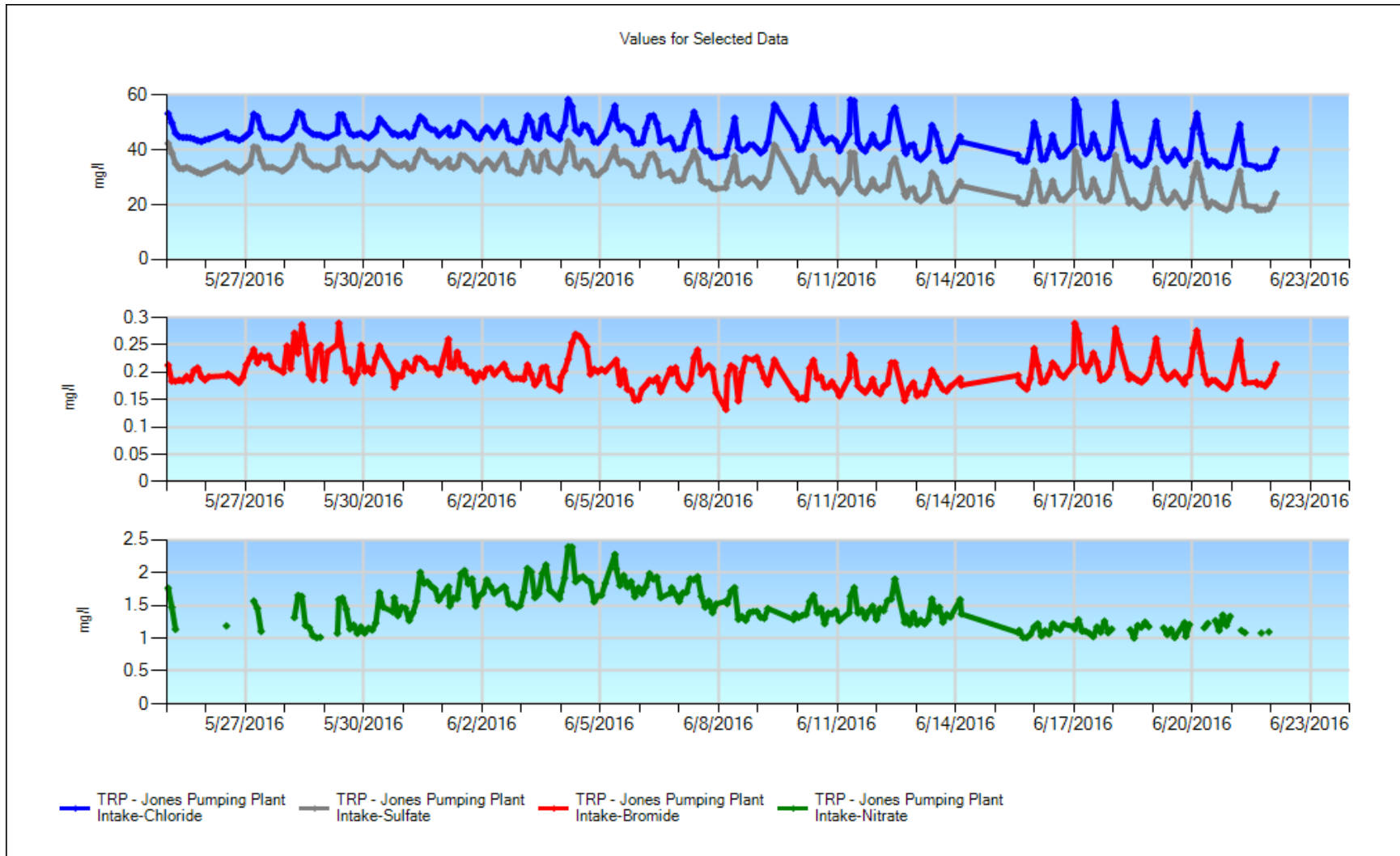


Jones PP – Discharge, Organic Carbon and EC

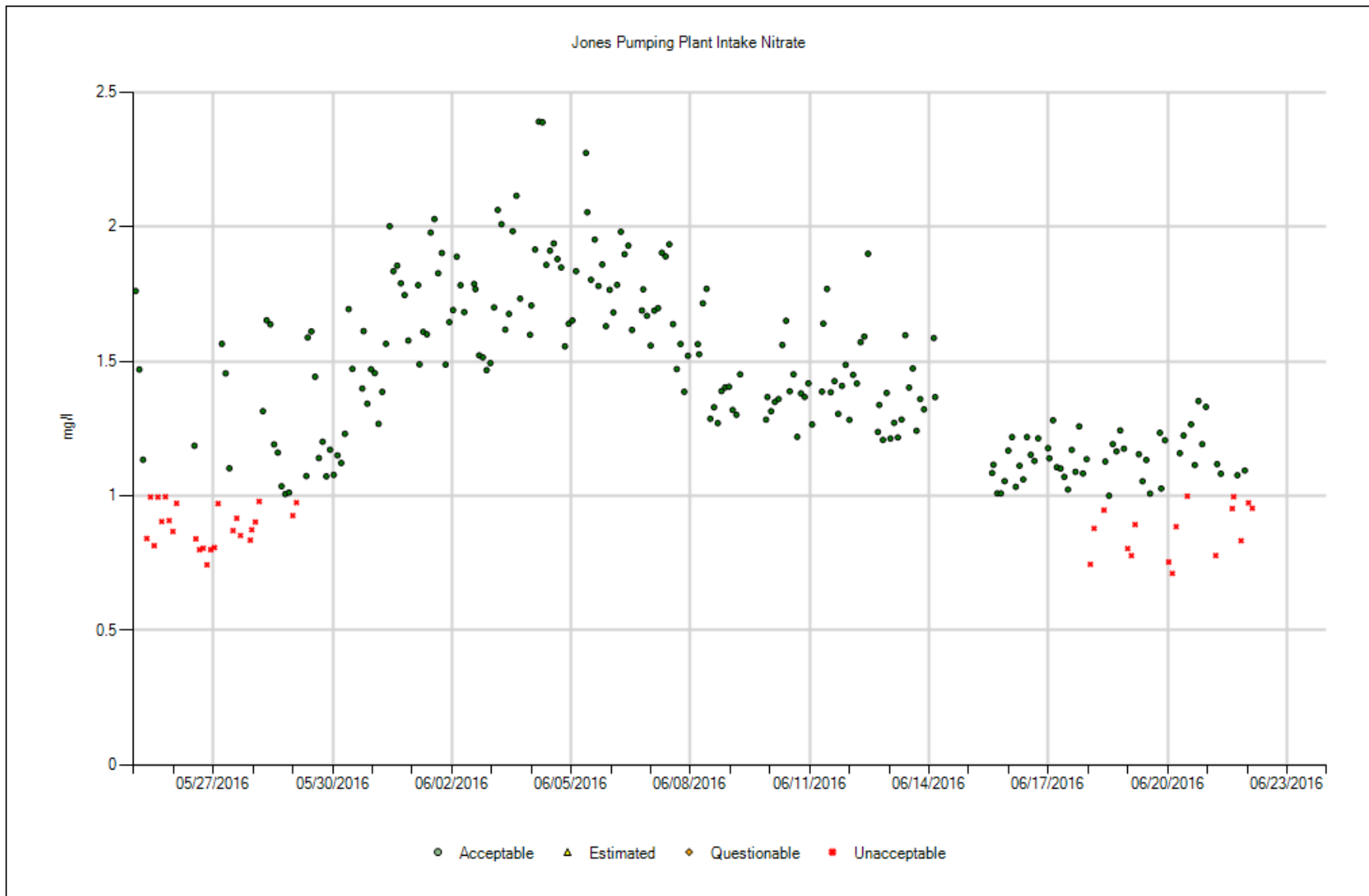


5/26 – filter change 6/2 – filter change 6/8 – filter change 6/15 – filter change 6/21 – filter change 6/22 – 6/24 - power outage

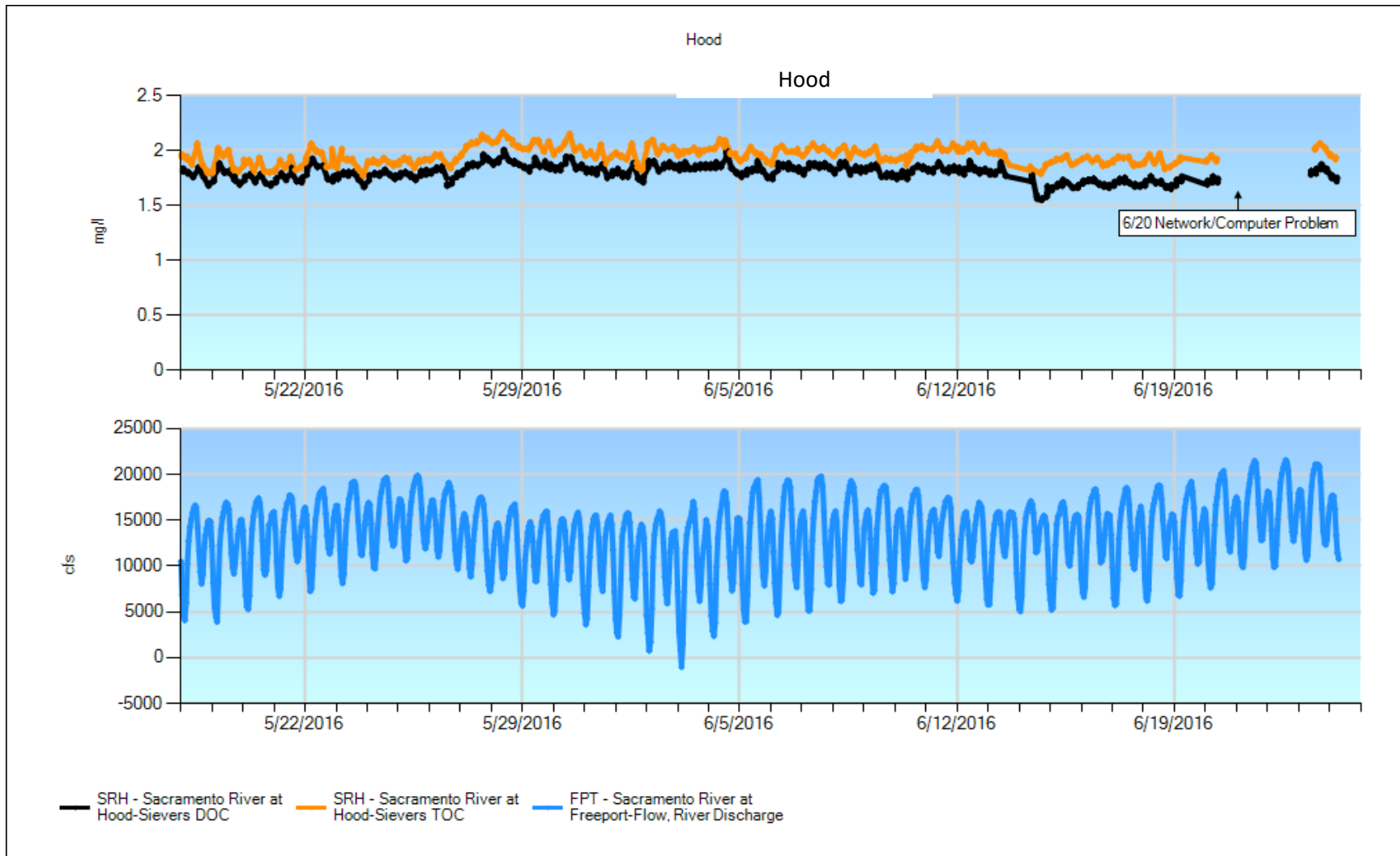
Jones PP – Chloride, Sulfate, Bromide and Sulfate



5/26 – made new check standard **6/14 – 6/15** – Brief data gap due to recalibration of the Dionex. **6/21** – remade check standard. **6/22 – 6/24** – power outage. **Note:** Nitrate periodically falls below the reporting limit of 1.0 mg/l.



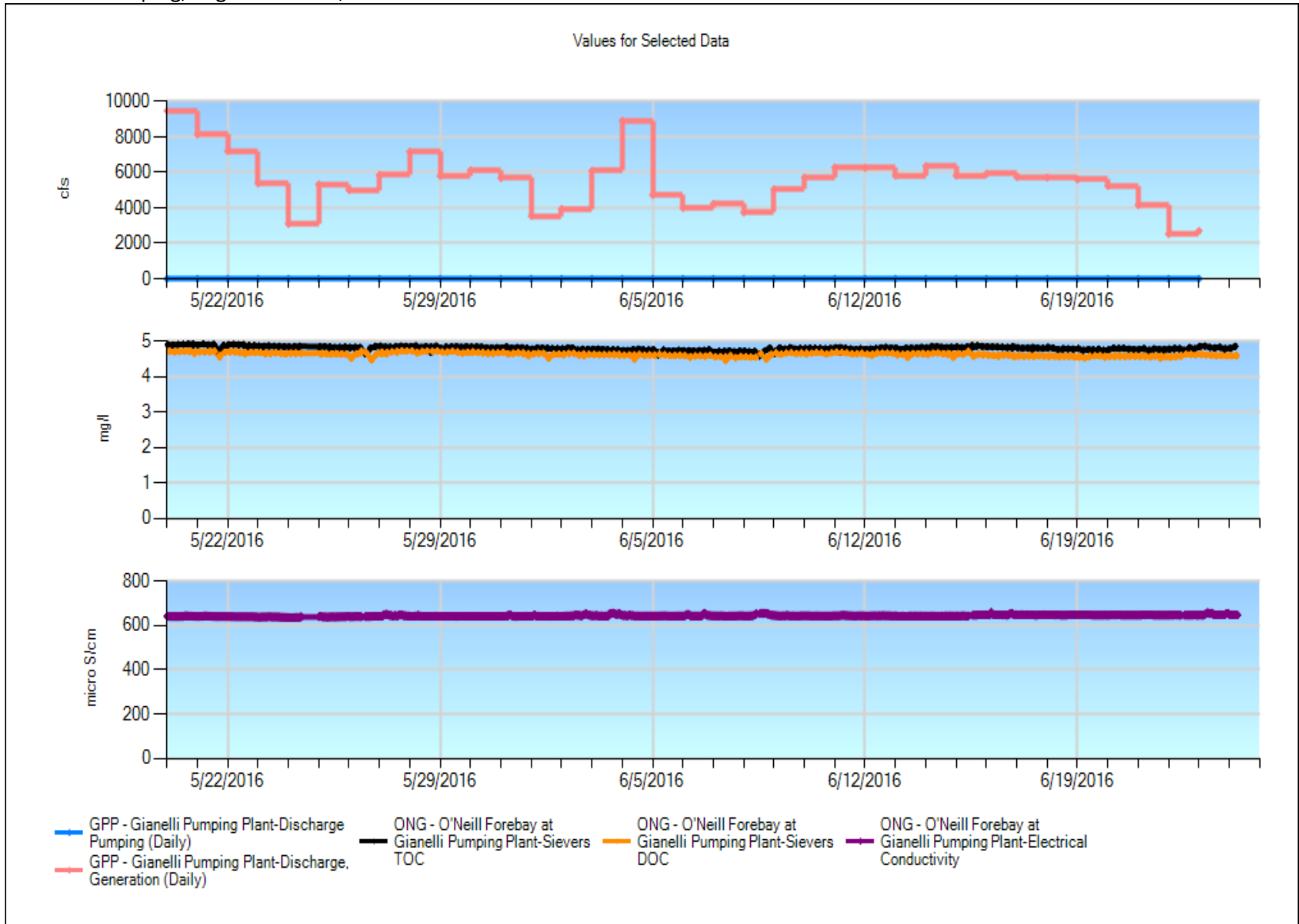
Reporting limit: 1.0 mg/l



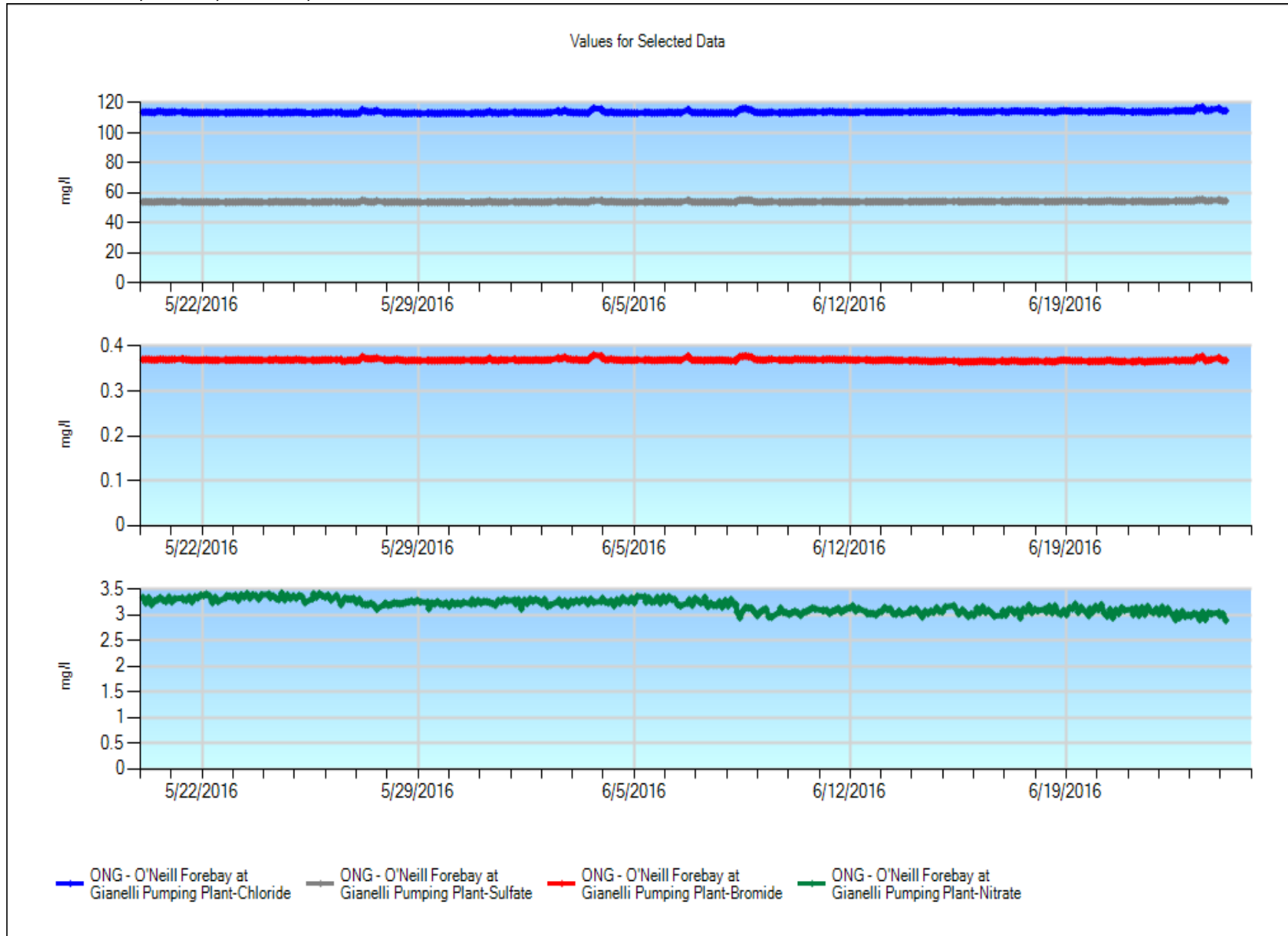
Significant Events: May 18th 2016 to June 25th 2016

- **6/20 Network/computer Problem:** Hood was not reporting to CDEC due to an error with the network where data wasn't transferring remotely. Restarting the computer seemed to fix the problem but the underlying cause is still unknown.

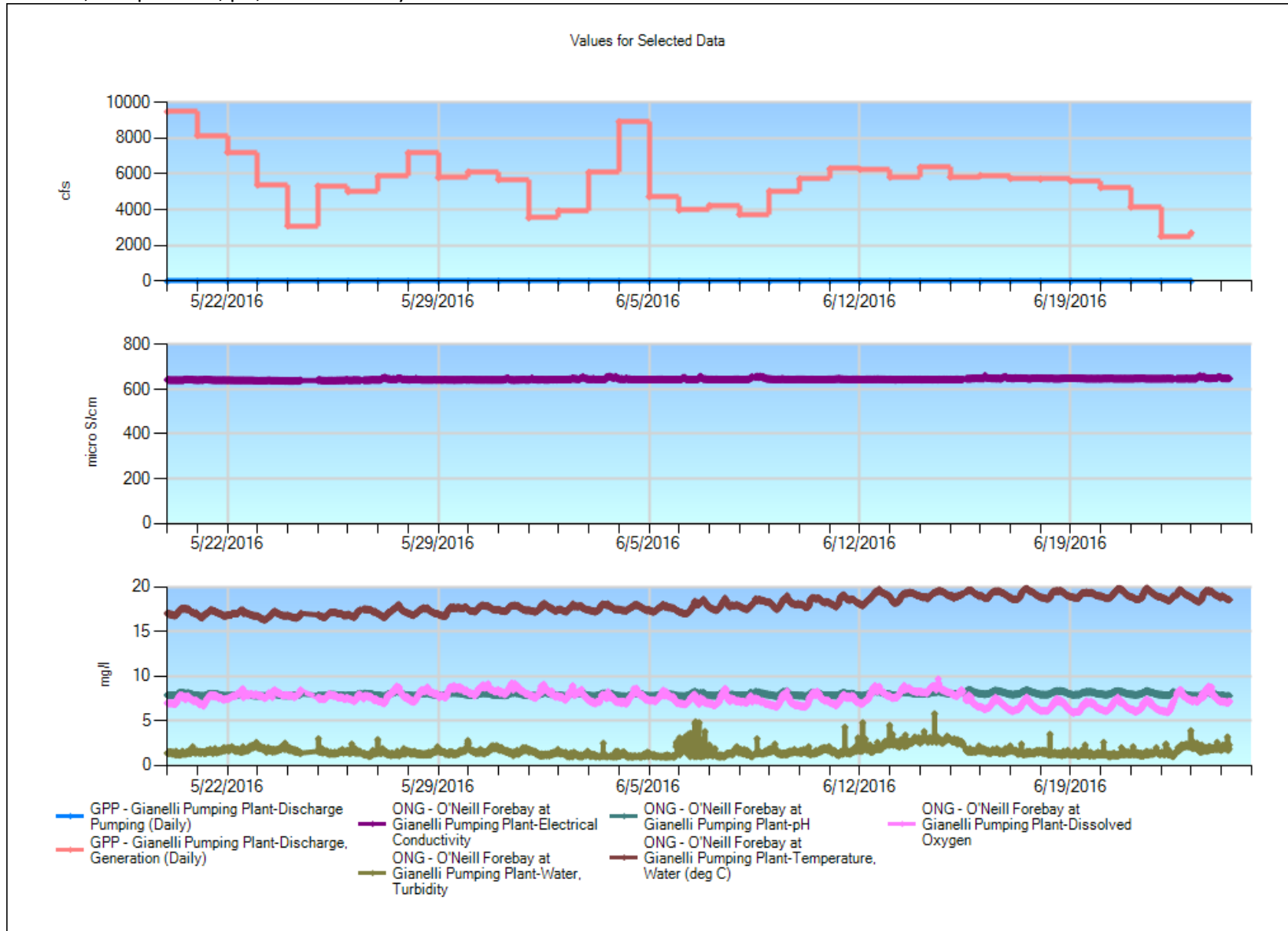
Gianelli – Pumping, Organic Carbon, EC



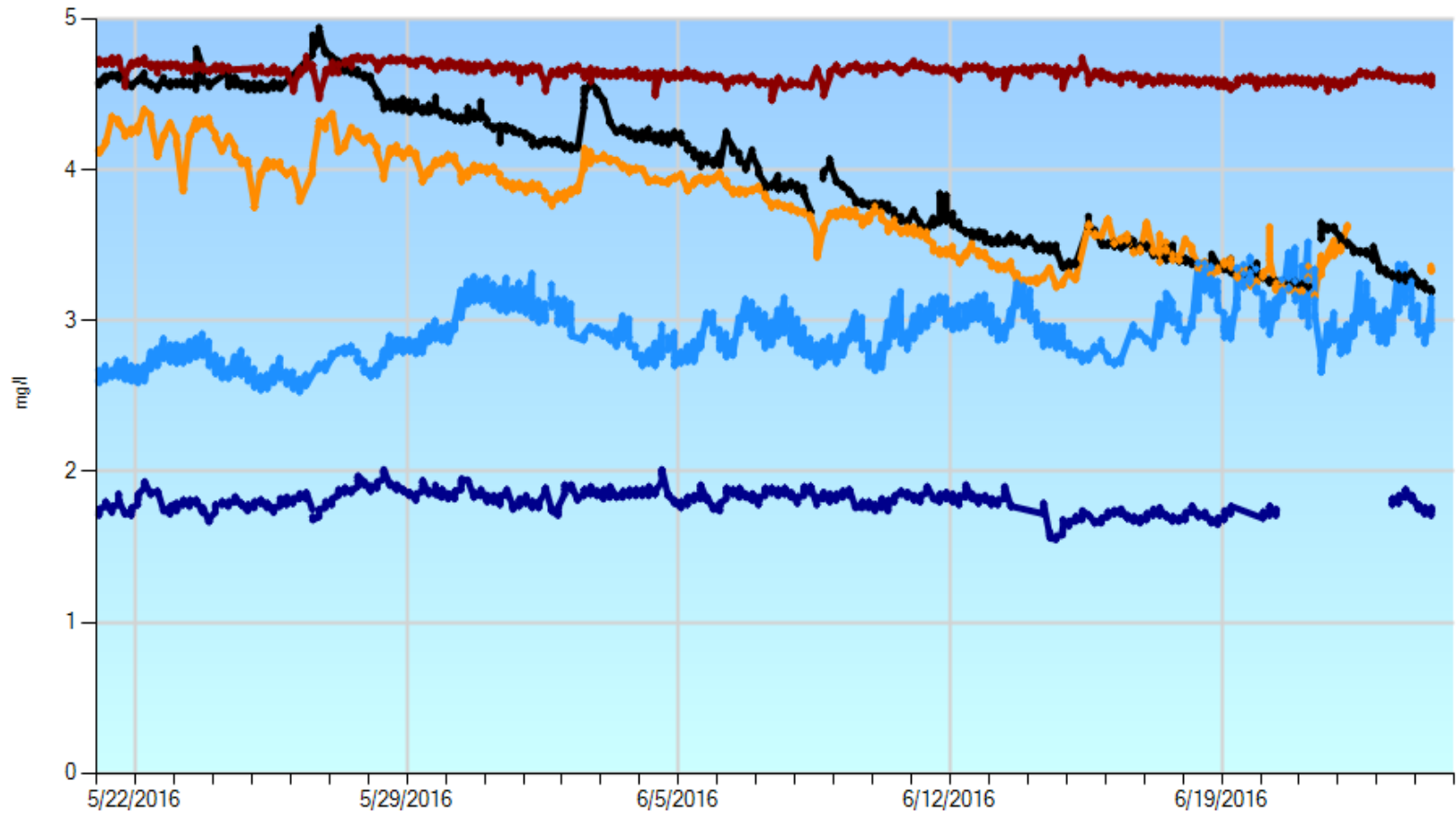
Gianelli – Chloride, Sulfate, Bromide, Nitrate



Gianelli – EC, Temperature, pH, DO & Turbidity

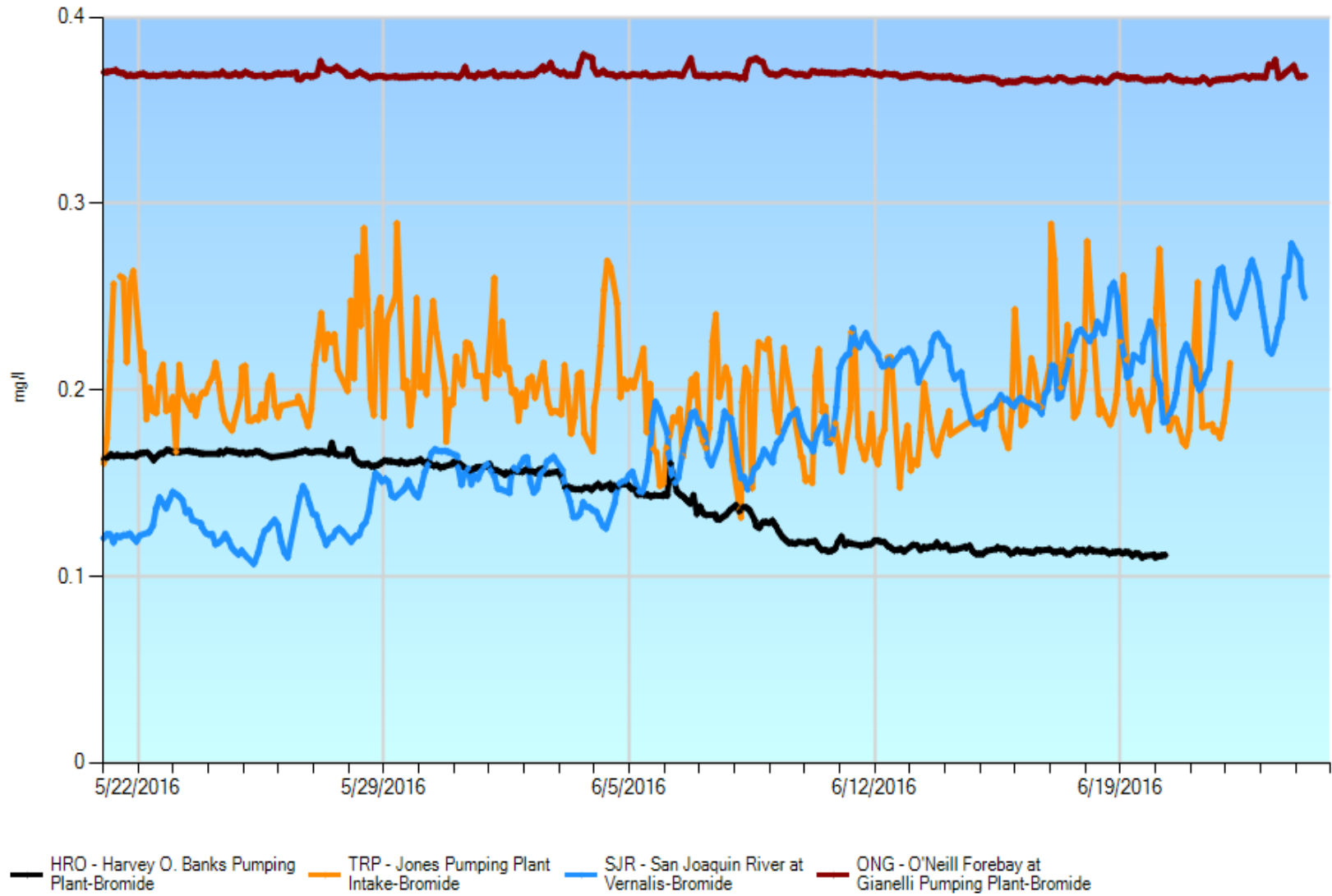


All Station DOC

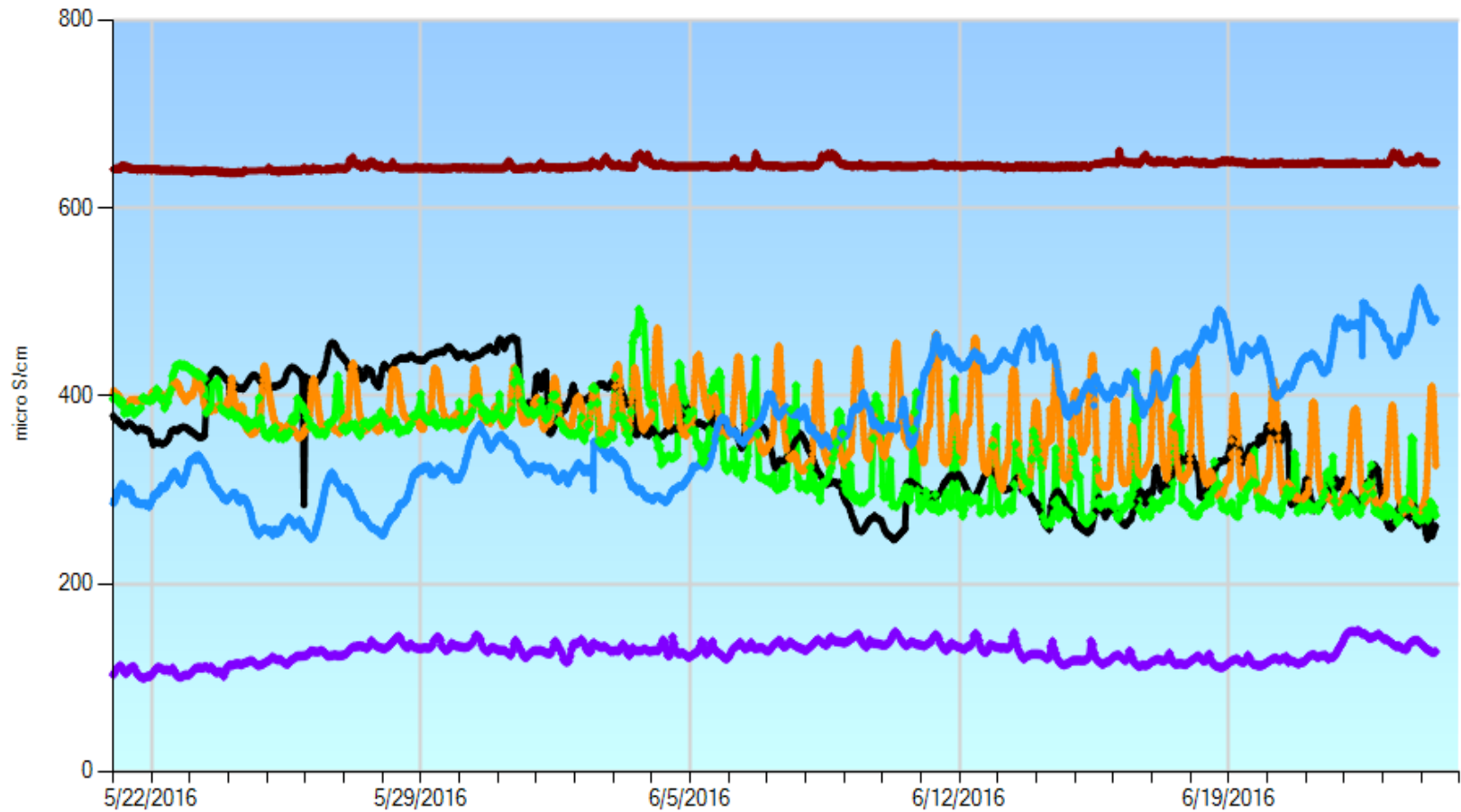


— HRO - Harvey O. Banks Pumping Plant-Sievers DOC — SJR - San Joaquin River at Vernalis-Sievers DOC — ONG - O'Neill Forebay at Gianelli Pumping Plant-Sievers DOC — SRH - Sacramento River at Hood-Sievers DOC
— TRP - Jones Pumping Plant Intake-Sievers DOC

Banks, Jones, Vernalis, Gianelli - Bromide

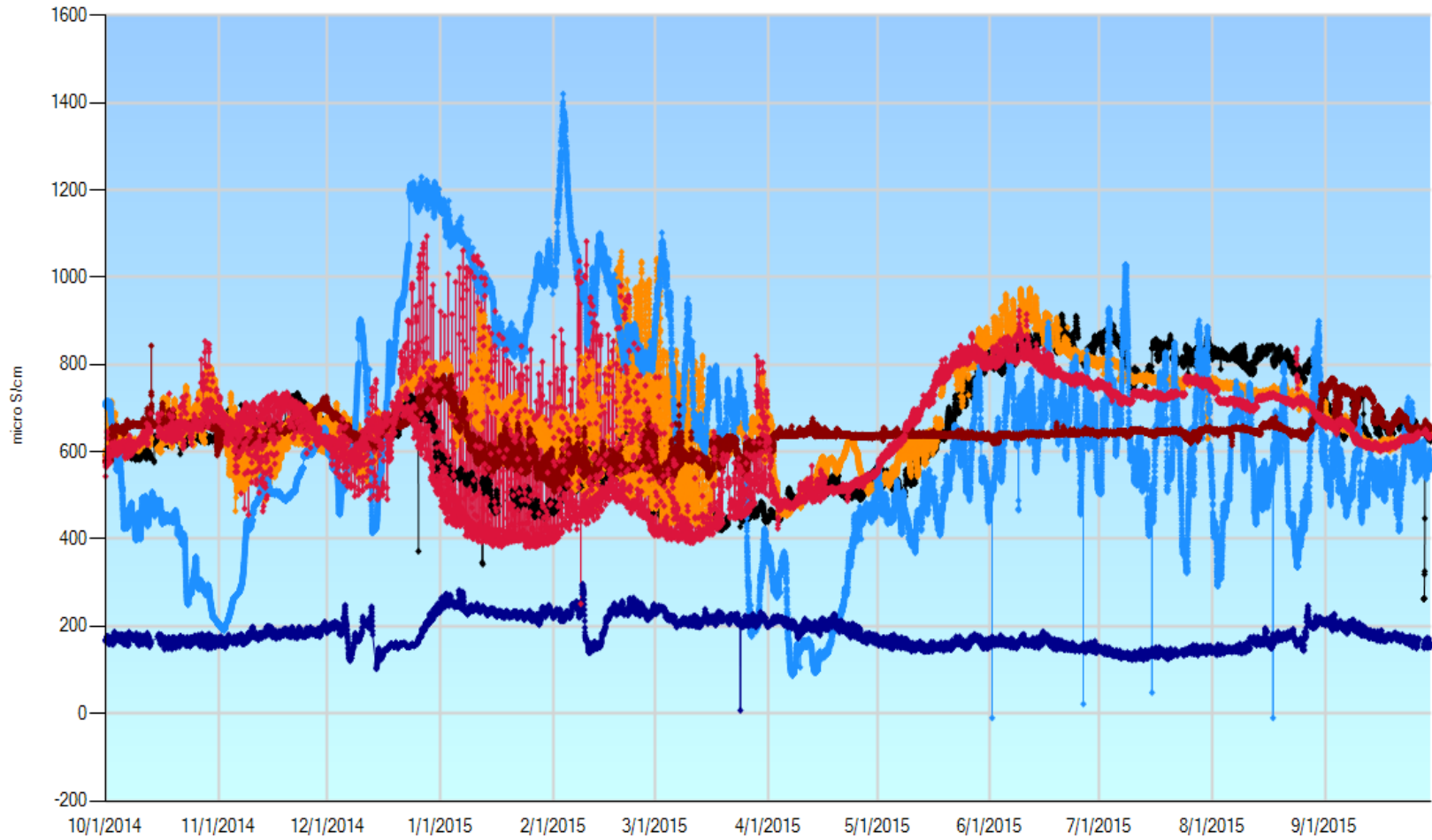


All Station + Clifton Court EC



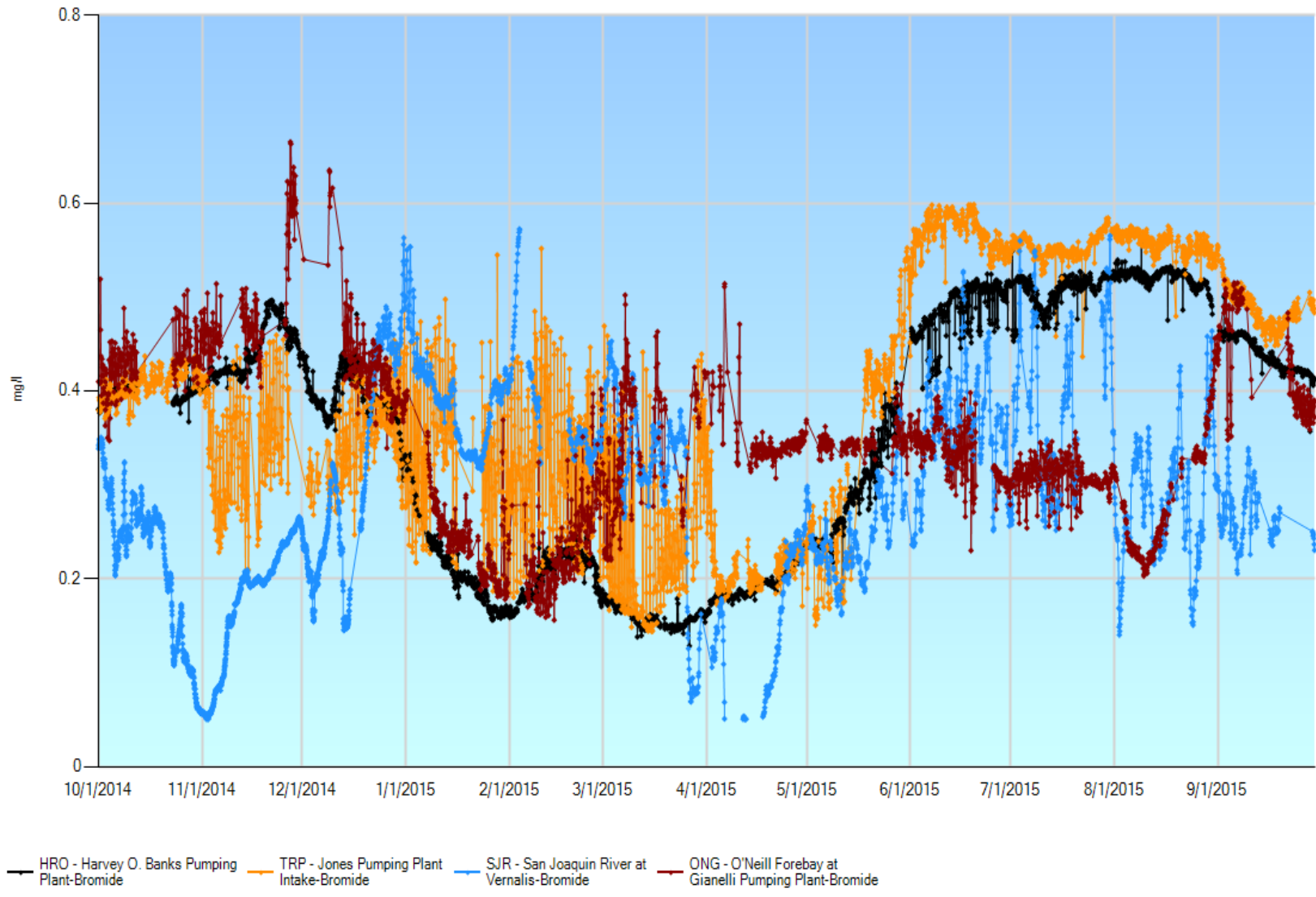
- HBP - Harvey Banks Pumping Plant-Electrical Conductivity (WS)
- DMC - DMC Headworks-Electrical Conductivity
- VER - Vernalis (USBR)-Electrical Conductivity (WS)
- ONG - O'Neill Forebay at Gianelli Pumping Plant-Electrical Conductivity
- CLC - Clifton Court-Electrical Conductivity (WS)
- SRH - Sacramento River at Hood-Electrical Conductivity (WS)

Water Year 2014 - 2015 EC

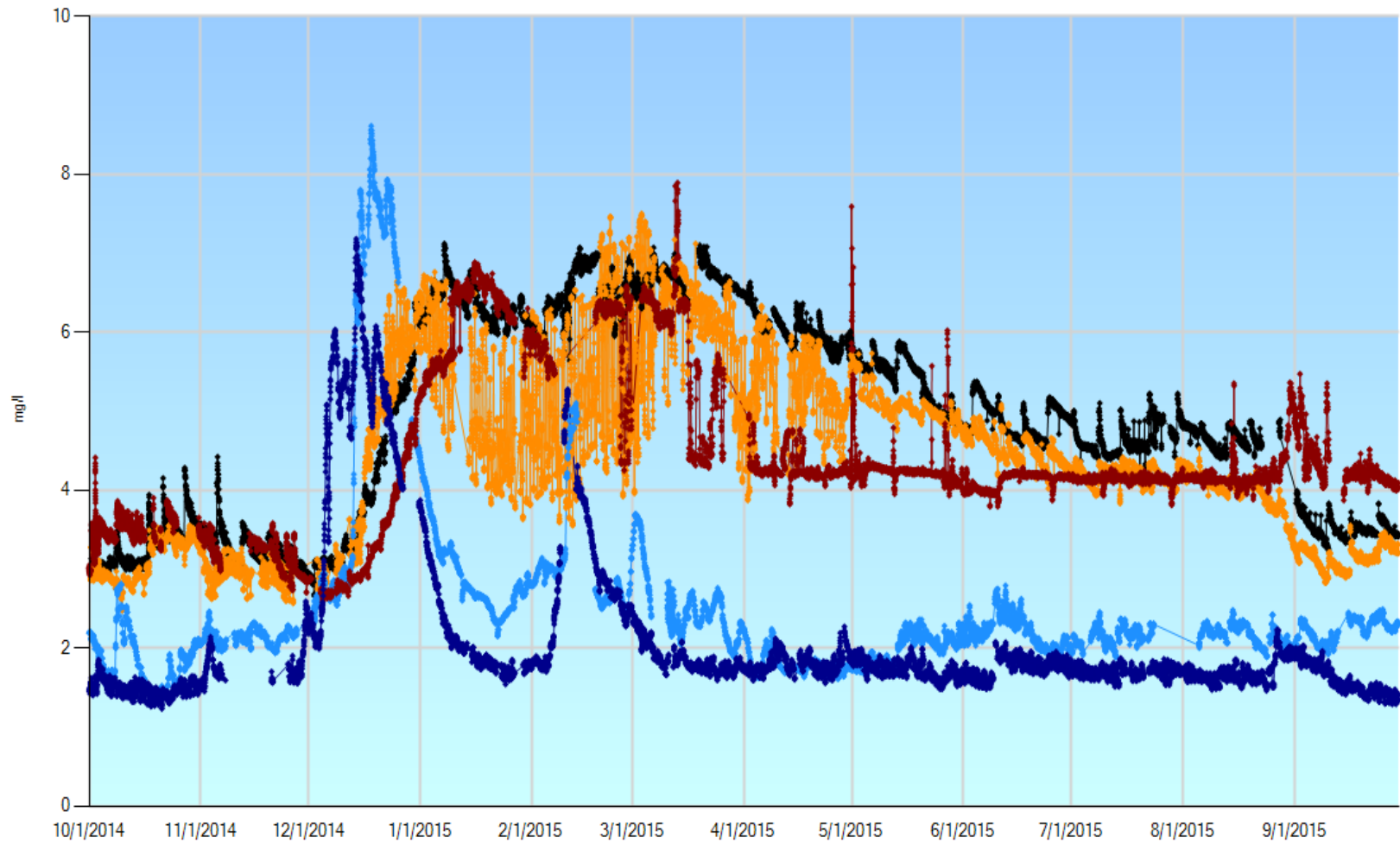


HBP - Harvey Banks Pumping Plant-Electrical Conductivity (WS) DMC - DMC Headworks-Electrical Conductivity ONG - O'Neill Forebay at Gianelli Pumping Plant-Electrical Conductivity SRH - Sacramento River at Hood-Electrical Conductivity (WS) CLC - Clifton Court-Electrical Conductivity (WS)
San Joaquin R Mccune Station Nr Vernalis El Cond

Water Year 2014 - 2015 Bromide

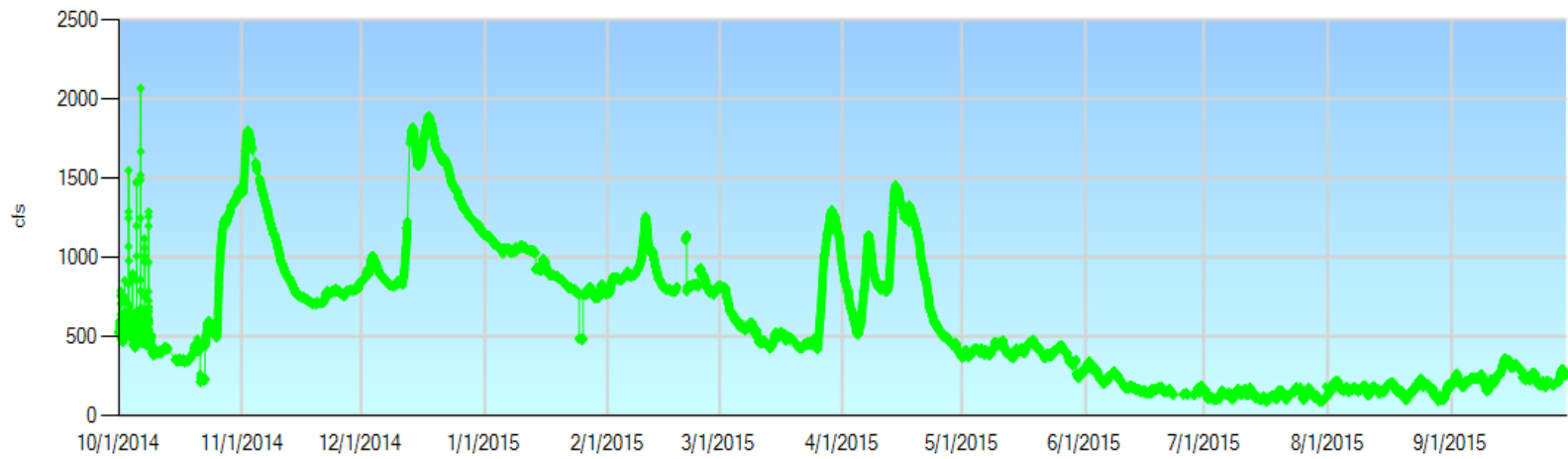
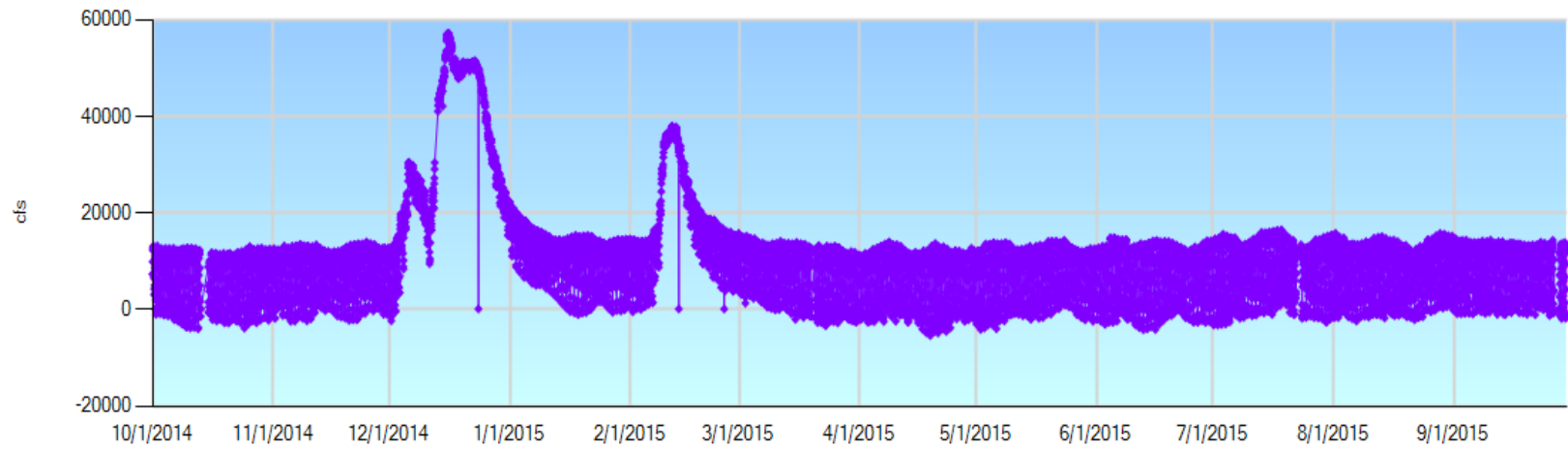


Water Year 2014 - 2015 DOC



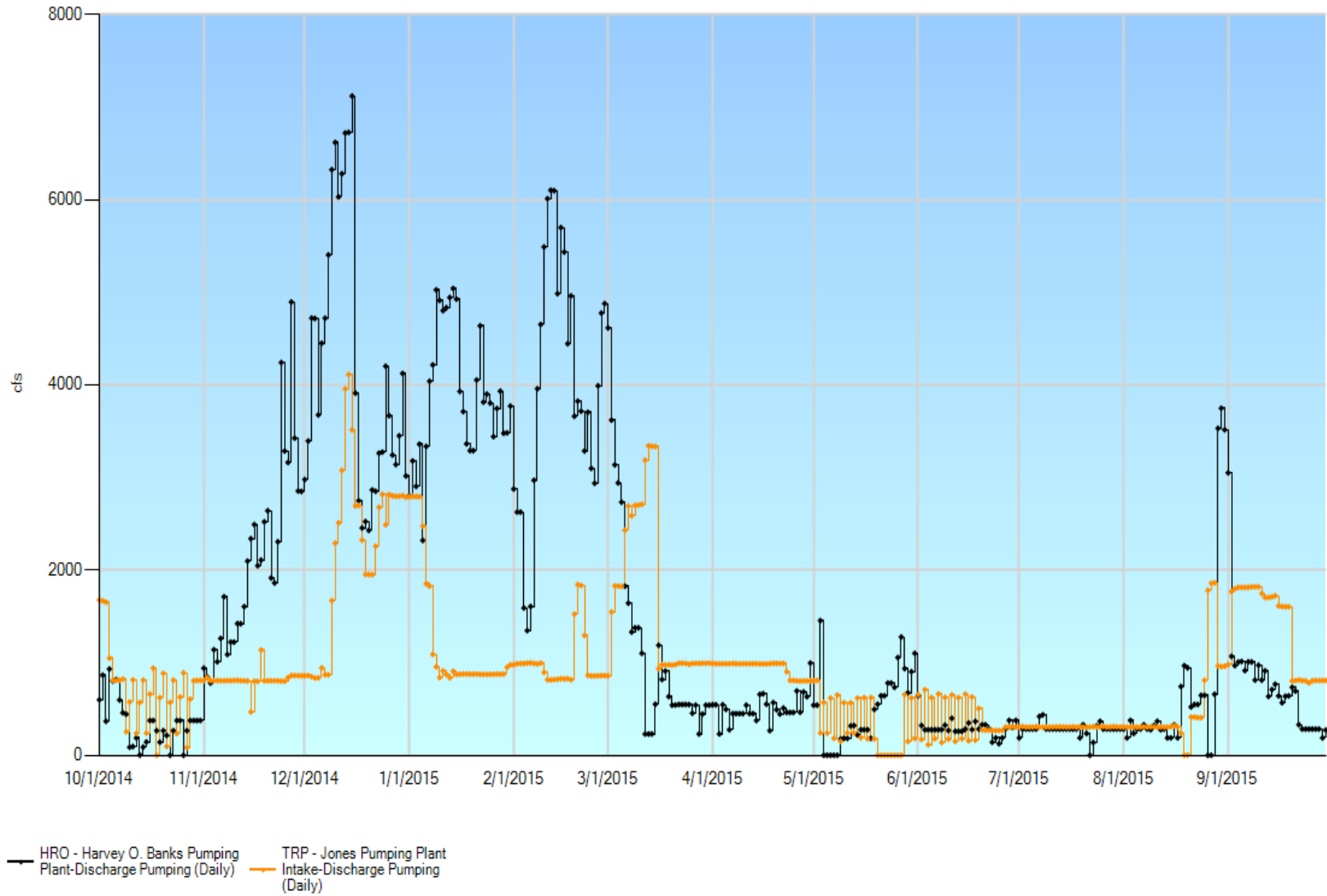
— HRO - Harvey O. Banks Pumping Plant-Sievers DOC — TRP - Jones Pumping Plant Intake-Sievers DOC — SJR - San Joaquin River at Vernalis-Sievers DOC — ONG - O'Neill Forebay at Gianelli Pumping Plant-Sievers DOC — SRH - Sacramento River at Hood-Sievers DOC

Water Year 2014 - 2015 SR, SJR Flows

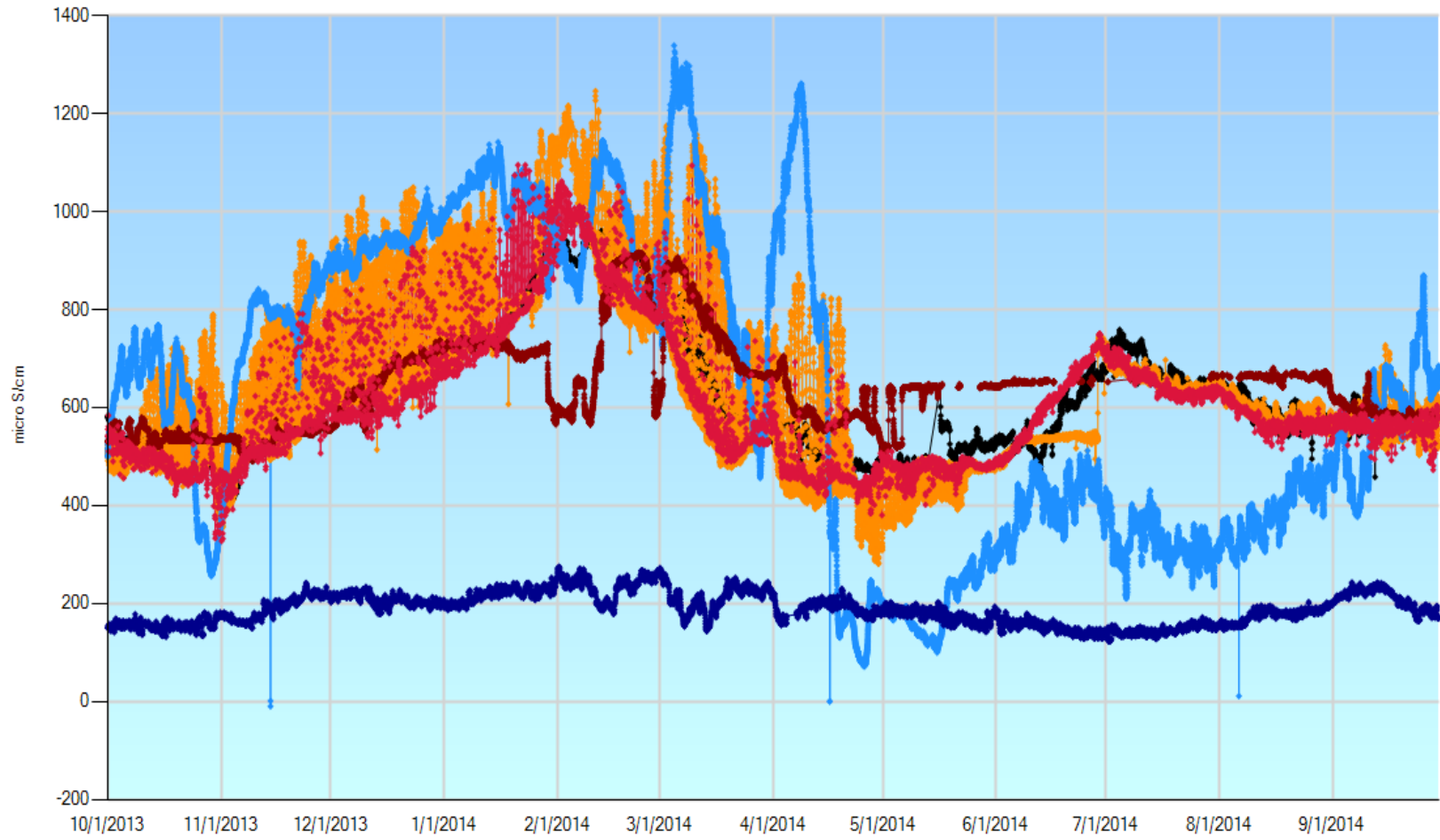


FPT - Sacramento River at Freeport-Flow, River Discharge VNS - San Joaquin River near Vernalis-Flow, River Discharge

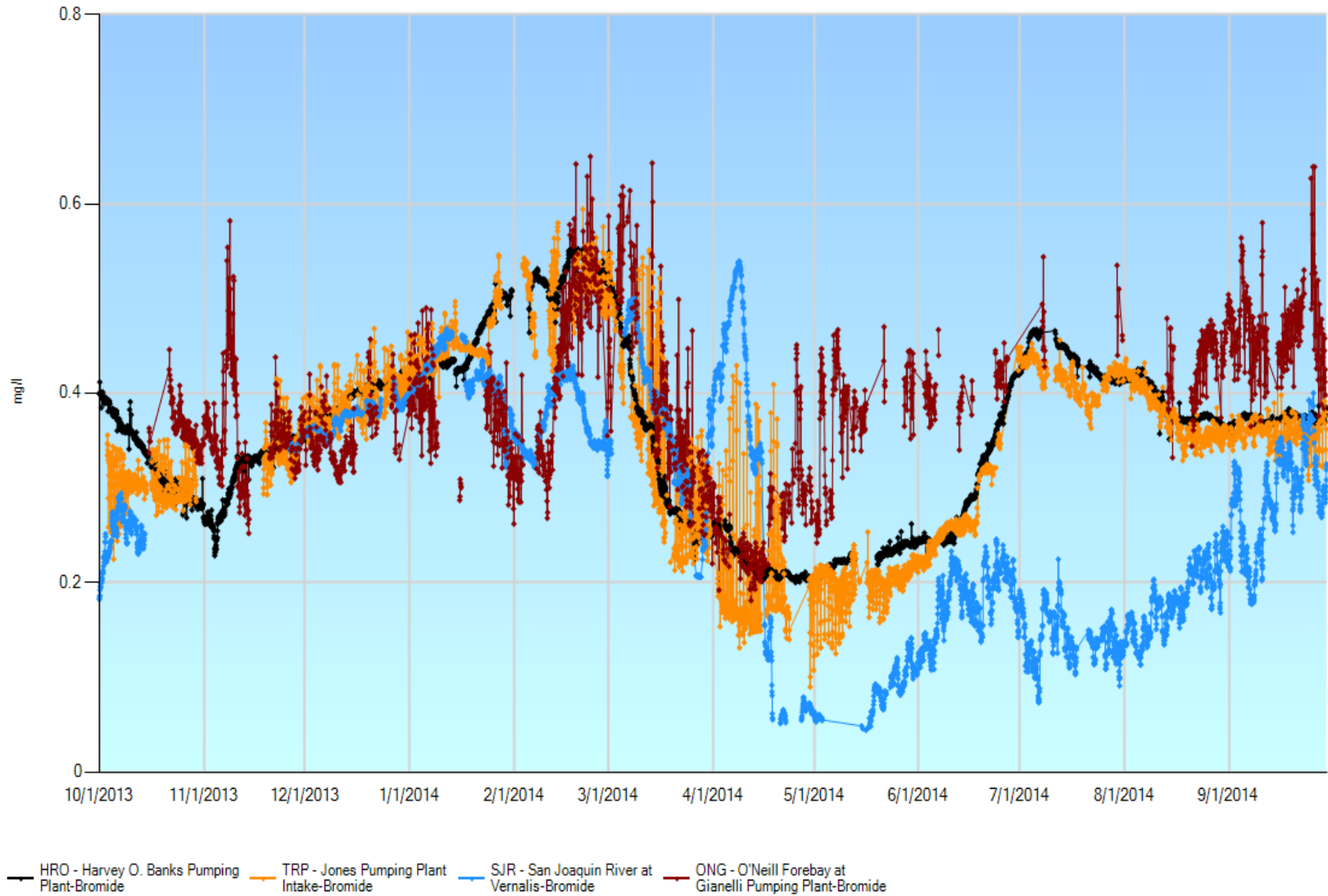
Water Year 2014 - 2015 Export Pumping



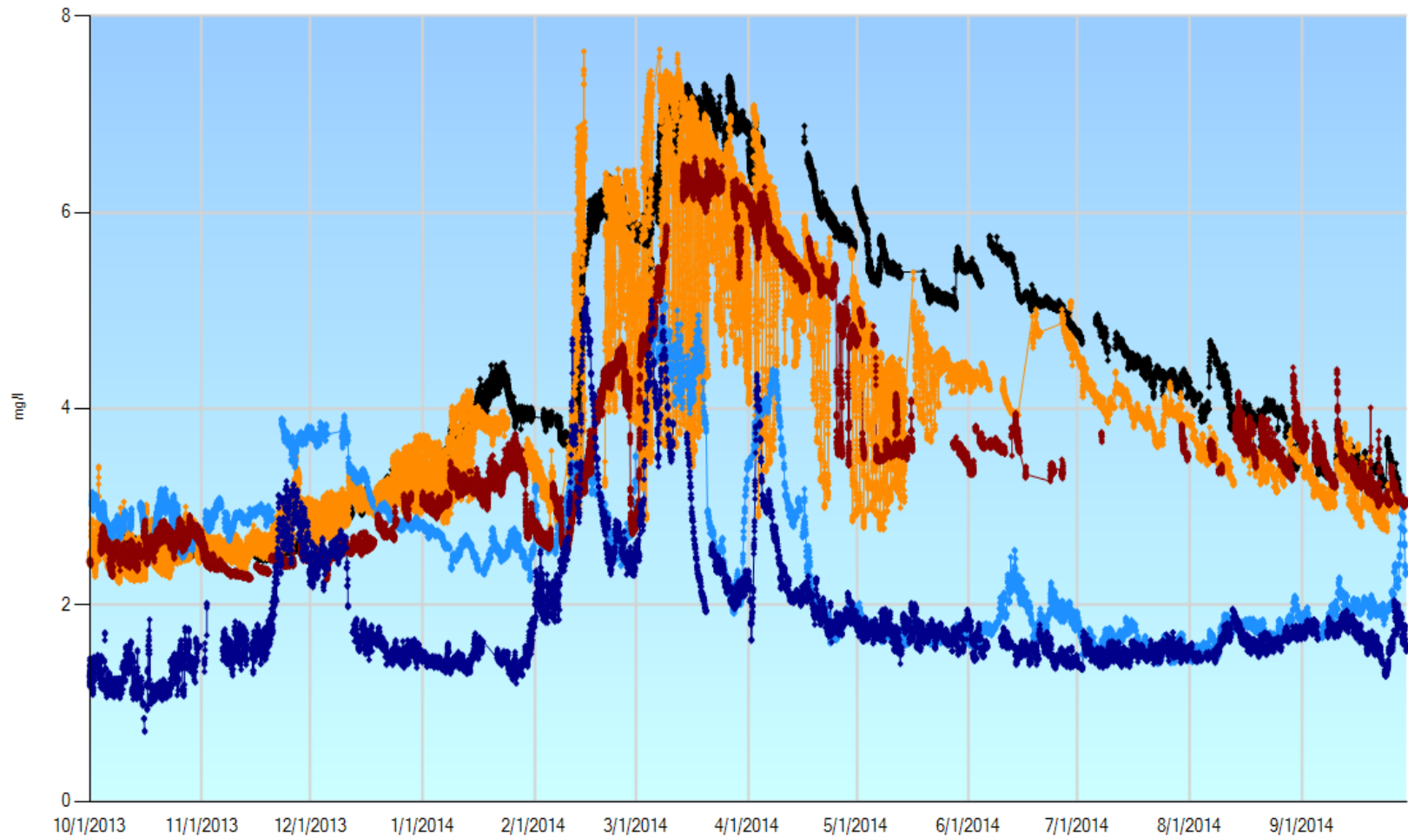
Water Year 2013 - 2014 EC



Water Tear 2013 - 2014 Bromide

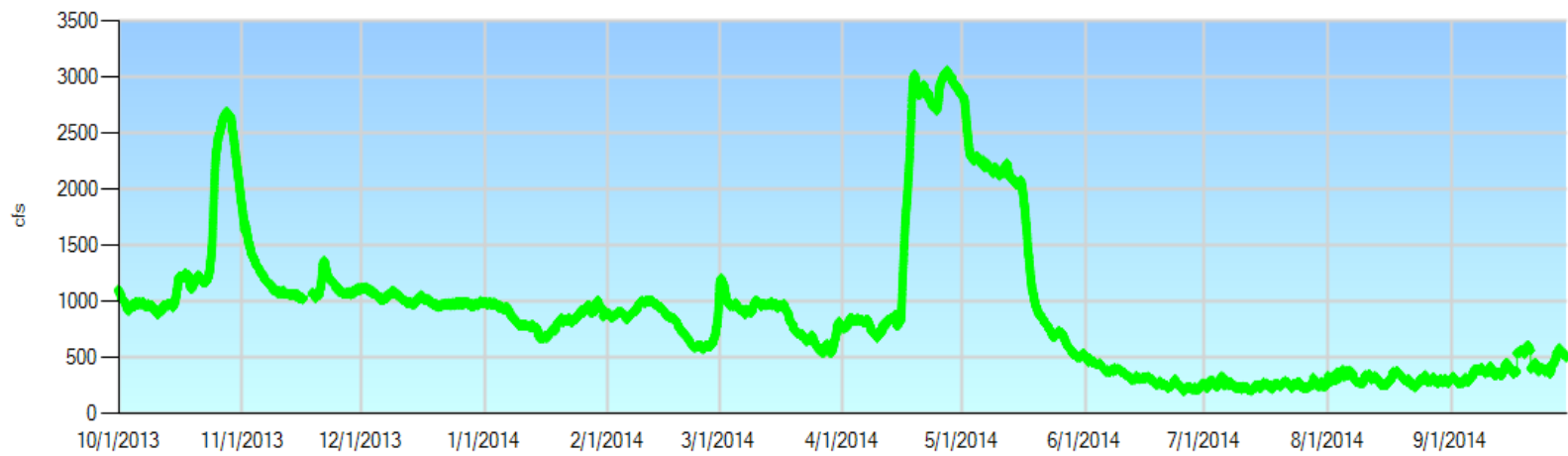
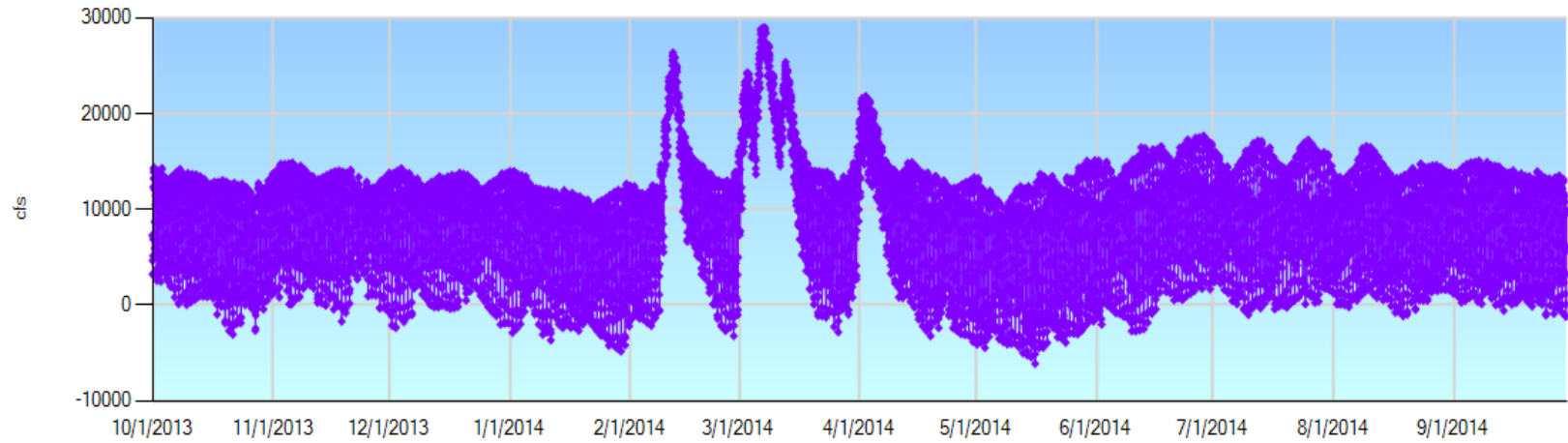


Water Year 2013 - 2014 DOC



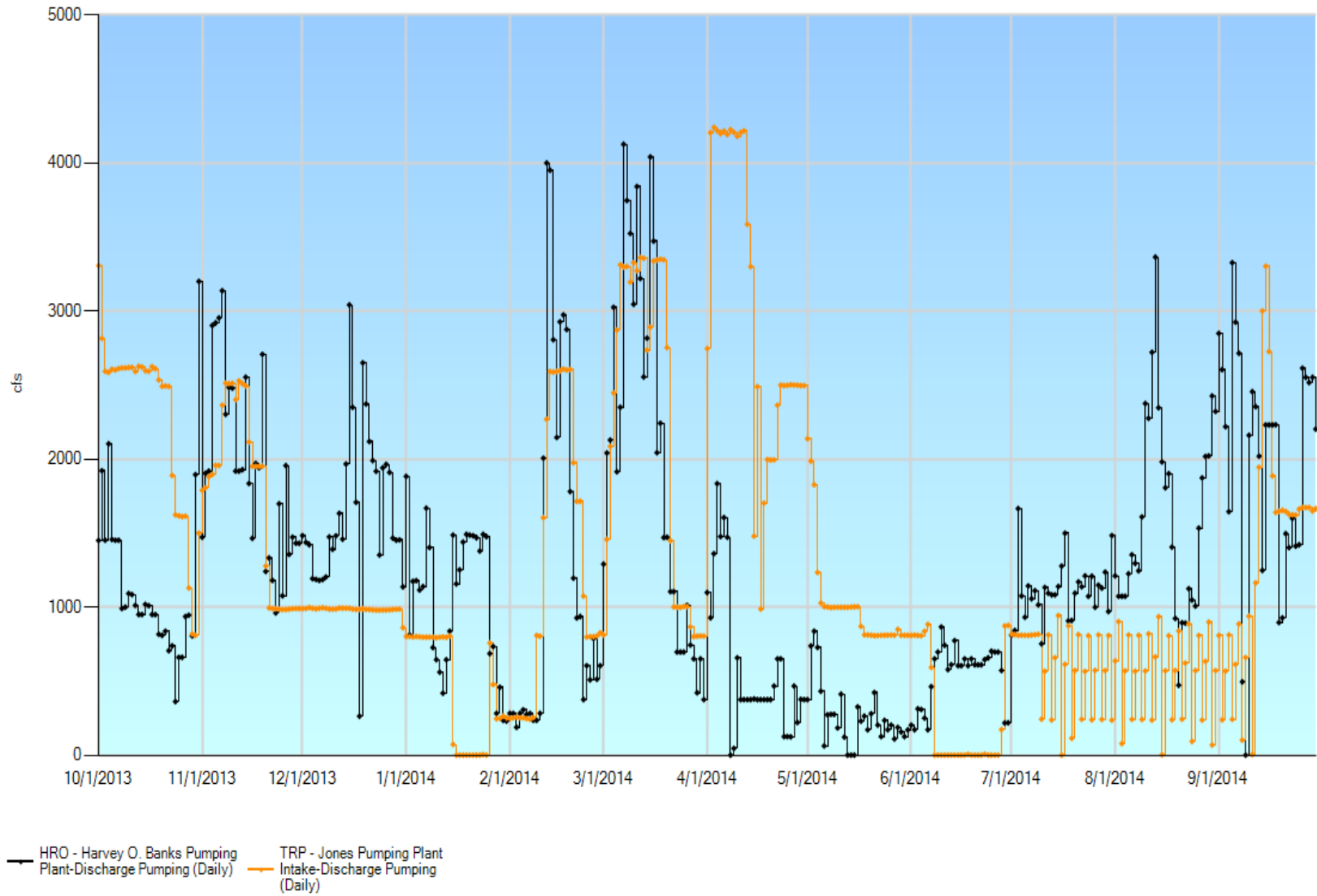
— HRO - Harvey O. Banks Pumping Plant-Sievers DOC — TRP - Jones Pumping Plant Intake-Sievers DOC — SJR - San Joaquin River at Vernalis-Sievers DOC — ONG - O'Neill Forebay at Gianelli Pumping Plant-Sievers DOC — SRH - Sacramento River at Hood-Sievers DOC

Water Year 2013 - 2014 SR, SJR Flows

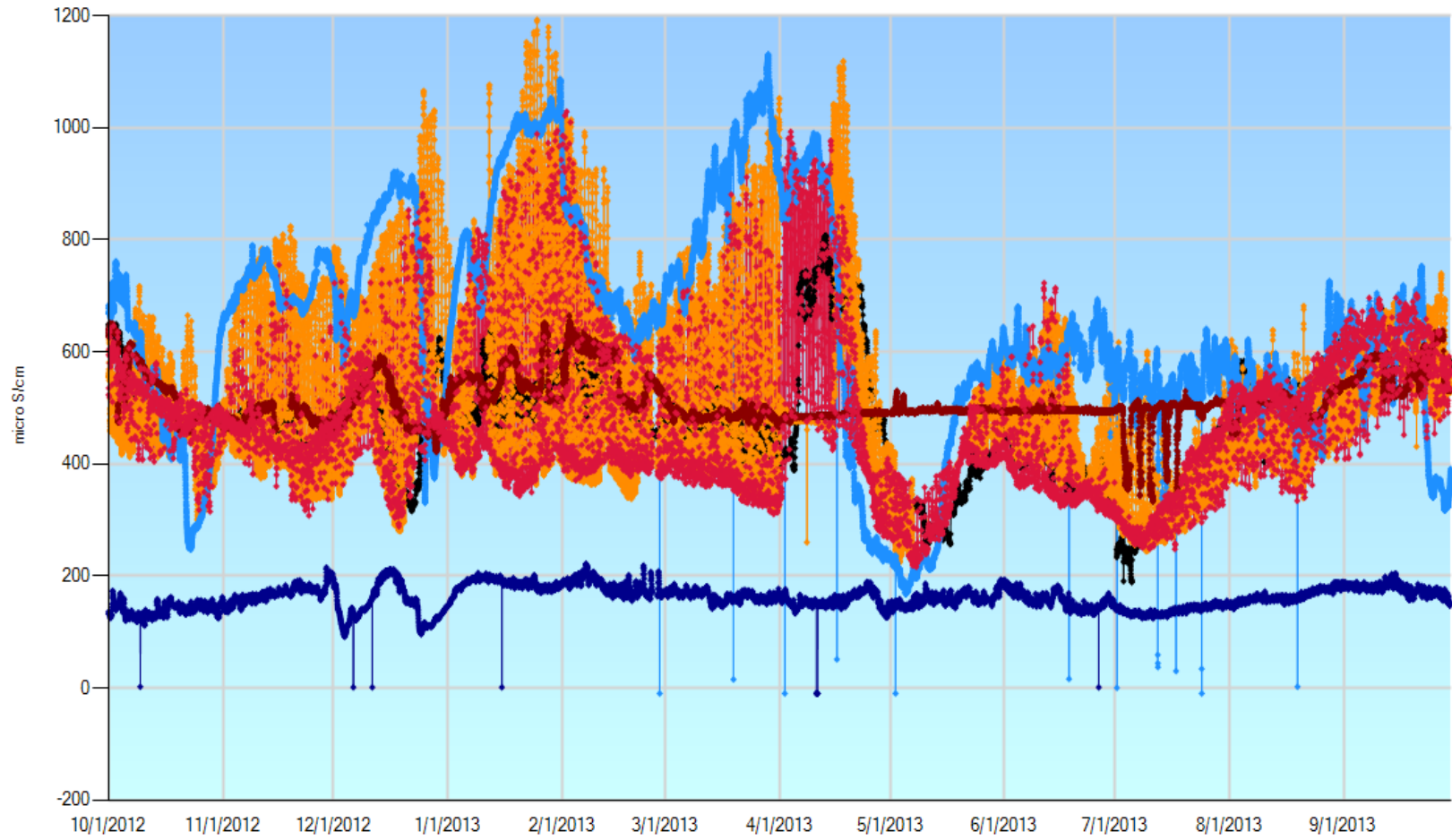


FPT - Sacramento River at Freeport-Flow, River Discharge
VNS - San Joaquin River near Vernalis-Flow, River Discharge

Water Year 2013 - 2014 Export Pumping

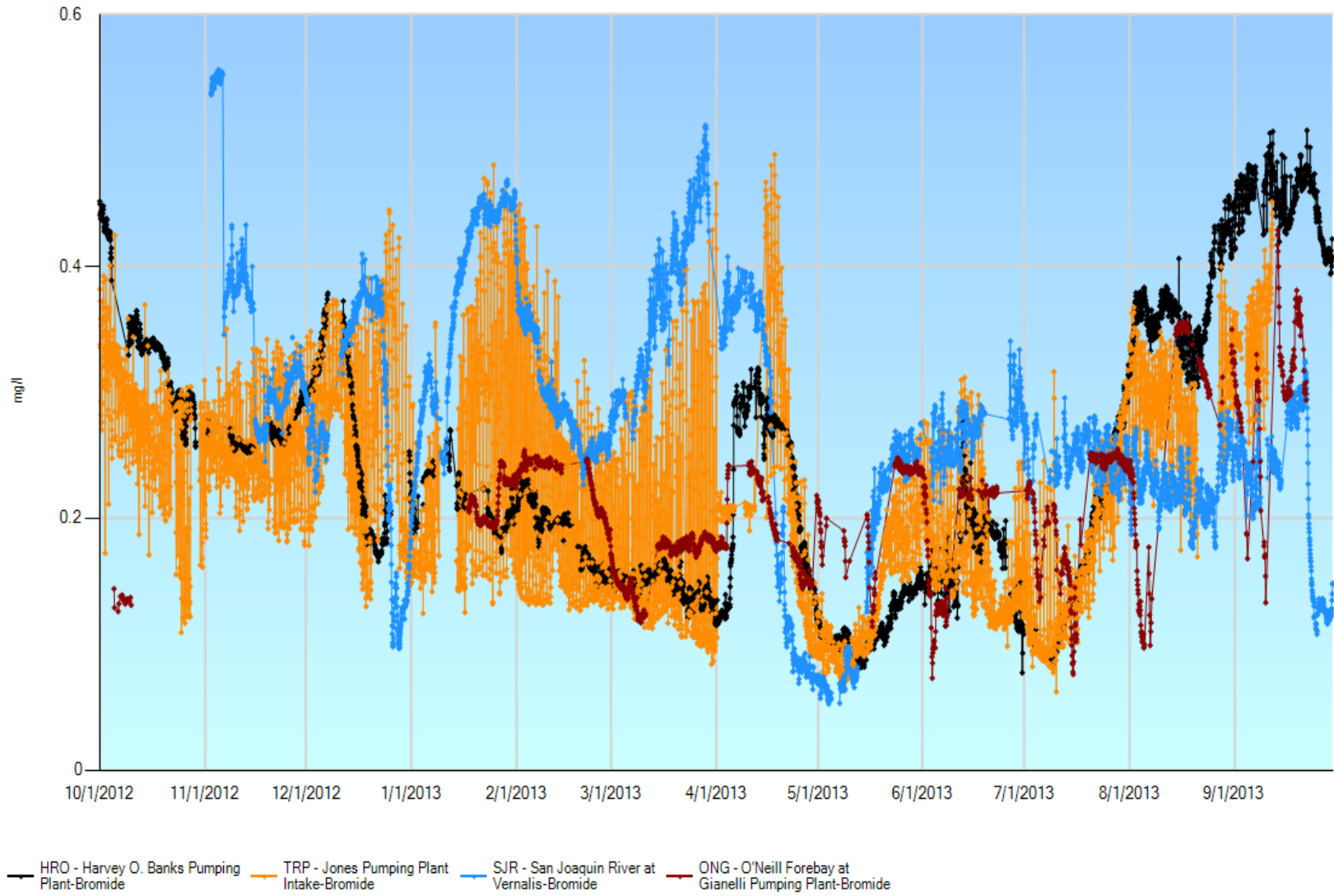


Water Year 2012 - 2013 EC

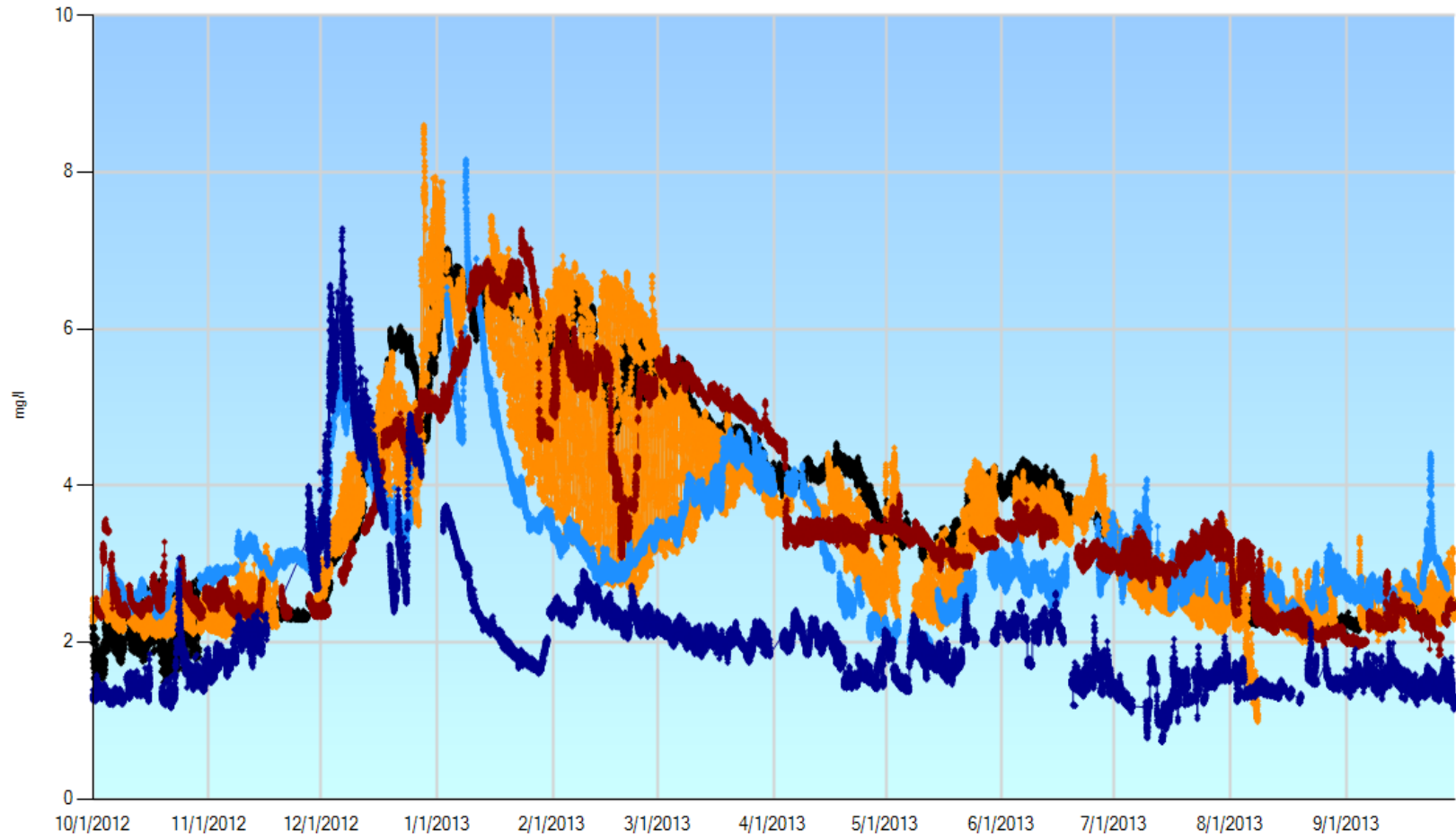


HBP - Harvey Banks Pumping Plant-Electrical Conductivity (WS) DMC - DMC Headworks-Electrical Conductivity ONG - O'Neill Forebay at Gianelli Pumping Plant-Electrical Conductivity SRH - Sacramento River at Hood-Electrical Conductivity (WS) CLC - Clifton Court-Electrical Conductivity (WS)
San Joaquin R Mccone Station Nr Vernalis El Cond

Water Year 2012 -2013 Bromide

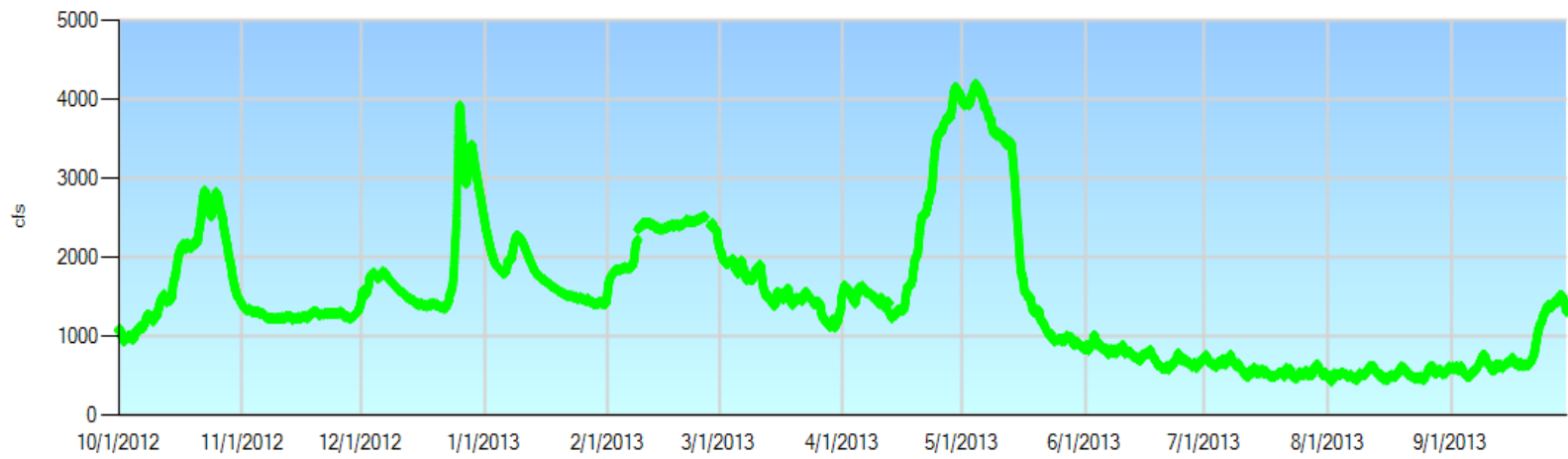
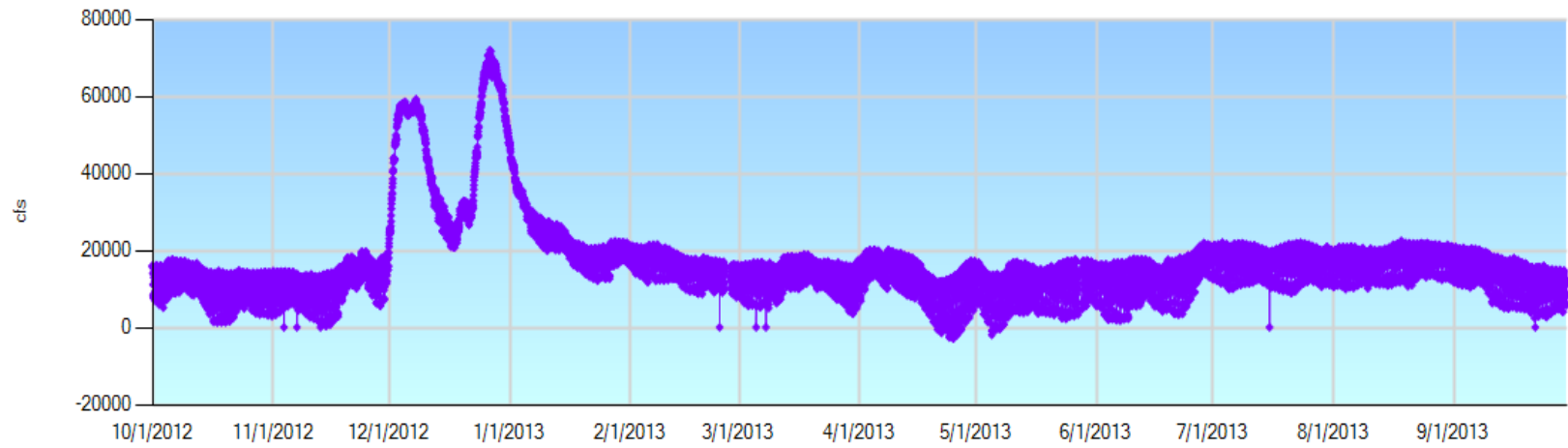


Water Year 2012 - 2013 DOC



— HRO - Harvey O. Banks Pumping Plant-Sievers DOC — TRP - Jones Pumping Plant Intake-Sievers DOC — SJR - San Joaquin River at Vernalis-Sievers DOC — ONG - O'Neill Forebay at Gianelli Pumping Plant-Sievers DOC — SRH - Sacramento River at Hood-Sievers DOC
— HRO - Harvey O. Banks Pumping Plant-Shimadzu DOC

Water Year 2012 - 2013 SR, SJR Flows



FPT - Sacramento River at Freeport-Flow, River Discharge VNS - San Joaquin River near Vernalis-Flow, River Discharge

Water Year 2012 - 2013 Export Pumping

