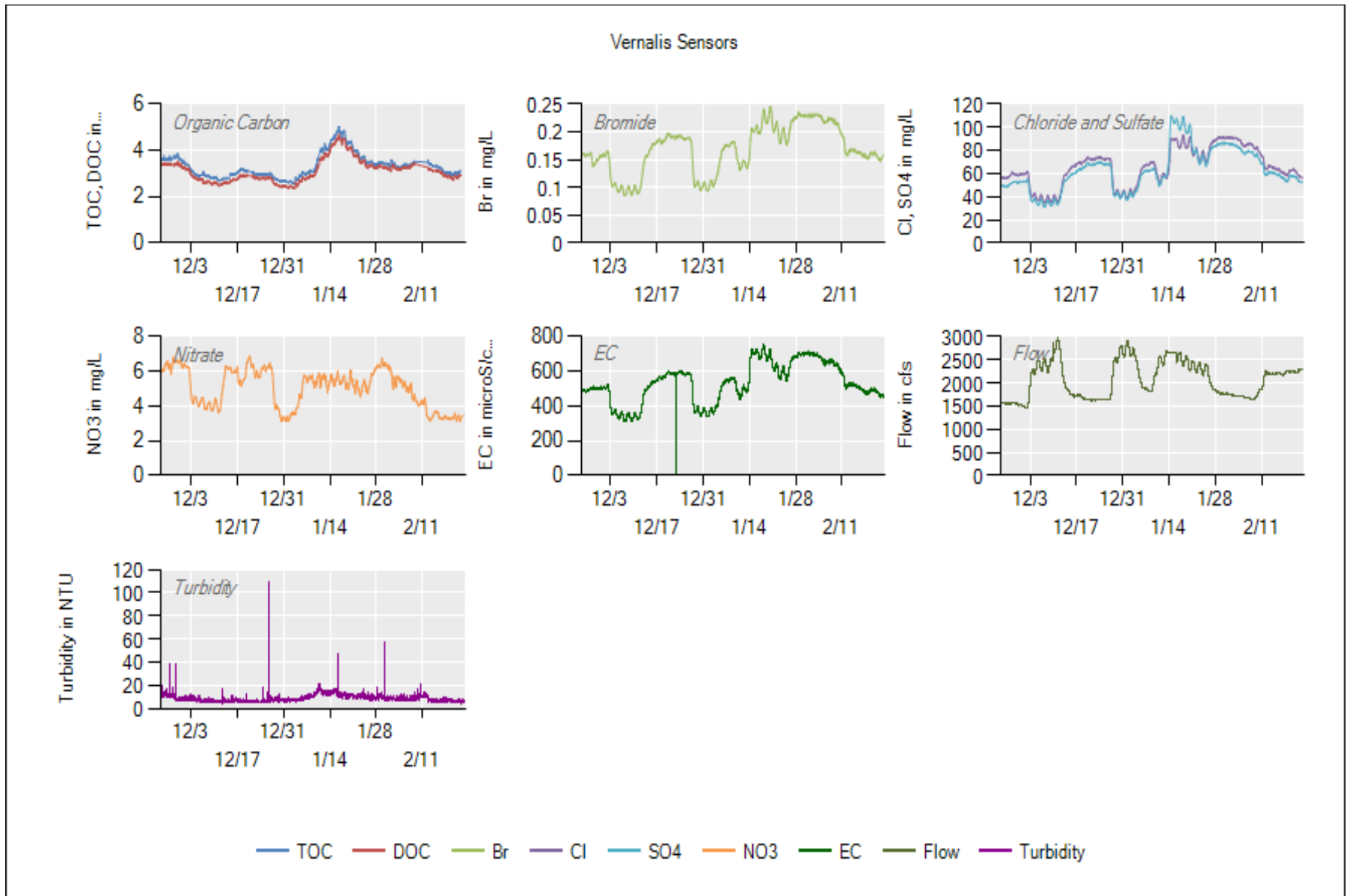
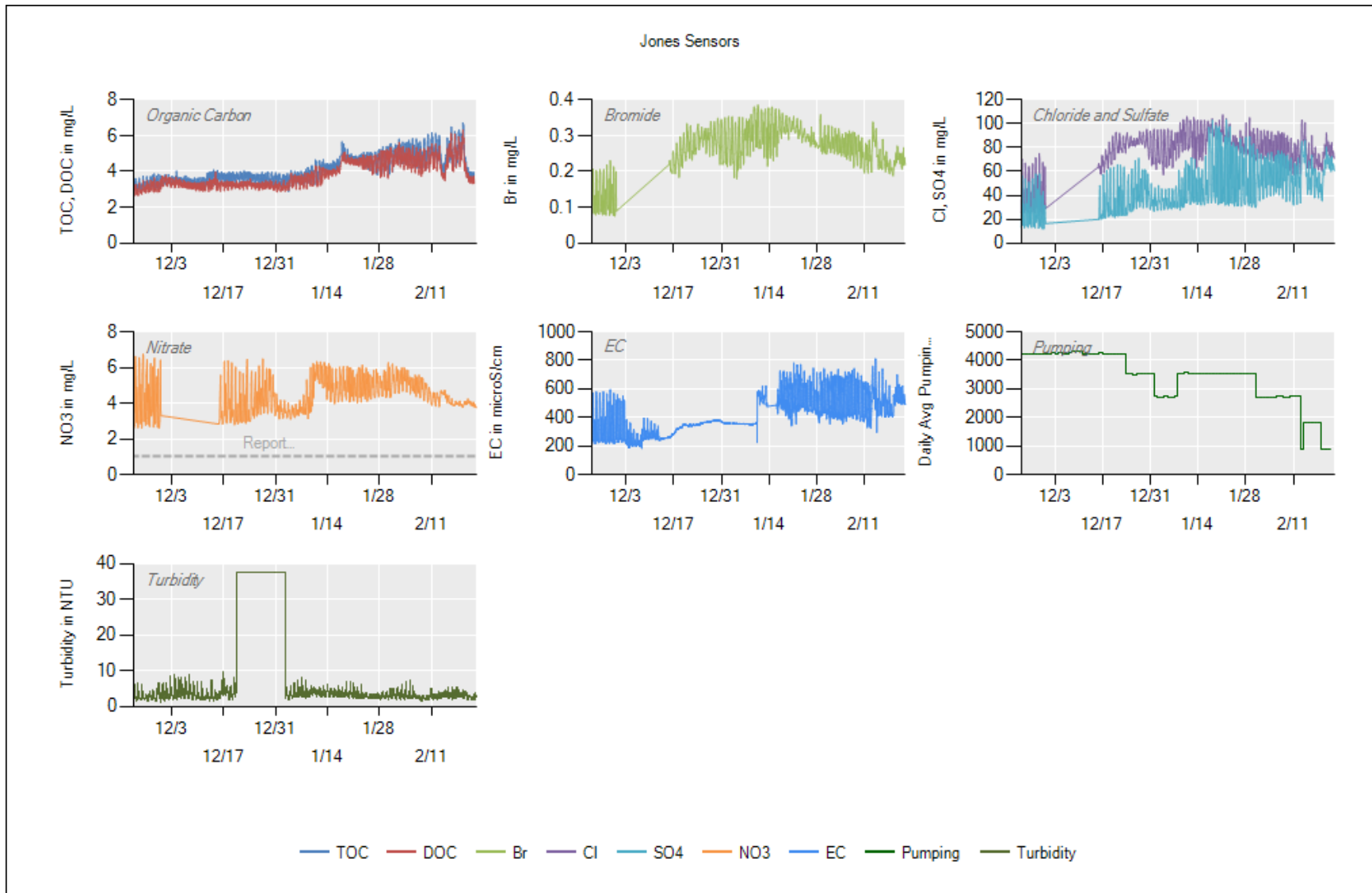


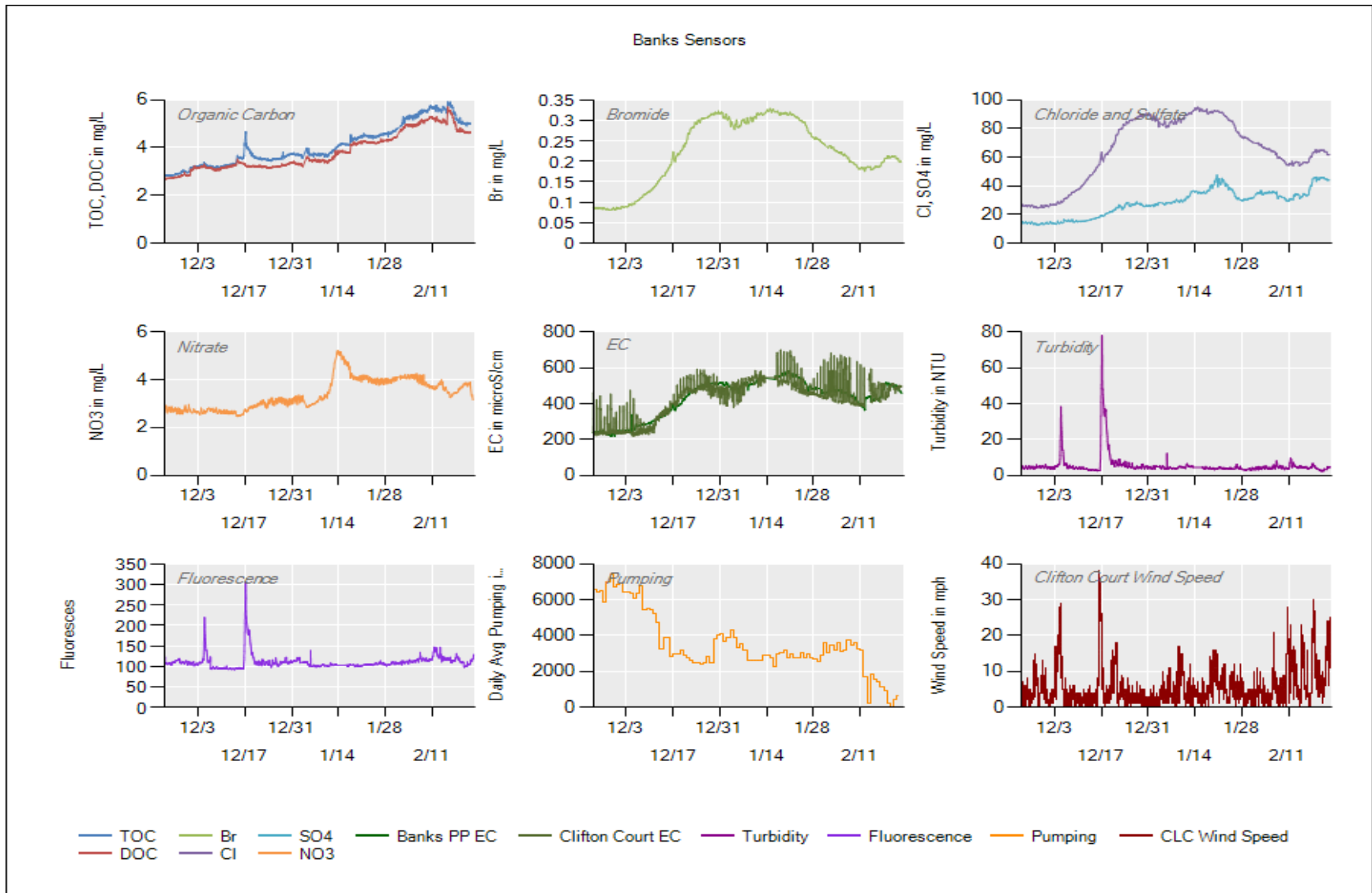
11/30/17: Sample delivery system filter change – **1/4/18:** Sample delivery system filter change – **1/17/18:** Sample delivery system partial filter change, 1 and 0.45 um filters only – **2/13/18:** Sample delivery system filter change



2/8 – 2/12 = Loss of organic carbon data caused by a bad solenoid valve. 2/22 = Sievers organic carbon analyzer removed for annual service.

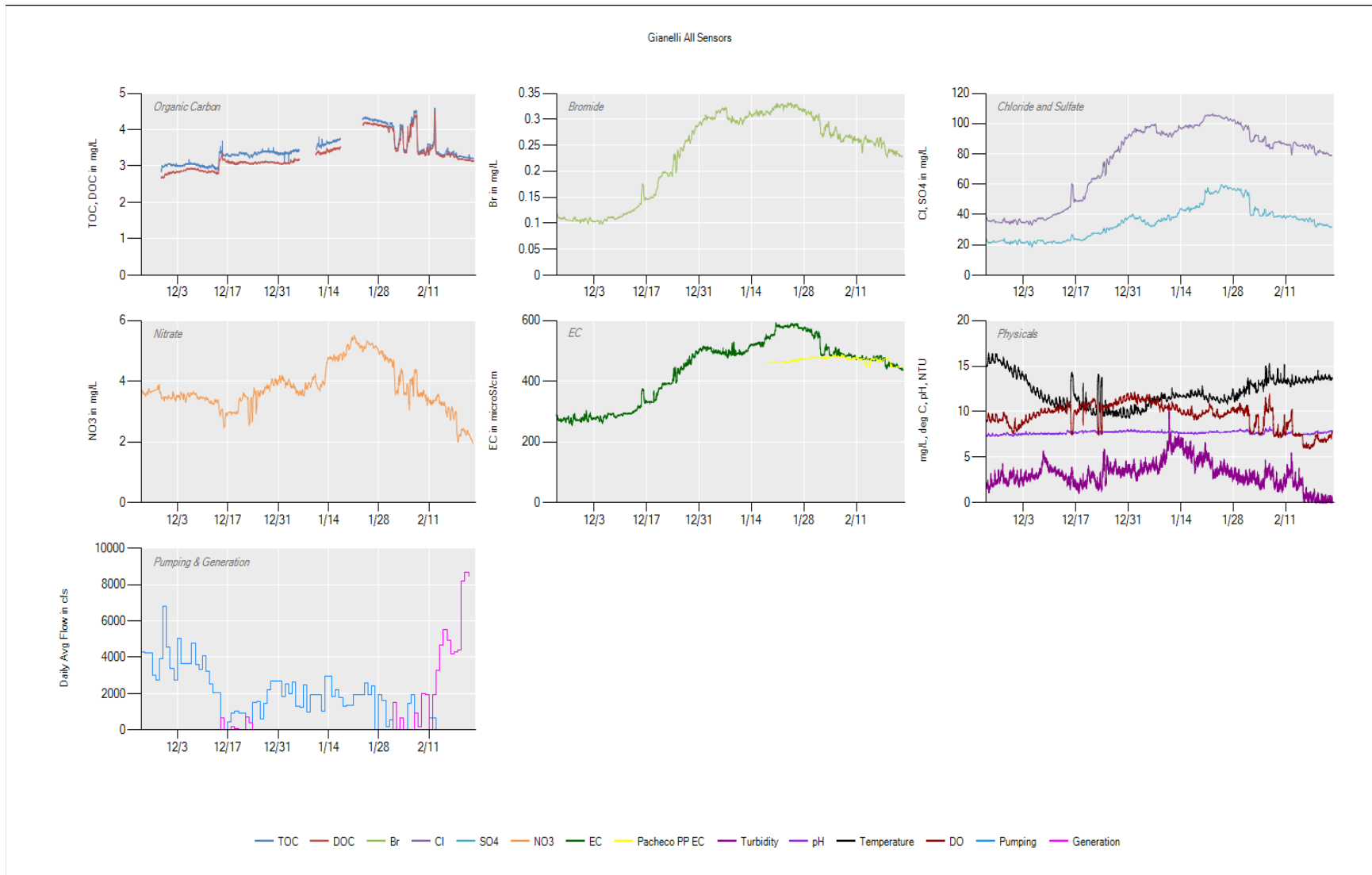


Both instruments have been operational and reporting since last month. Pumping has decreased to approximately 1000 cfs in anticipation of lower outflow conditions. If lower pumping continues, expect to see less tidal variability.



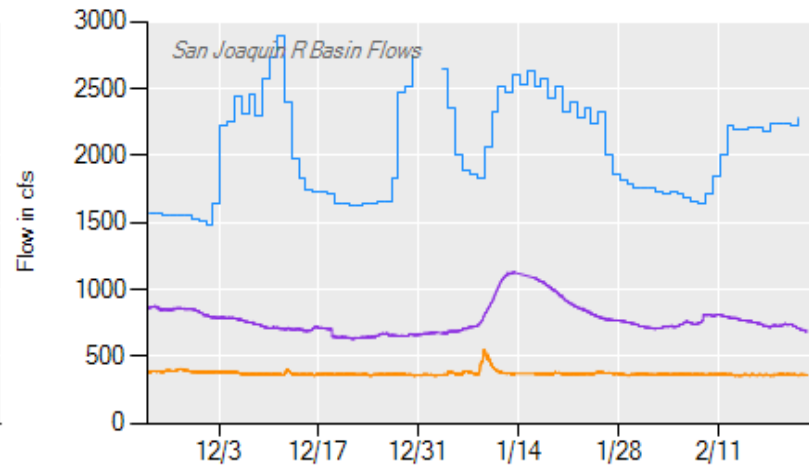
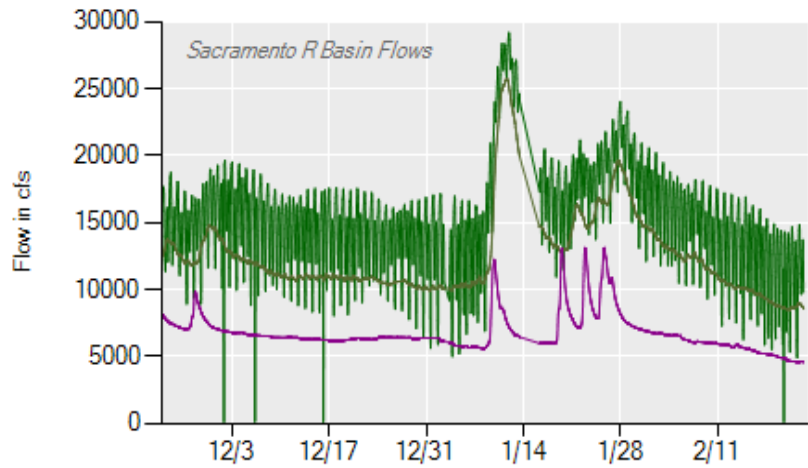
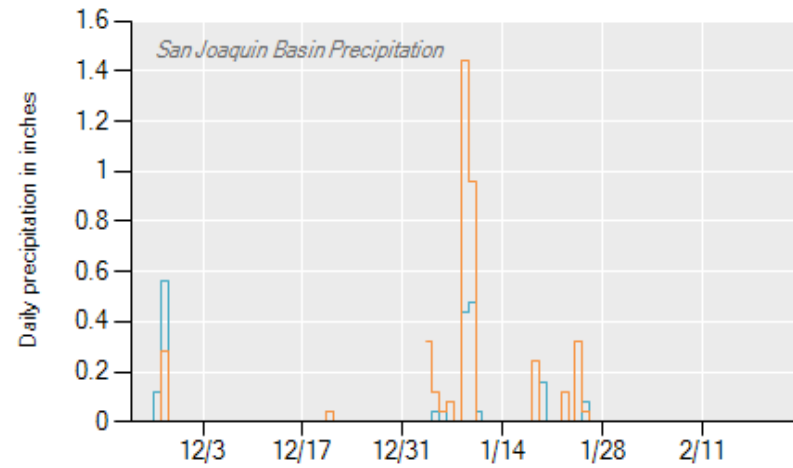
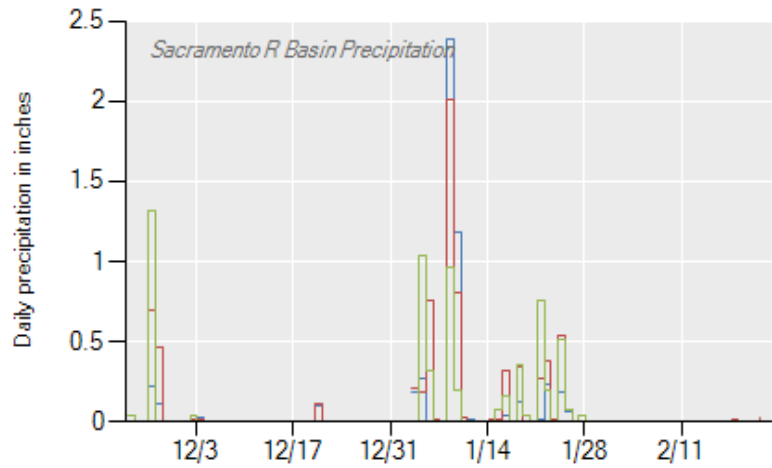
Significant Events: Nov 23th, 2017 to Feb 23th, 2018

- **Routine RTMQC 12/14 & 1/17 & 2/15:** The station has been operational and reporting. No major issues or changes.

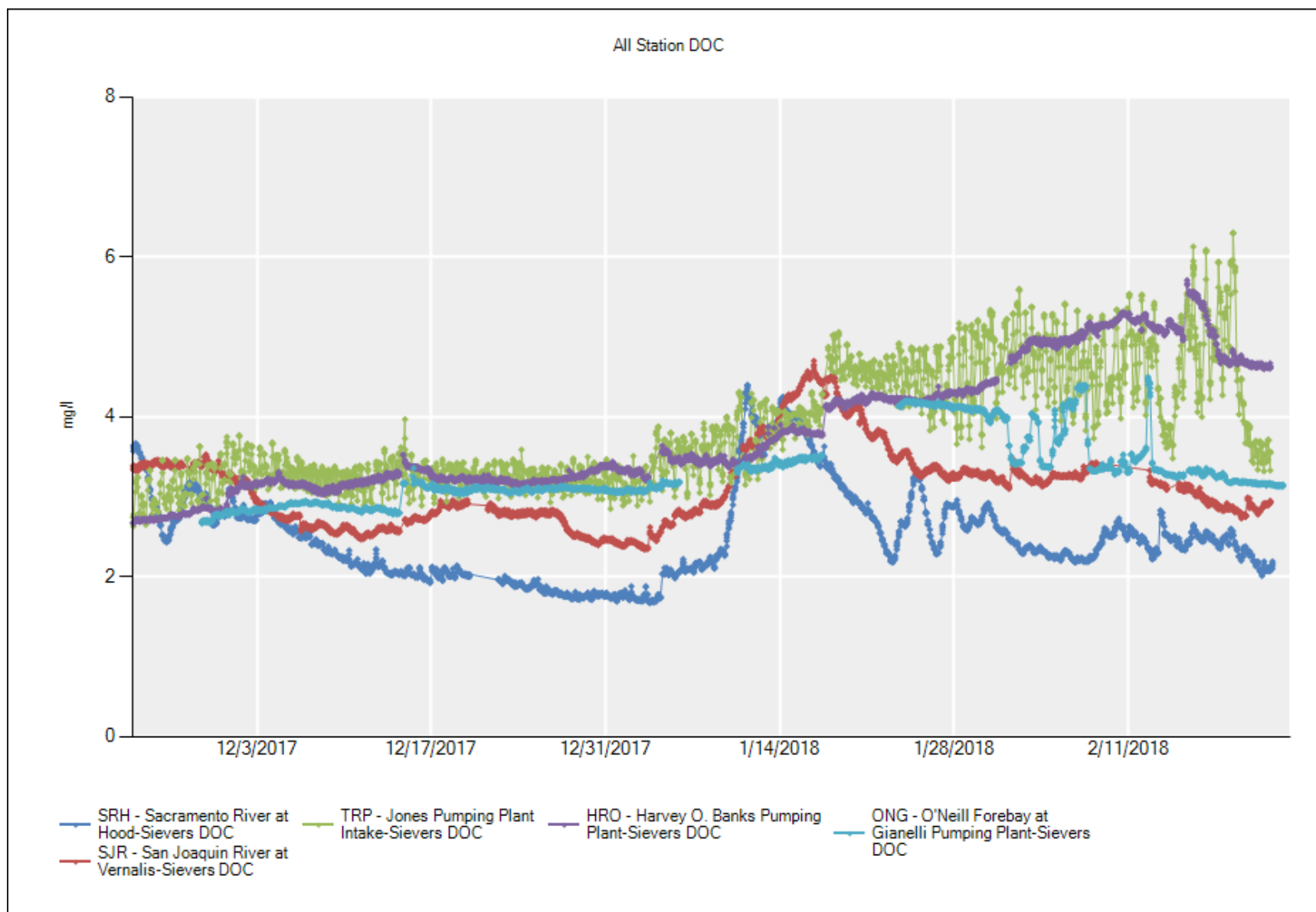


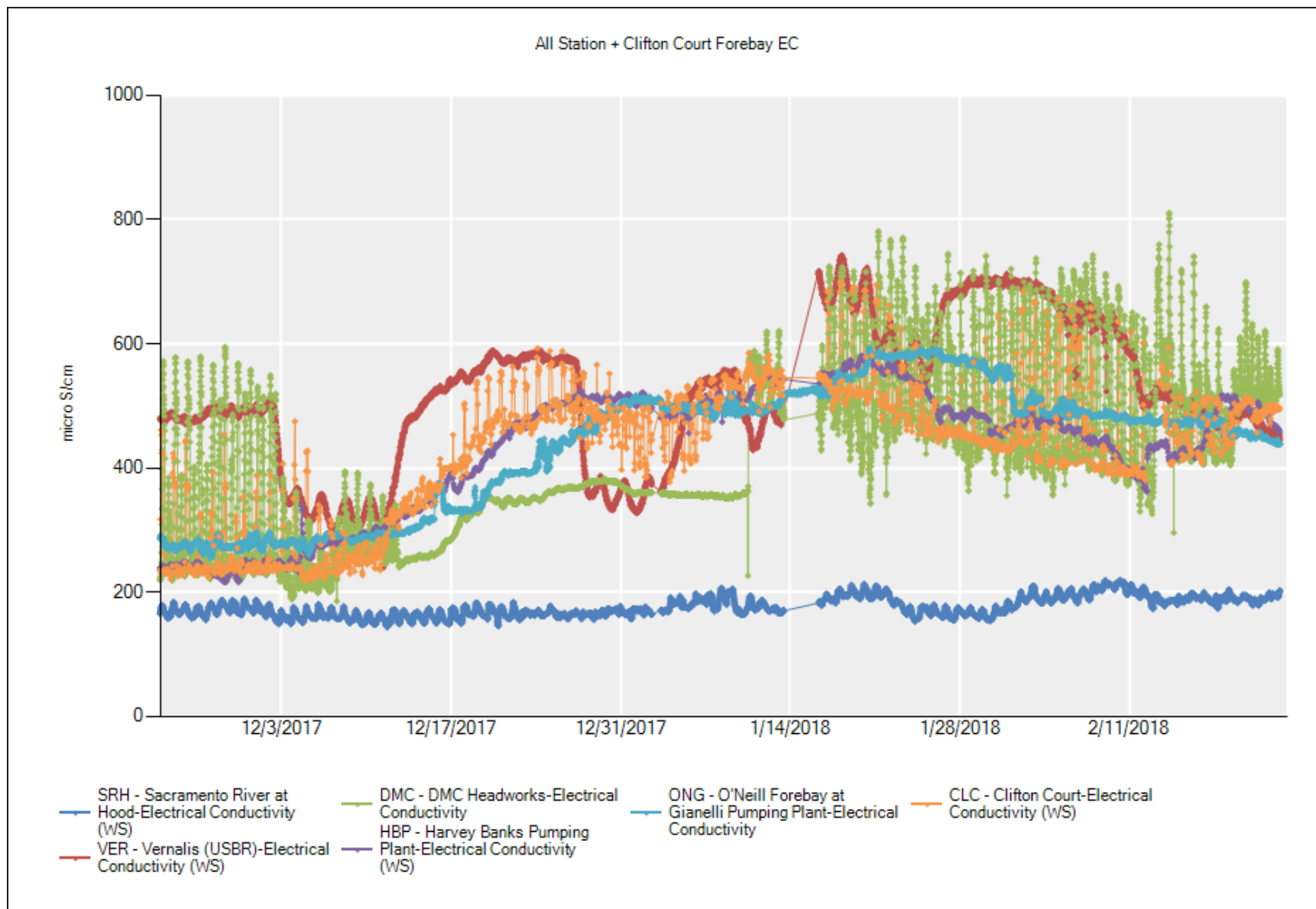
11/1 to 11/6 – The Dionex internal pump lost prime and caused it to shut down. All connections were tightened and no further losses in pressure or prime have been seen since. 11/16 to 11/28 – The Sievers stopped operating, likely because of a brief power outage. This occurred over the week of Thanksgiving which prolonged the time before the issue could be fixed. No similar issues have arisen since. 1/17 to 1/23 – The solenoid valves controlling Sievers flow got stuck and caused TOC and DOC samples to mix.

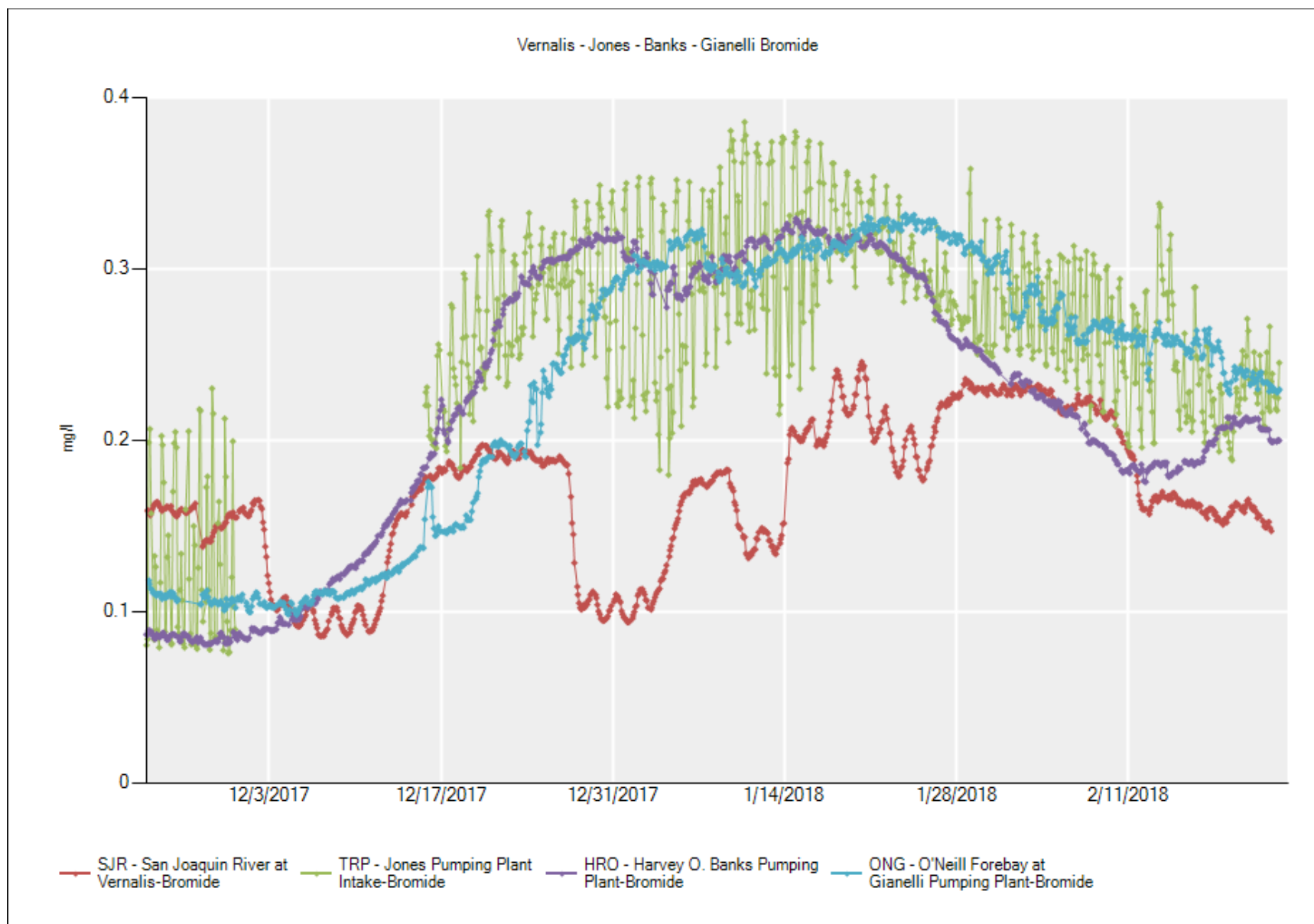
Basin Precipitations and Flows

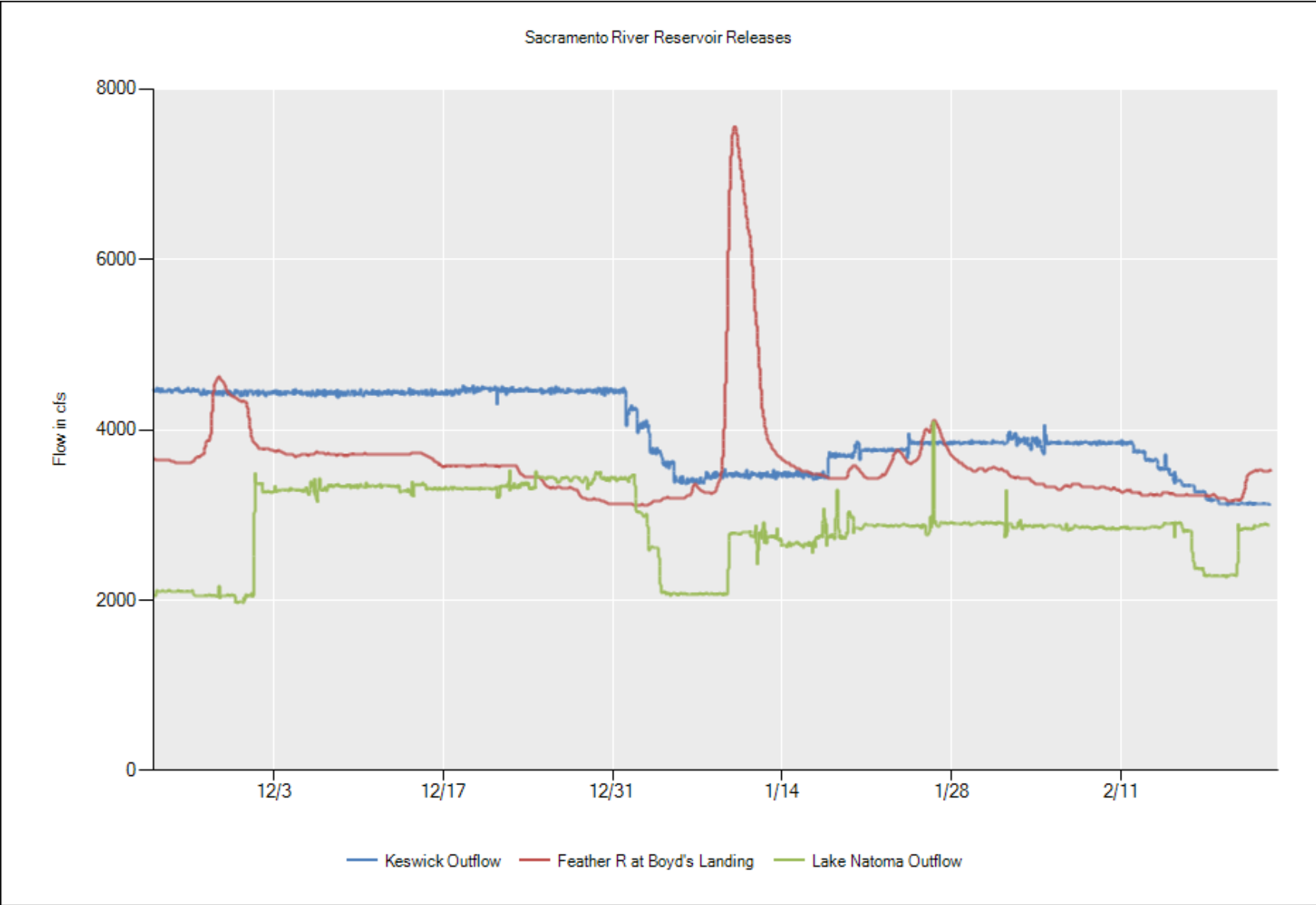


- CSU Sacramento
- Oroville Dam
- Redding Fire Station
- Exchequer Dam, Merced R.
- Friant Dam
- Stockton Fire Station
- Sac R at Freeport
- Sac R at Verona
- Sac R at Vina-Woodson Br
- SJR at Crows Landing
- Tuolumne R at Modesto
- Stanislaus R at Ripon
- SJR R at Vernalis

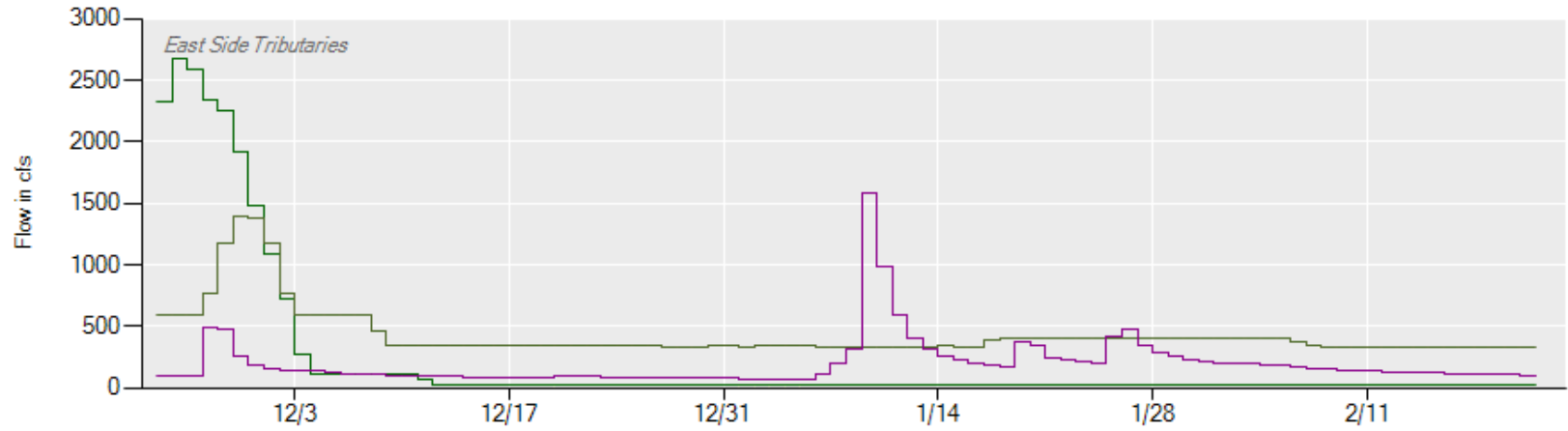
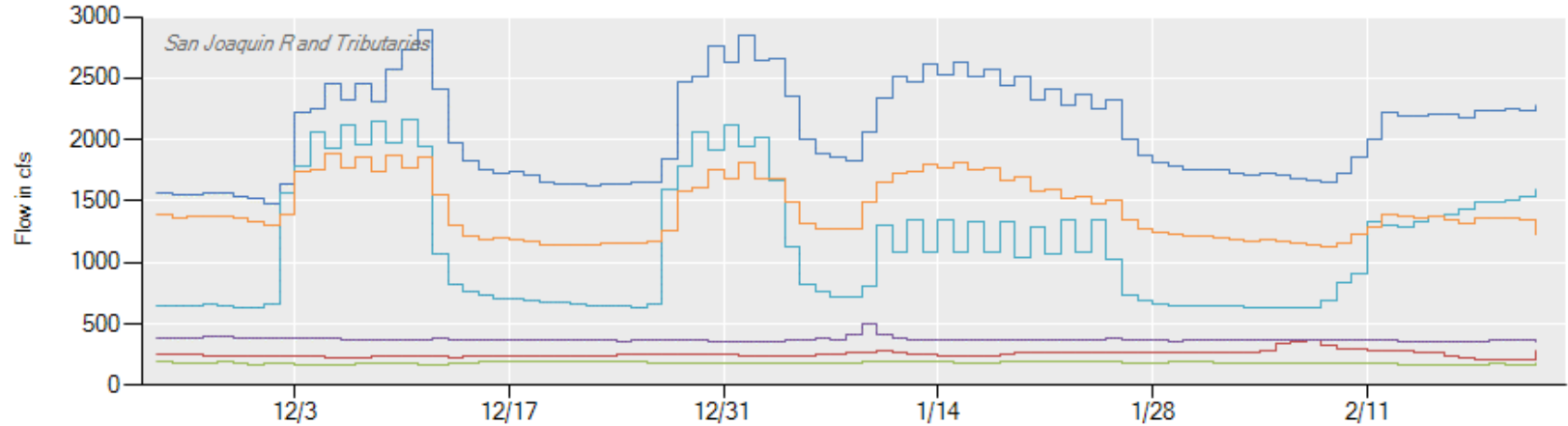








San Joaquin River Reservoir Releases/Tributary Flows



- Vernalis
- Merced R at Stevinson
- Stanislaus R at Ripon
- Calaveras R blw New Hogan
- Cosumnes R at Michigan Bar
- Gravelly Ford
- Tuolumne R at Modesto
- San Joaquin at Maze Rd
- Mokelumne R at Clements