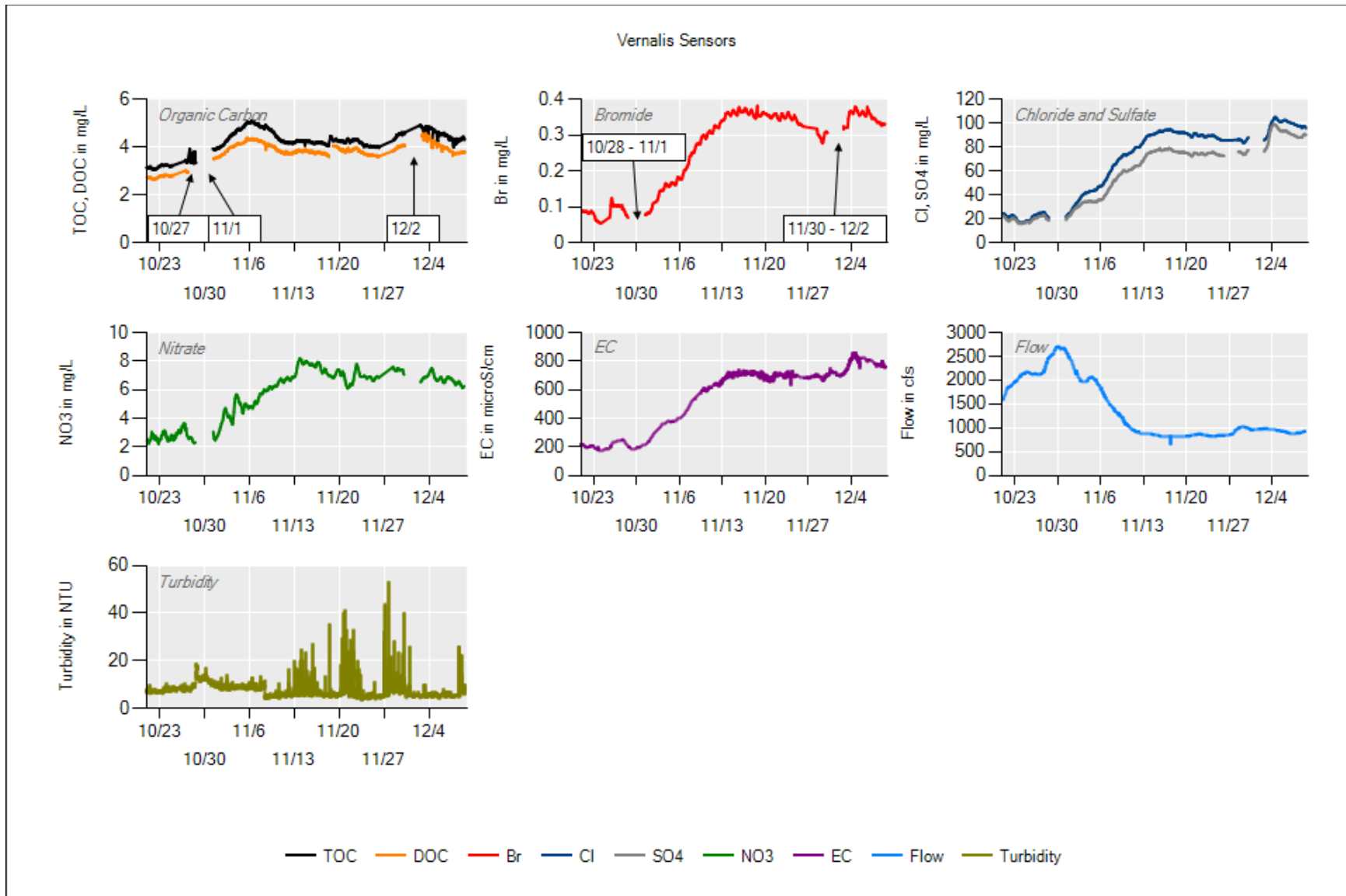
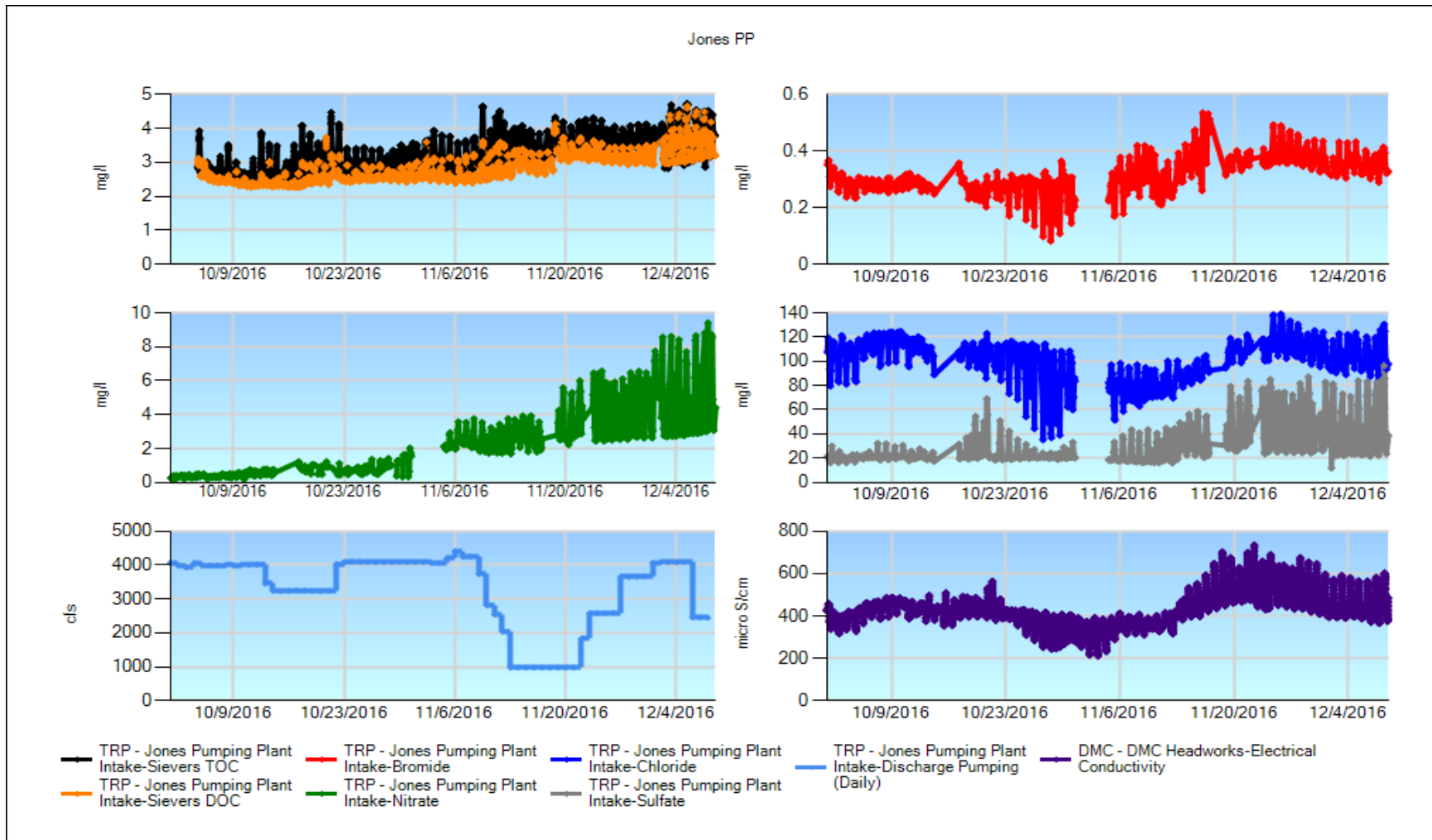


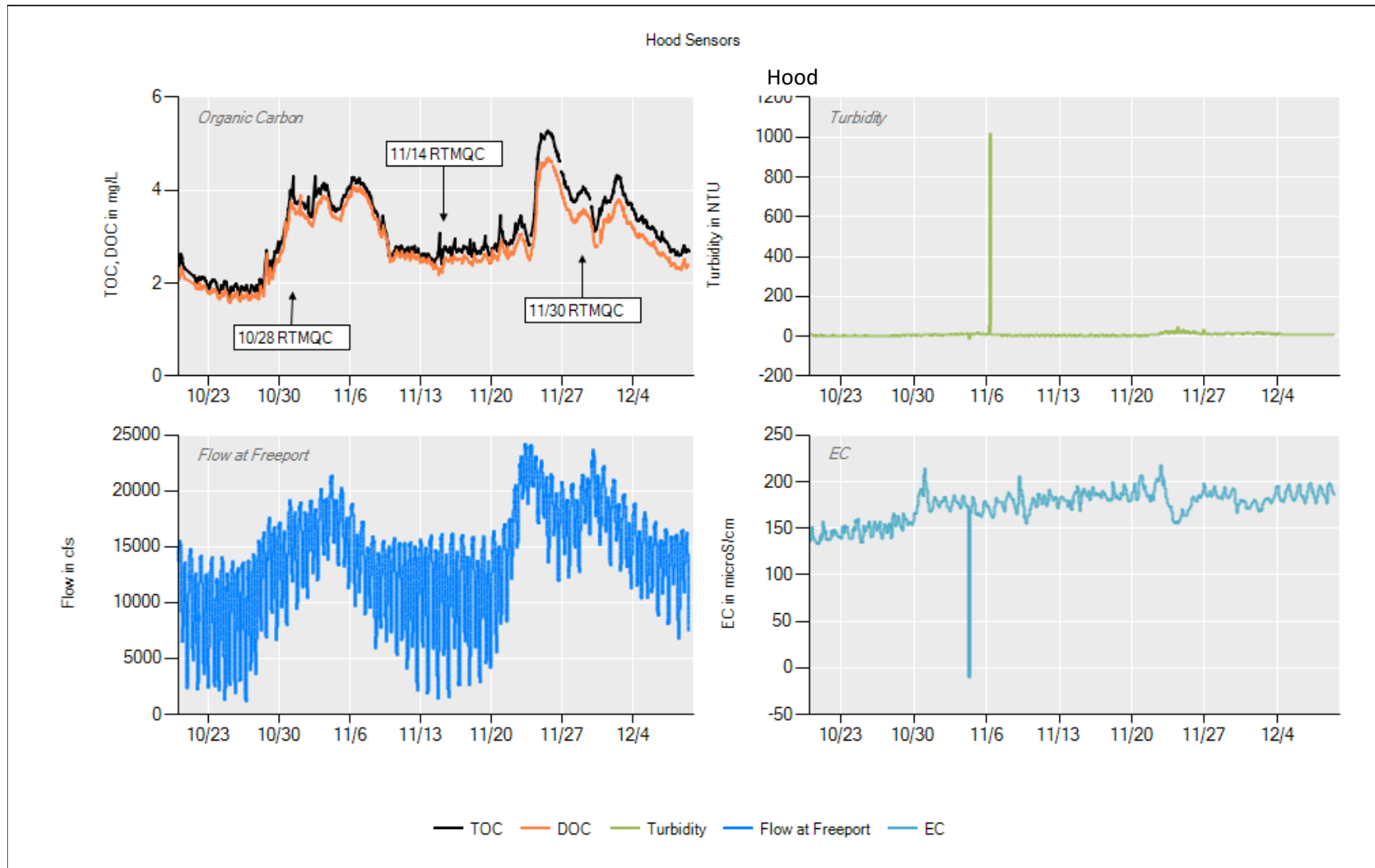
10/4 – 100 um filter change **10/12** – Analyzed QC samples, changed thw 100, 1 and 0.45 um filters **10/14** – Post filter change TOC DOC overlap
10/19 – Synced Sievers clock to computer clock, 6 min difference, changed acid cartridge in Sievers, changed 100 um filter **10/27** – Changed 100 and 1 um filters **11/2** – Changed 100 um filter **11/16** – Changed 100, 1 and 0.45 um filters, analyzed all QC samples **11/30** – Changed the 100 and 0.45 um filters, analyzed all QC samples **12/5** – Changed 100 and 1 um filters **12/8** – Replaced the supressor and guard and analytical columns on the Dionex **12/9** – Cleaned the main intake and replaced instrument drain lines



Events: 10/27 = Modem circuit tripped, cleaned pump intake, QC & new filters. 11/1 = Power or computer outage. 11/18 = QC & new filters, cleared vegetation from pump intake area. 11/26 – 28 = Computer outage? 11/30 – 12/2 = Power outage. QC & new filters.

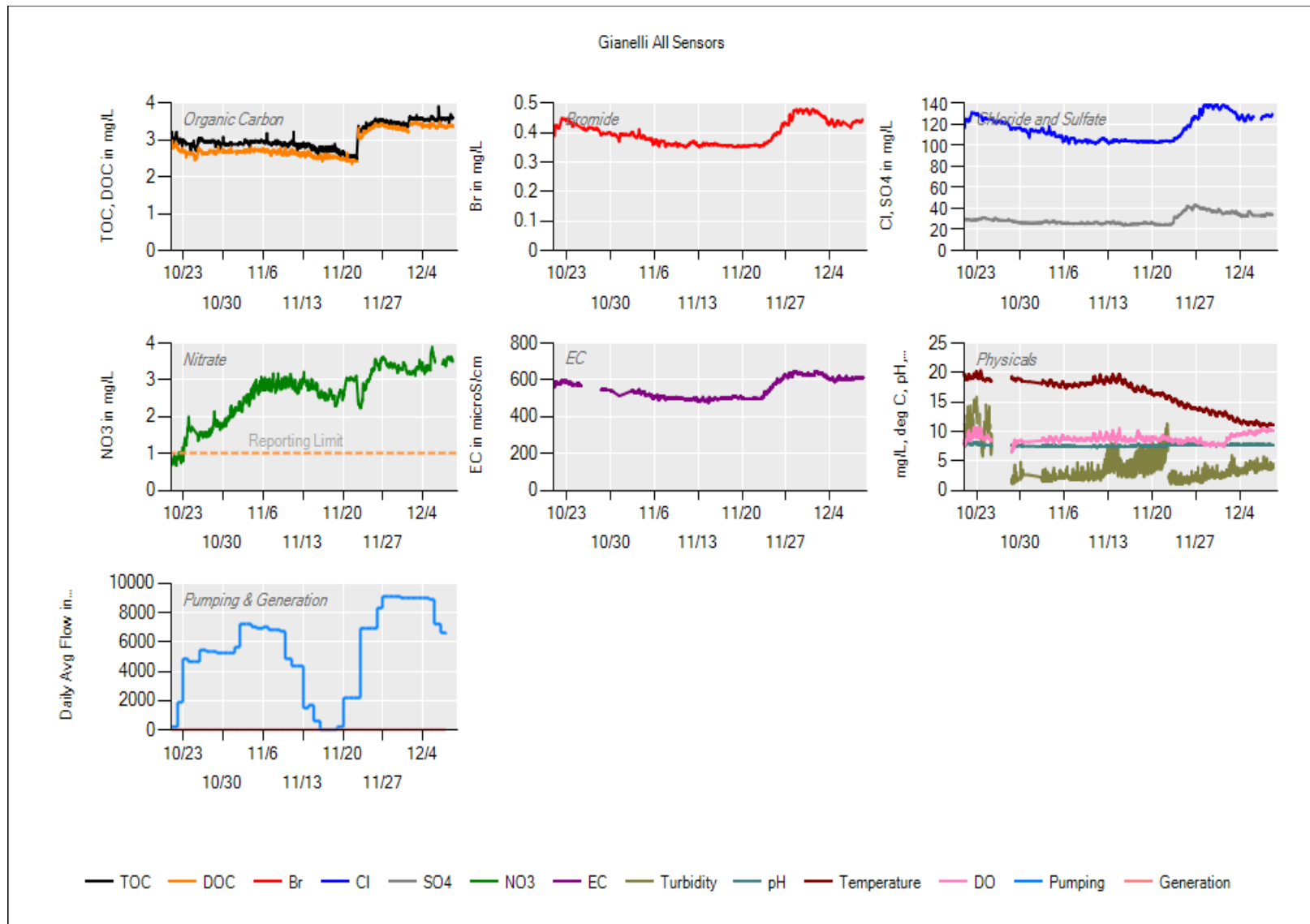


The Sievers: 10/20-12/9 - has been operational and reporting. From 12/2-12/8 there was overlap in TOC and DOC data due to a glitch in the instrument software. The Sievers was restarted and is currently functioning normally. The overlapping data was not omitted from the graphical update because it serves as an approximate value of the true data values. **The Dionex:** 10/31-11/4 the Dionex was down because it needed a new separator and guard column. A new suppressor was installed 11/18, which significantly improved resolution of anions. The Dionex is currently functioning normally.



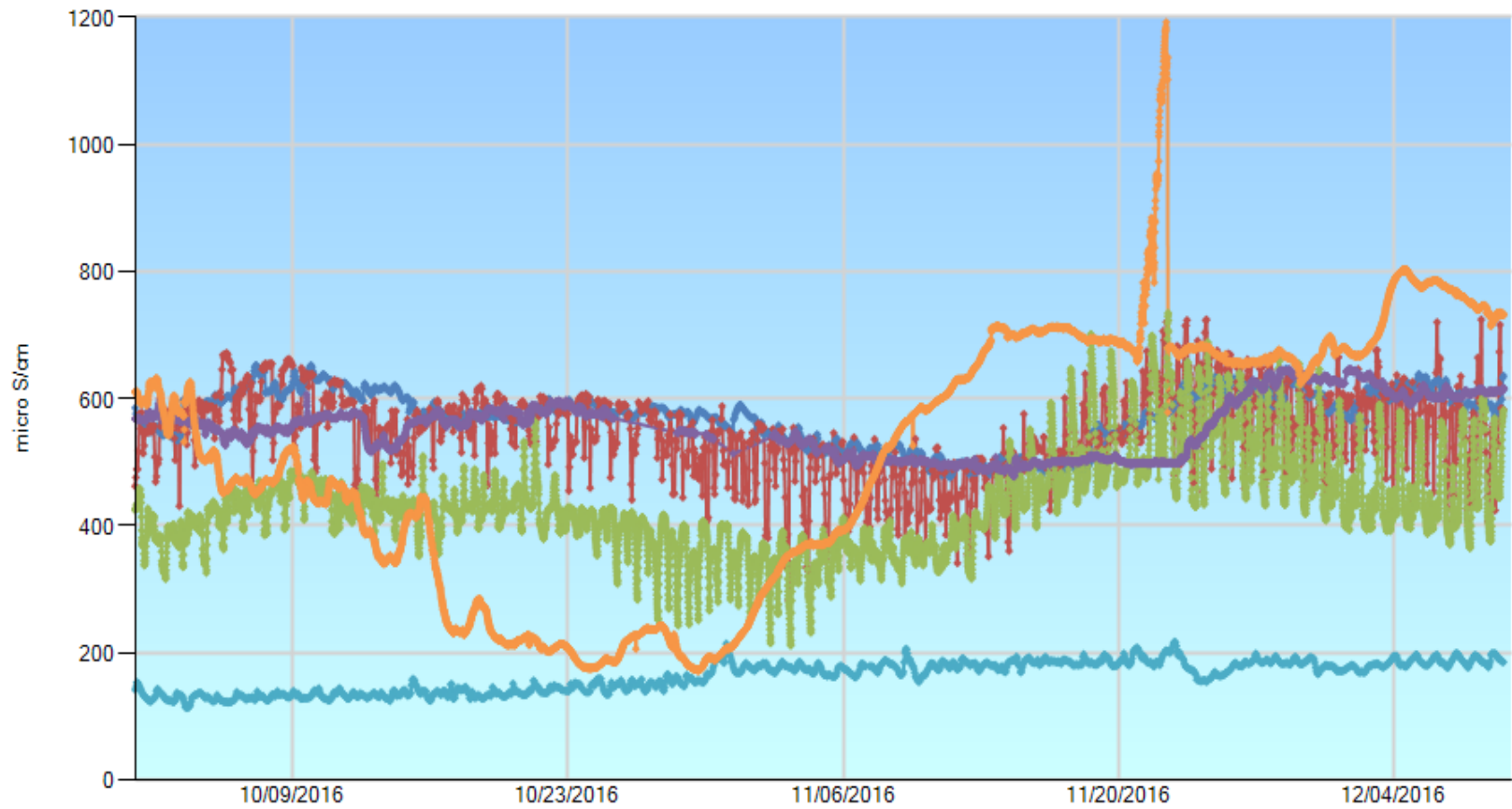
Significant Events: October 20th 2016 to December 9th 2016

- **10/28 RTMQC:** Changed all filters
- **11/30 RTMQC:** Changed all Filters



- 10/25 – YSI stopped logging data to the station computer.
- 10/31 – YSI internal data filled up and caused the recording to stop.
- 11/22 – Filter change and cleaning the YSI housing caused a shift in readings.

All Station plus Clifton Court EC



- | | | | |
|---|---|---|--|
| — HBP - Harvey Banks Pumping Plant-Electrical Conductivity (WS) | — DMC - DMC Headworks-Electrical Conductivity | — SRH - Sacramento River at Hood-Electrical Conductivity (WS) | — VER - Vernalis (USBR)-Electrical Conductivity (WS) |
| — CLC - Clifton Court-Electrical Conductivity (WS) | — ONG - O'Neill Forebay at Gianelli Pumping Plant-Electrical Conductivity | | |

