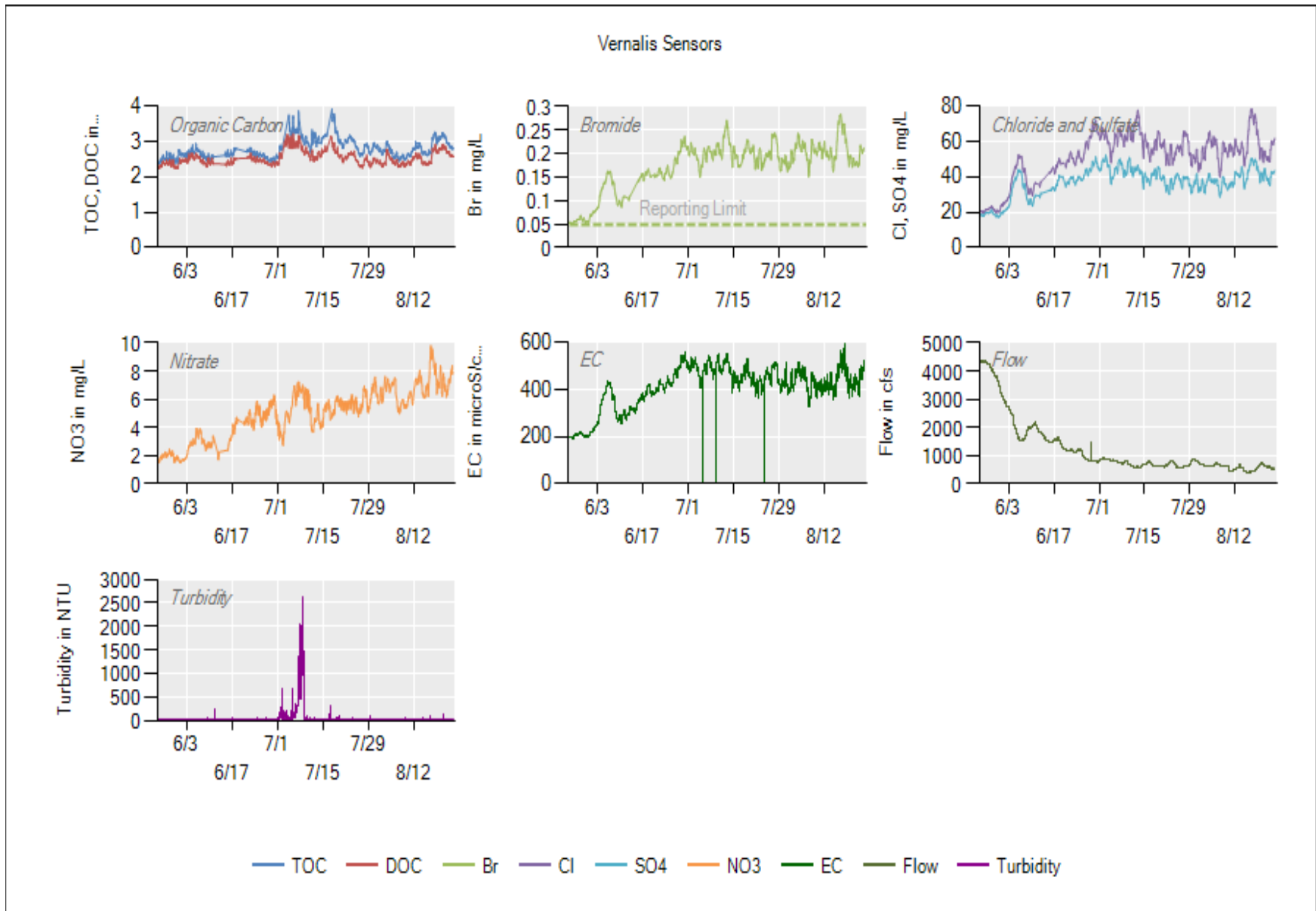
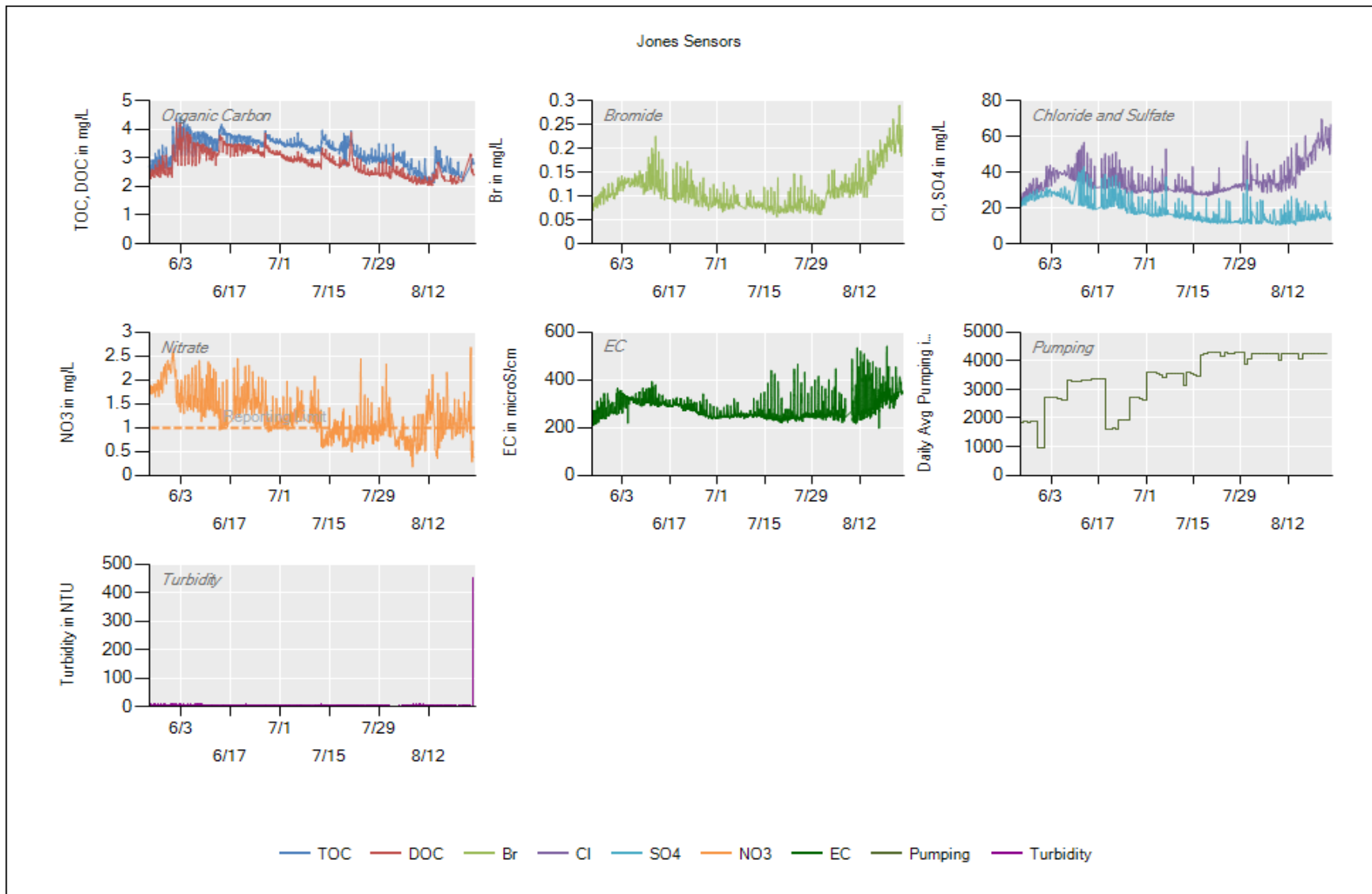


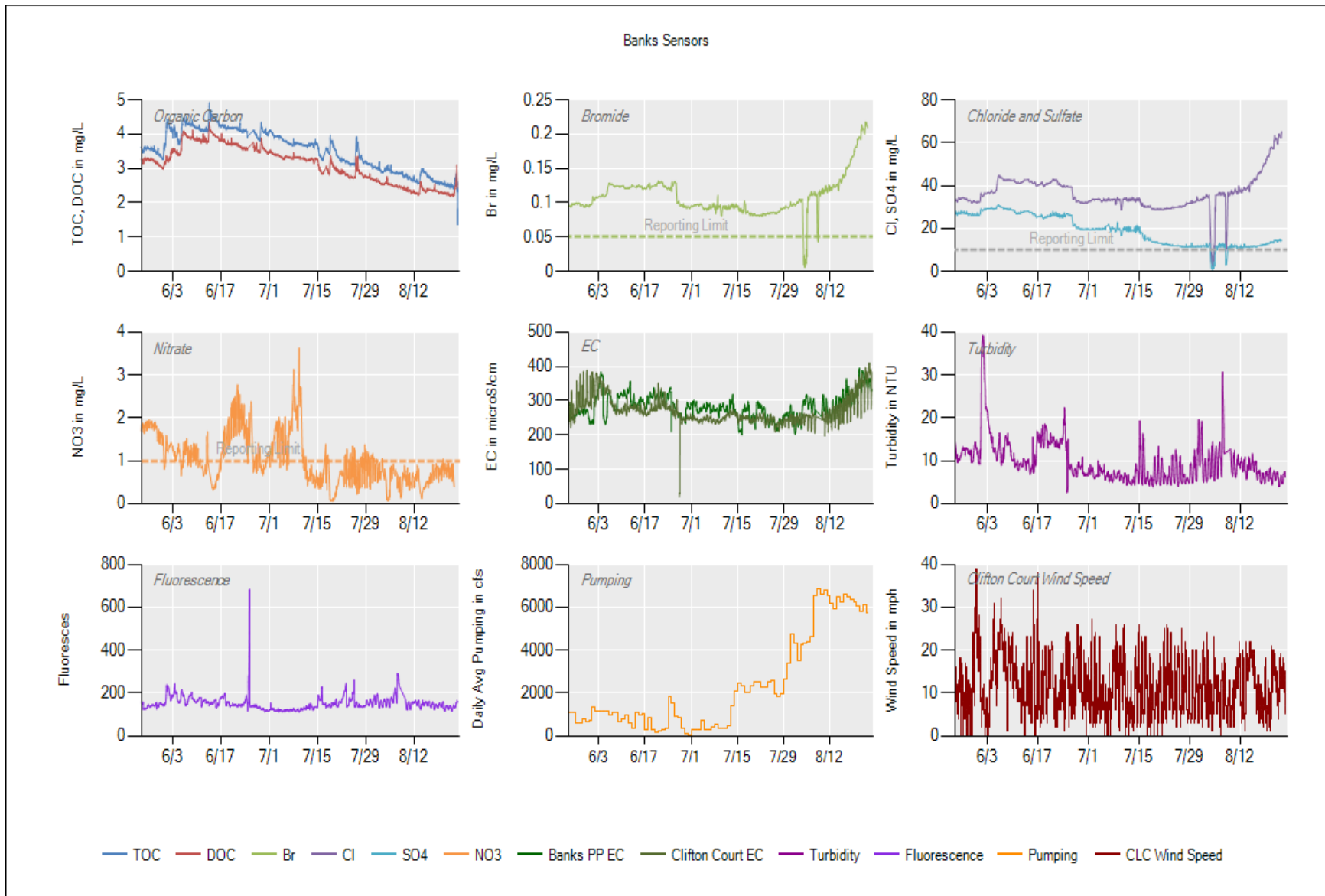
5/31, 6/12, 6/13, 7/13, 7/17 and 8/14 – Routine maintenance and or QC sample analysis.



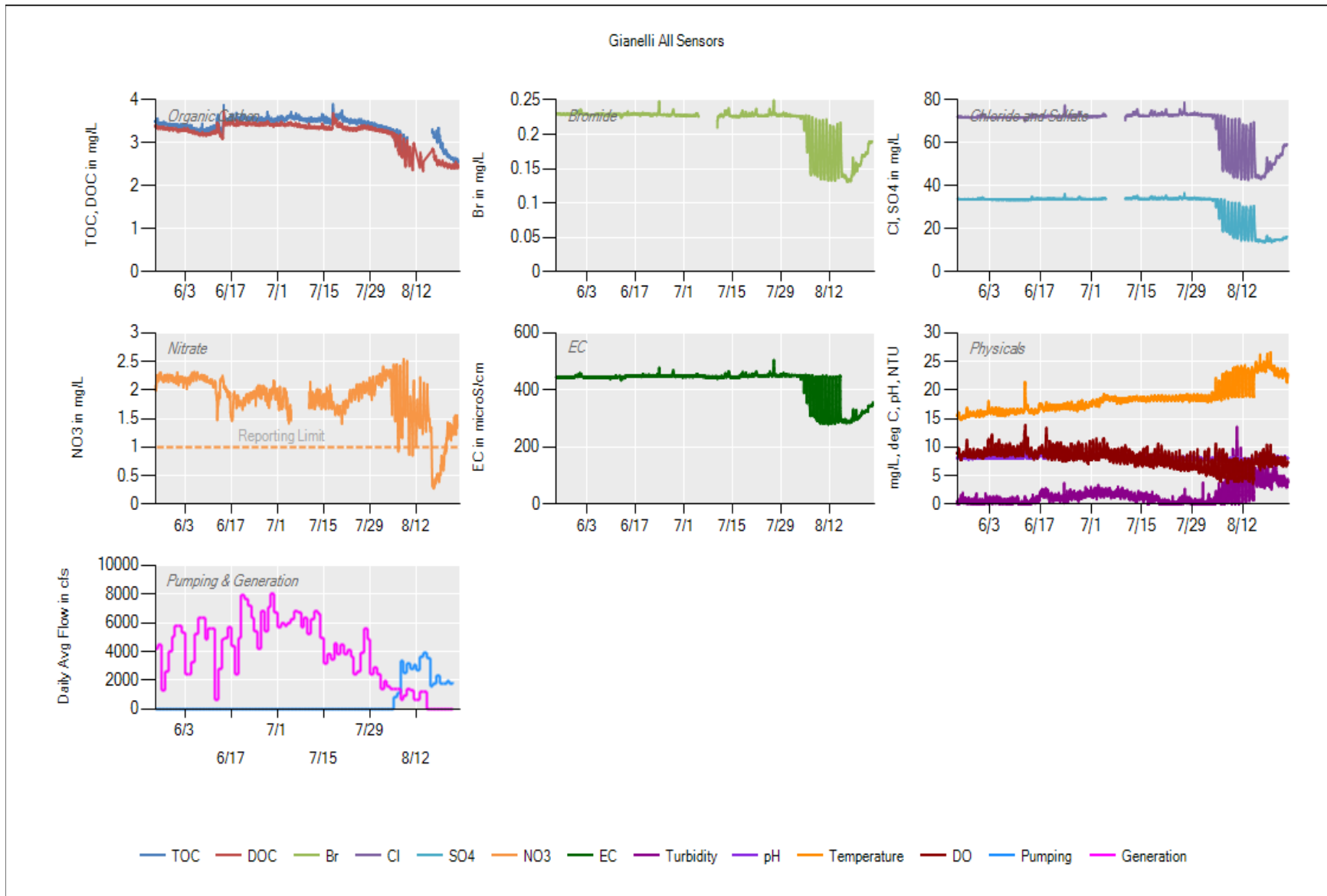
Routine maintenance: Filter changes: **7/23, 8/3, 8/17**. Cleared sand to the cobble substrate and lowered the pump for the last time on 8/20.



5/31 to 8/13 - Normal station maintenance and QC sample analysis. 6/26 - Dionex PM performed 8/3 - Deployed EXO Sonde

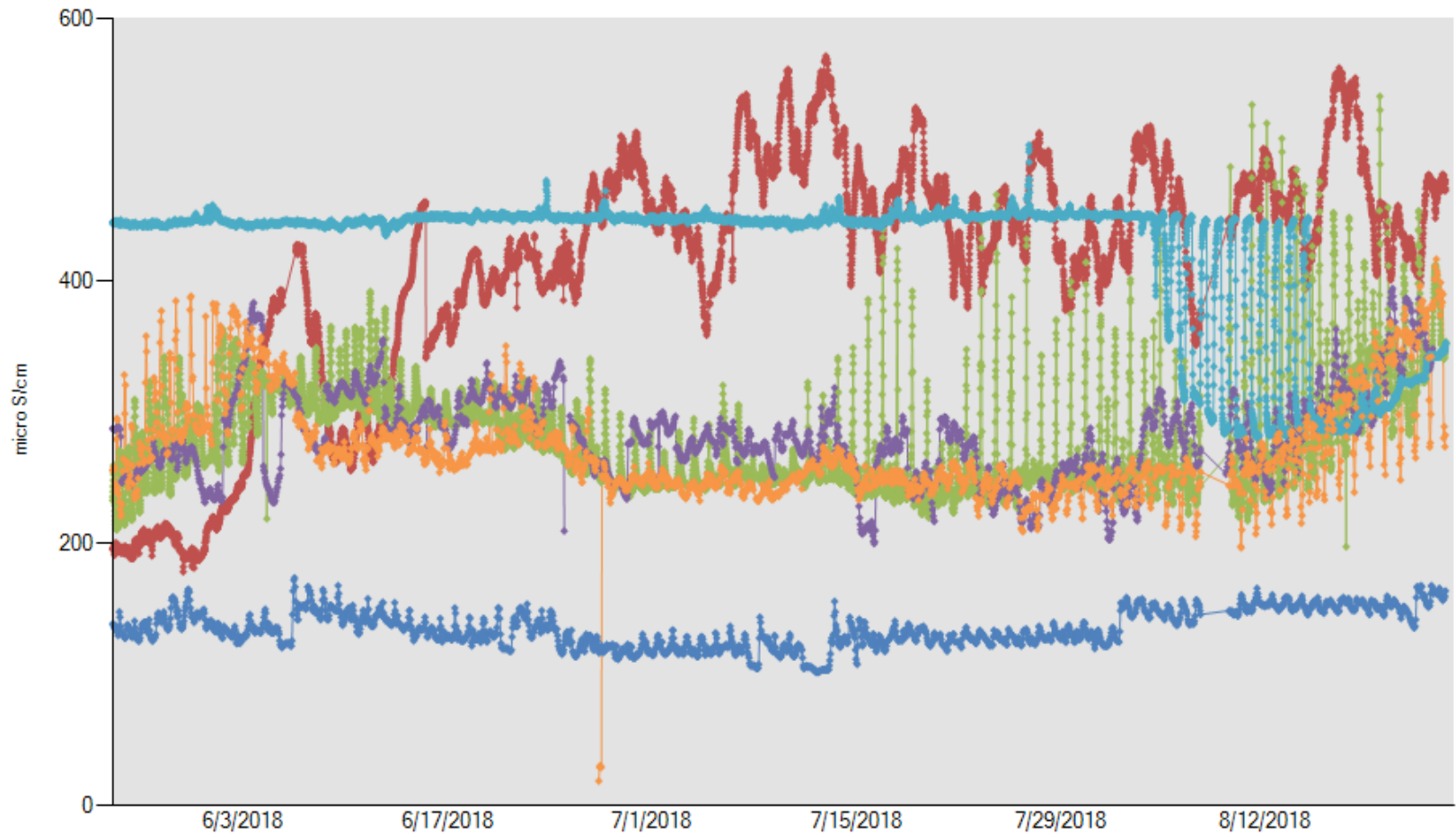


6/28 – Dionex annual maintenance 8/13 – Changed system filters 8/23 – Changed filters



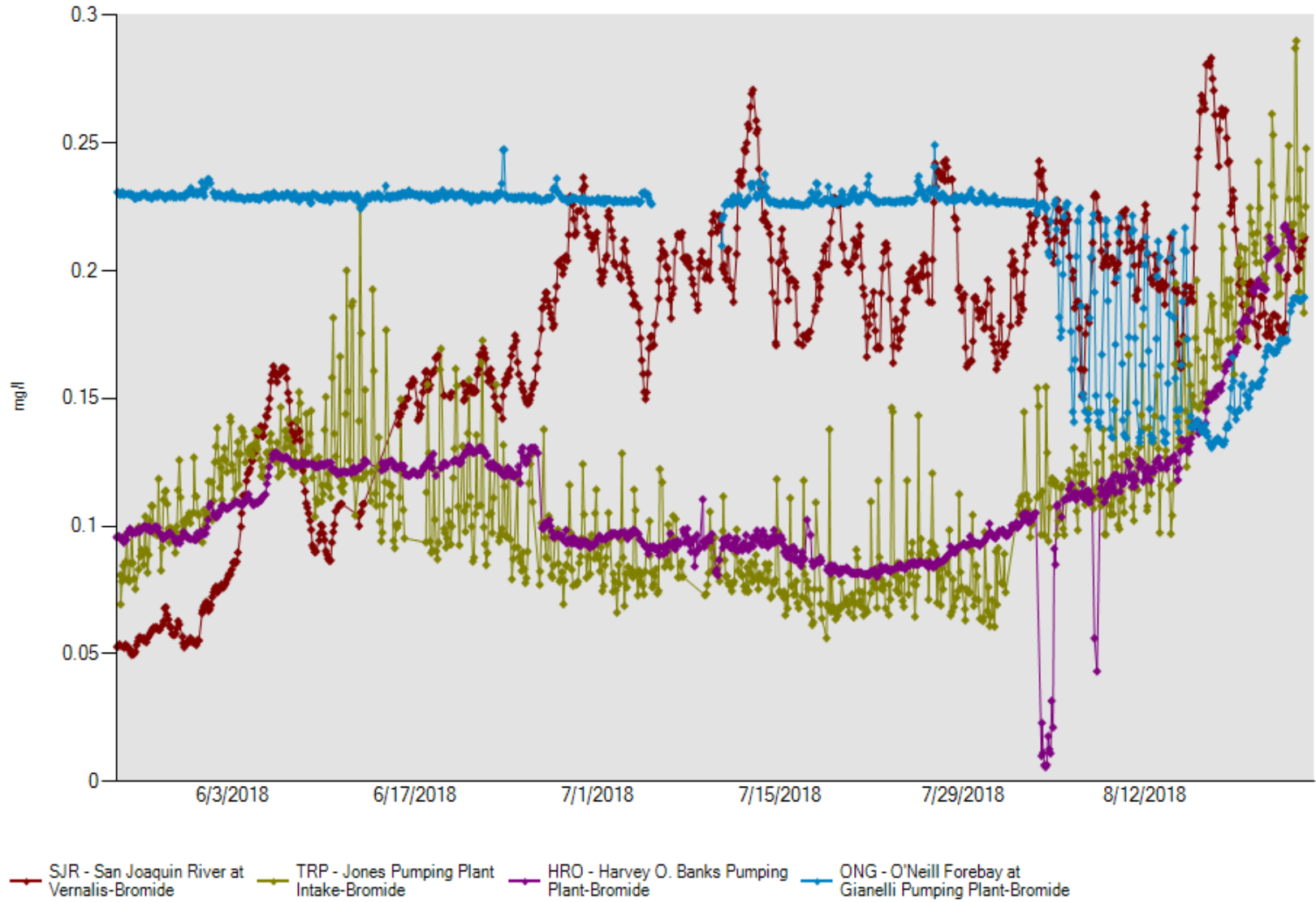
- 7/5 to 7/10 – The Dionex ran low on DI water causing it to pull air into the system. No further issues after restarting the instrument.
- 8/14 to 8/16 – The filters began clogging, causing sporadic organic carbon readings

All Station + Clifton Court EC

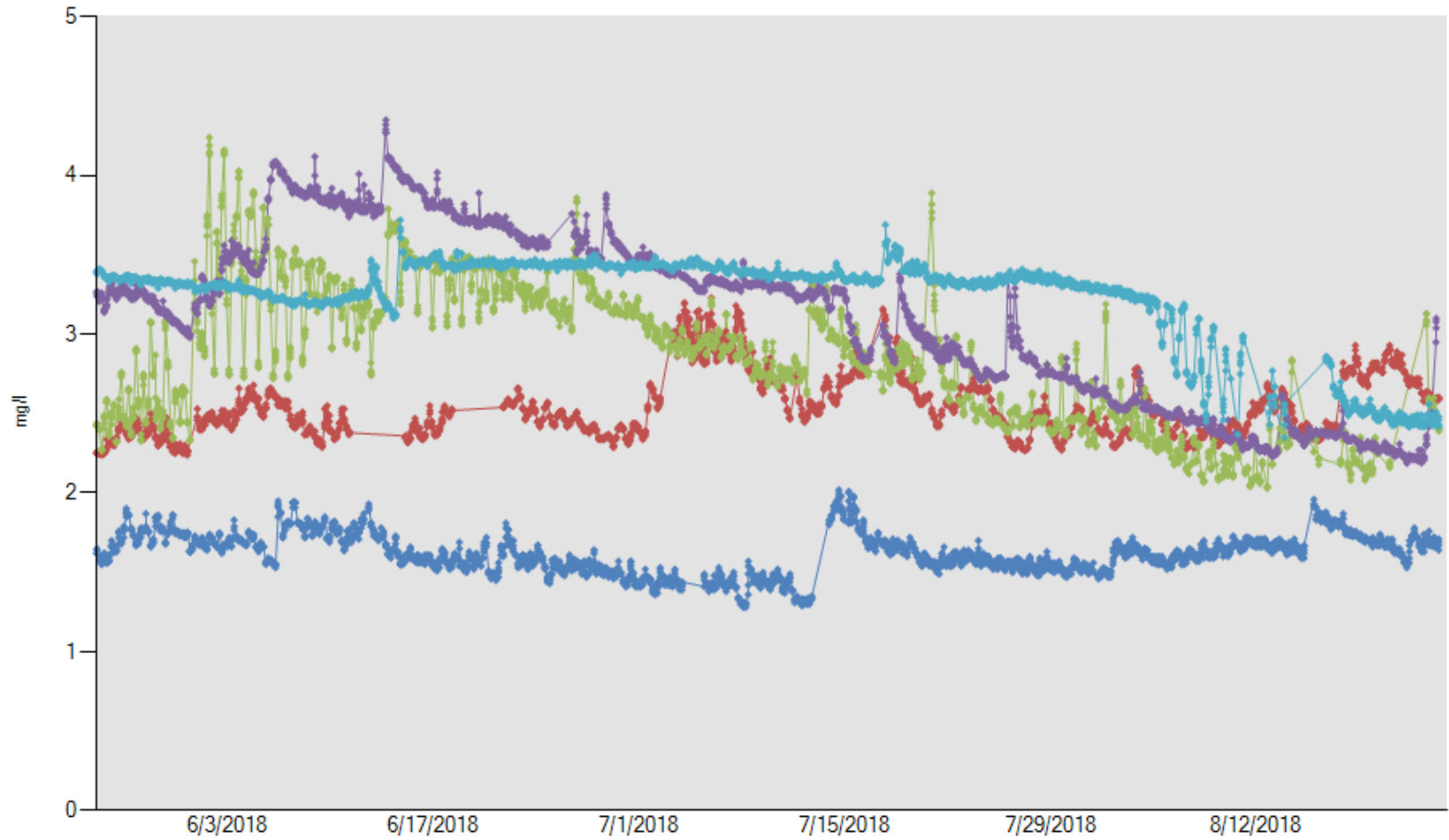


- SRH - Sacramento River at Hood-Electrical Conductivity (WS)
- VER - Vernalis (USBR)-Electrical Conductivity (WS)
- DMC - DMC Headworks-Electrical Conductivity
- HBP - Harvey Banks Pumping Plant-Electrical Conductivity (WS)
- ONG - O'Neill Forebay at Gianelli Pumping Plant-Electrical Conductivity
- CLC - Clifton Court-Electrical Conductivity (WS)

Vernalis, Jones, Banks and Gianelli Bromide



All Station DOC



— SRH - Sacramento River at Hood-Sievers DOC — TRP - Jones Pumping Plant Intake-Sievers DOC — HRO - Harvey O. Banks Pumping Plant-Sievers DOC — ONG - O'Neill Forebay at Gianelli Pumping Plant-Sievers DOC
— SJR - San Joaquin River at Vernalis-Sievers DOC