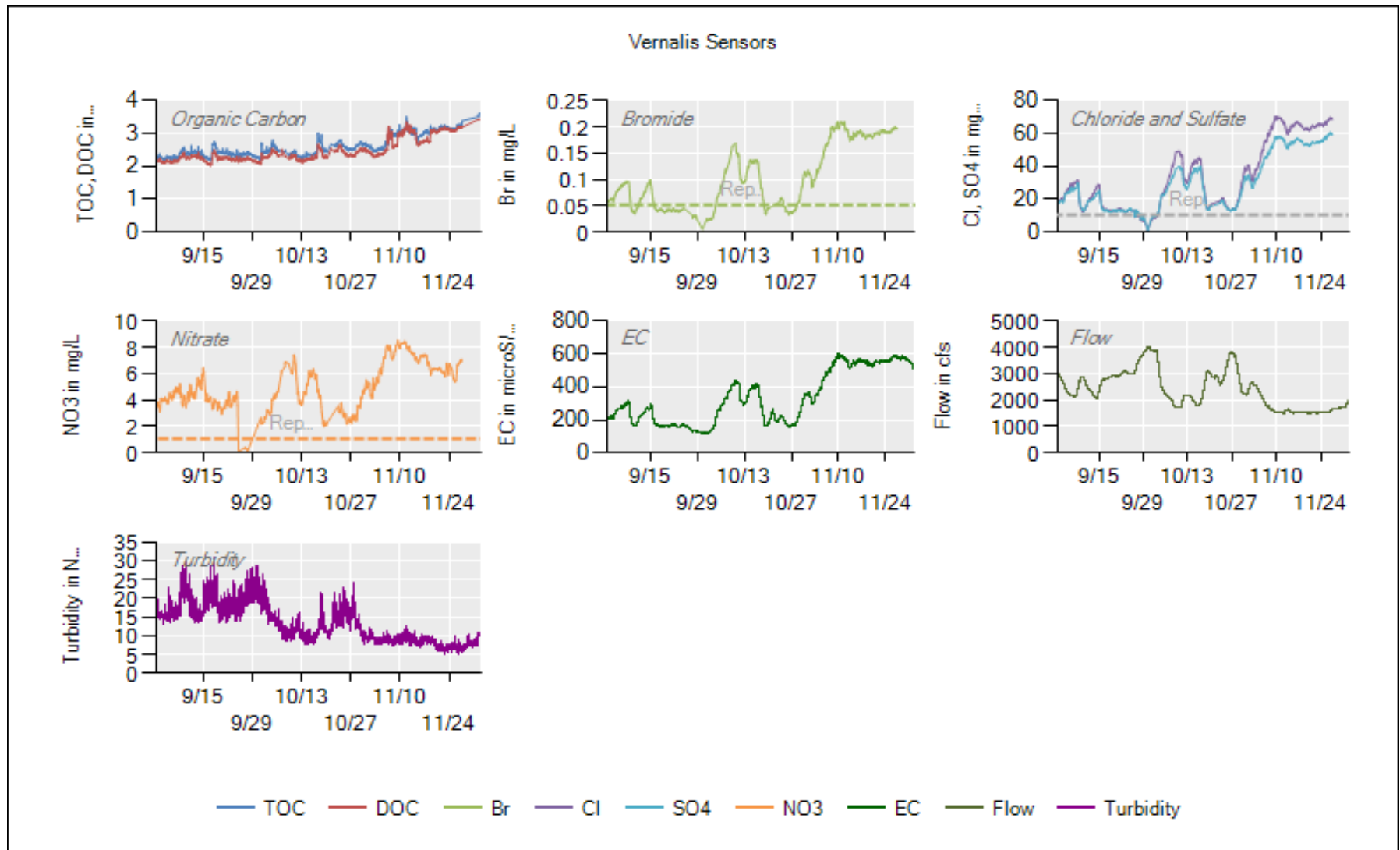
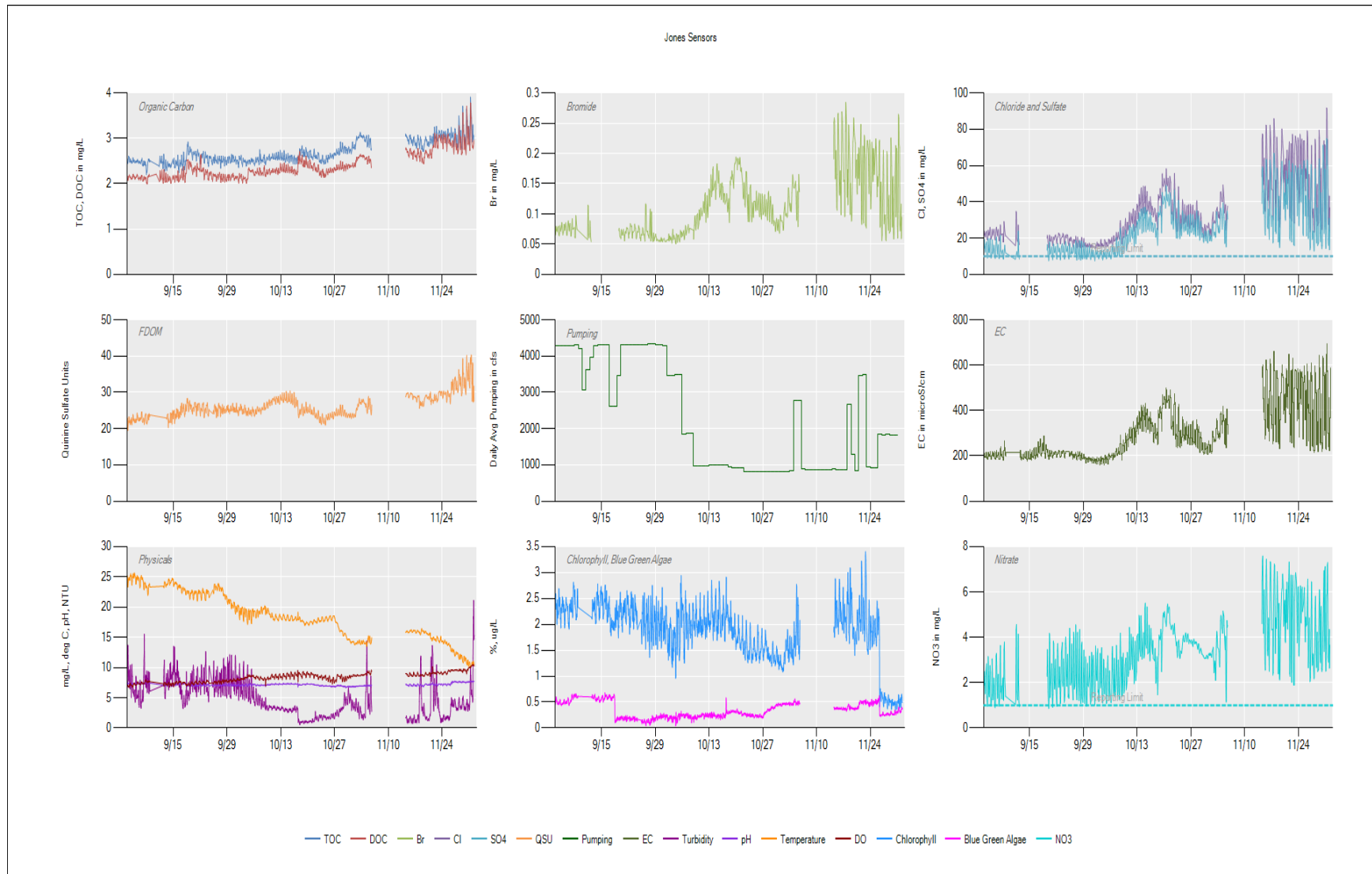


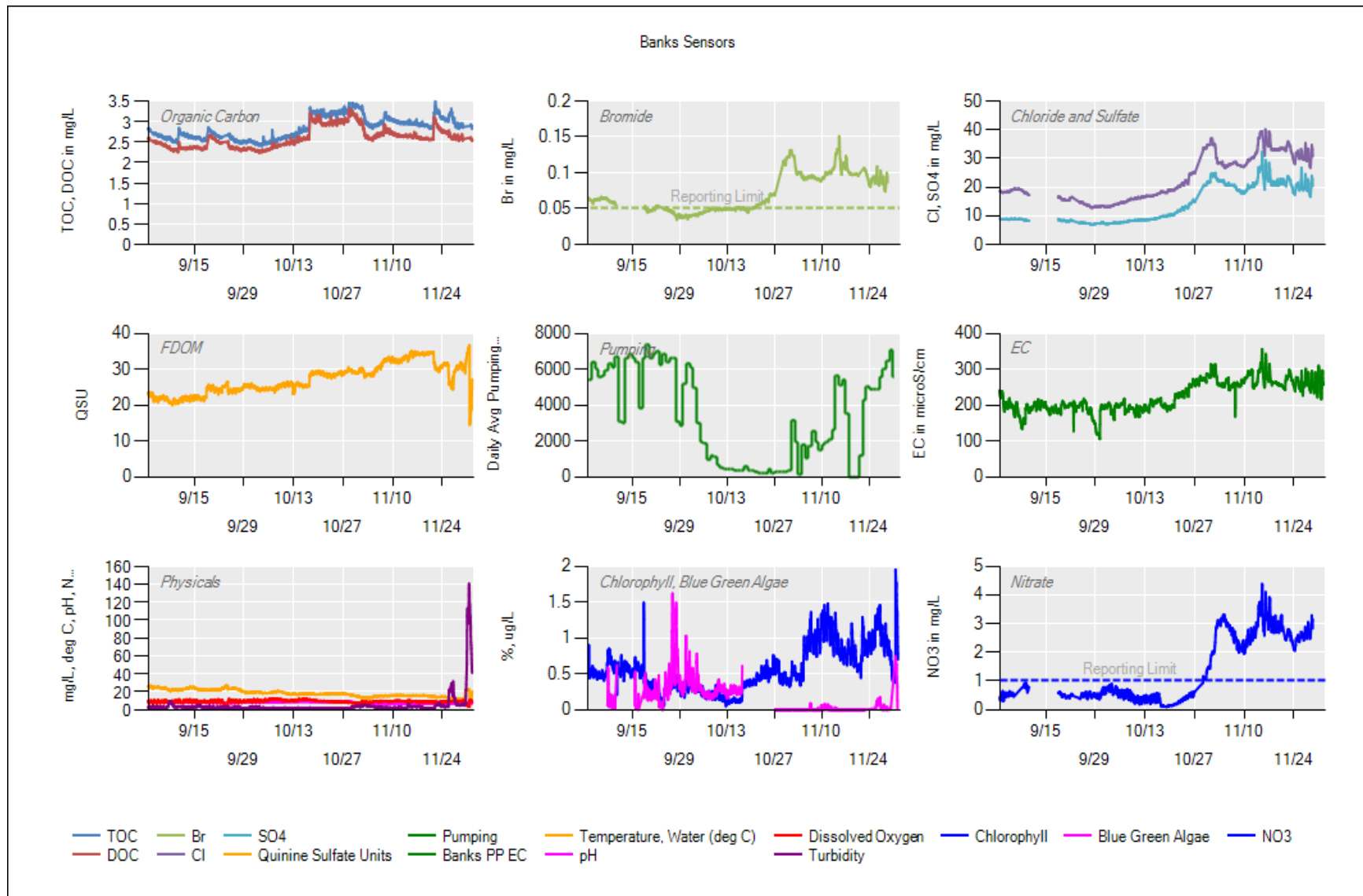
9/24: Delivery system filters replaced - 10/31: 1 um and 0.45 um filters replaced, 50 um filter cleaned -



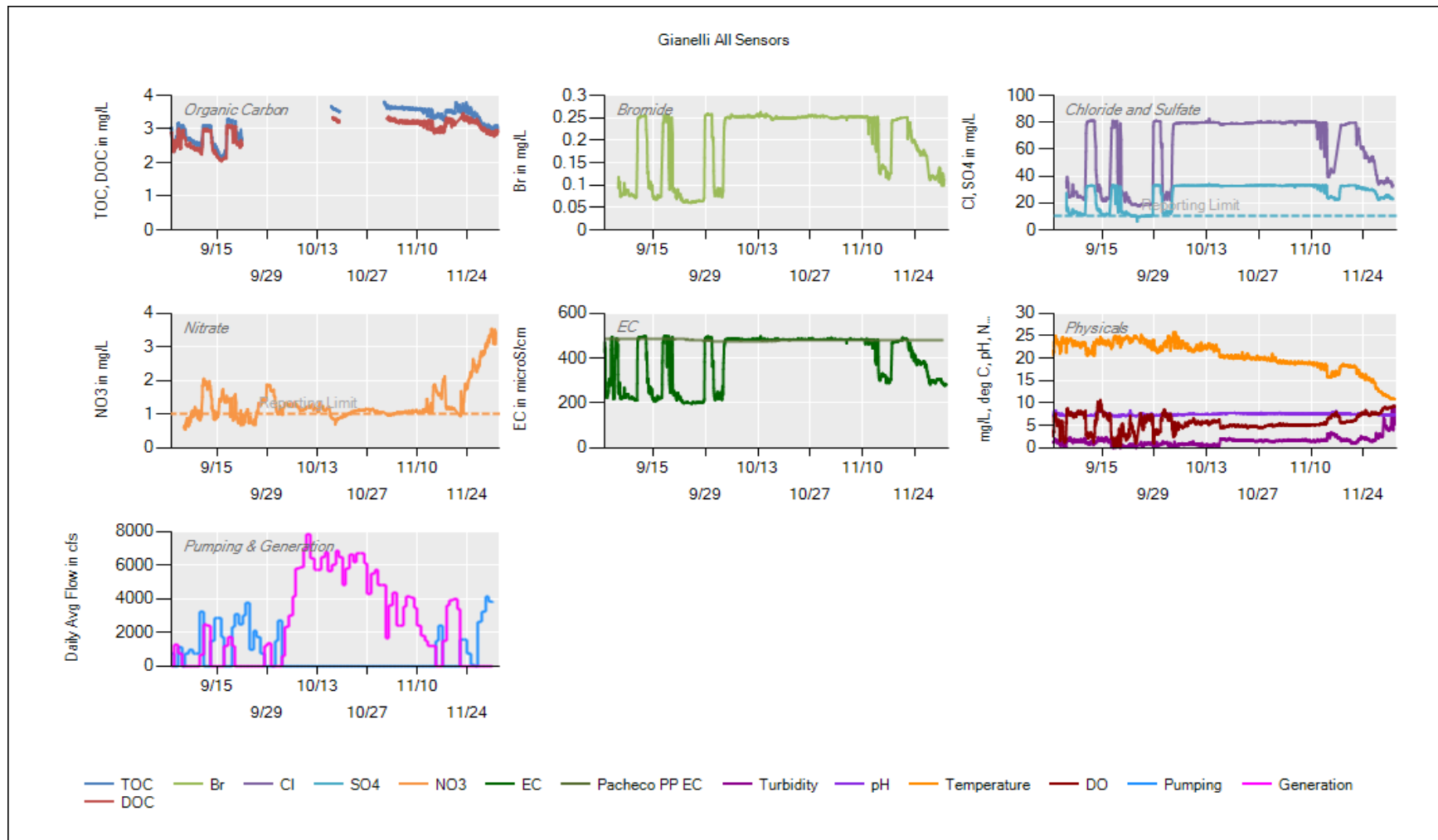
EVENTS: Filter Changes = 8/28, 9/17, 10/1, 10/17, 11/6, & 11/18. **9/25 – 10/1** = Water supply line and valve to anion analyzer clogged. Line replaced. **11/9 – 11/14** = TOC supply valve leaking, causing continuous sampling and artificially high DOC results. Valve replaced. **11/18** = Dionex column heater replaced. **11/27 – 12/2** = Computer glitch or power outage, causing anion analyzer and data transfer to cease. Organic carbon analyzer continued to operate, and TOC/DOC data will be manually exported and patched in at a later date.



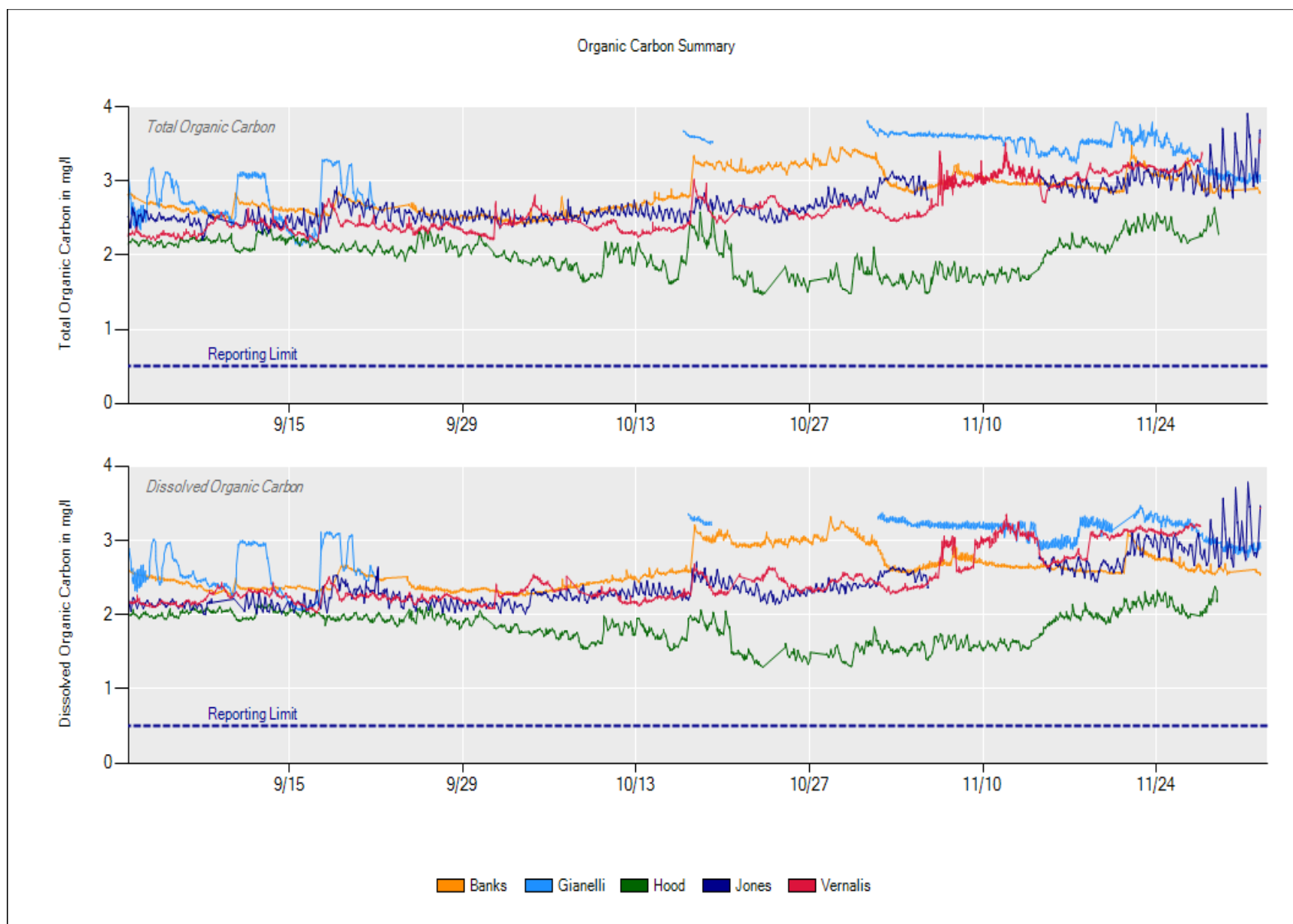
11/5/19 - Intermittent power outages have been occurring related to a main electrical breaker tripping. It doesn't appear to be related to our instrumentation so SLDMWA staff are working to resolve. 11/15/19 – SLDMWA repaired electrical breaker. Algal sensors show significant variability from instrument swap outs. We are looking into this issue.

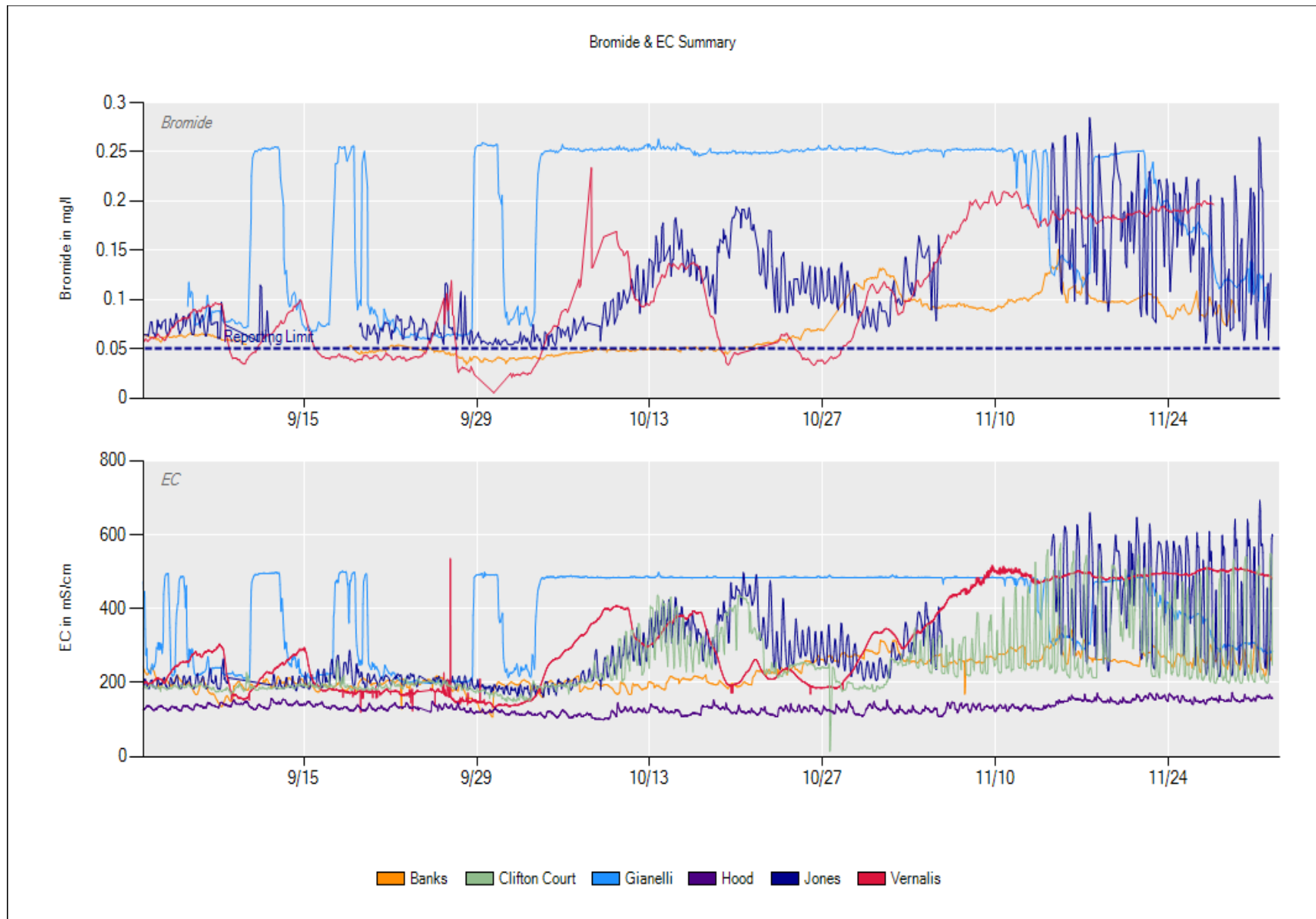


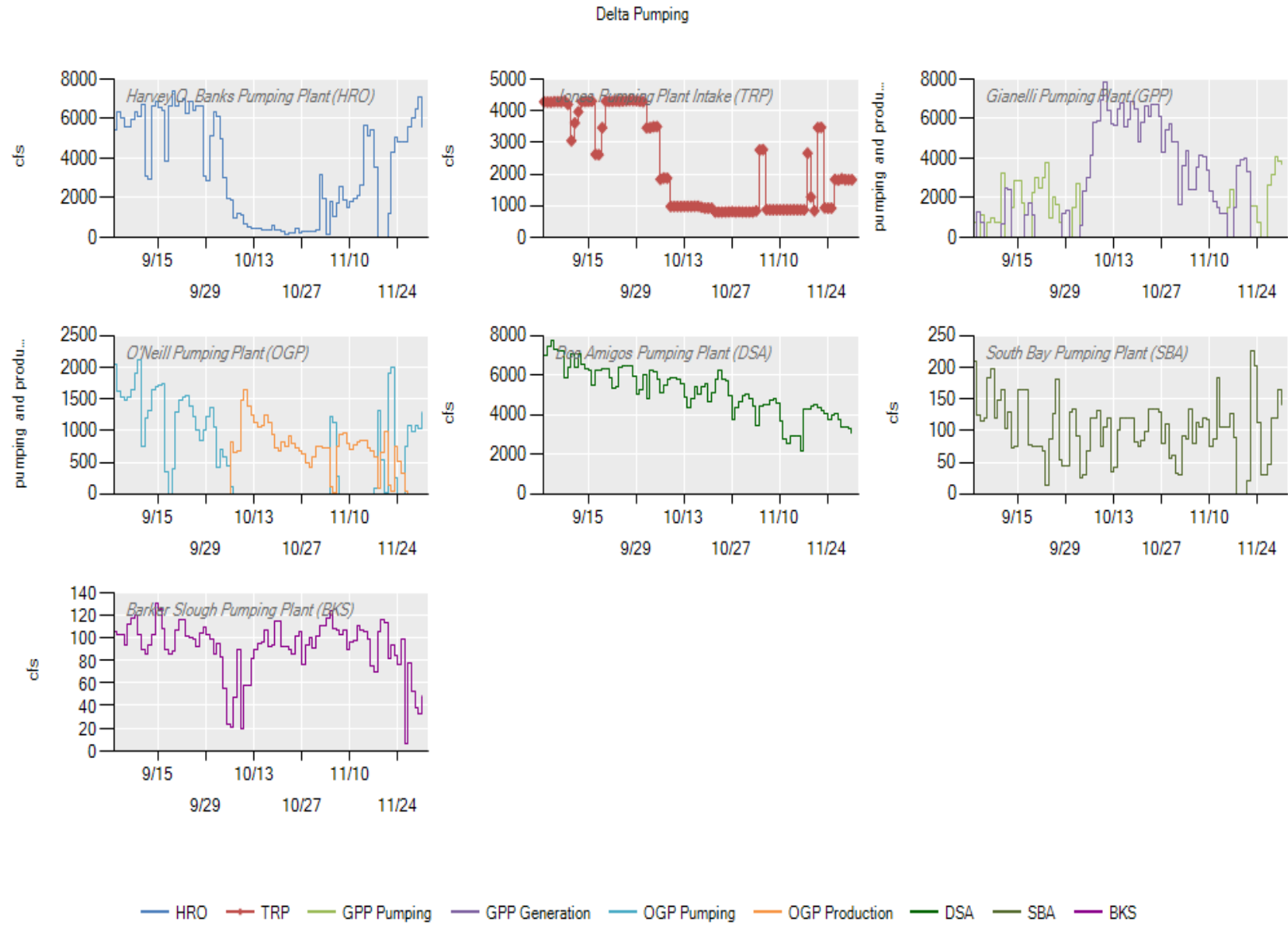
9/18: changed all filters – 10/17: changed all filters – 10/28: changed filters, replaced anion analyzer component – 11/22: changed all filters



9/5: Troubleshoot anion analyzer issue. – 9/17: changed the 100 um and 1 um filters, changed out sonde – 9/24: anion analyzer troubleshoot, carbon analyzer troubleshoot – 9/25: carbon analyzer issue, needs a new power supply – 10/16: changed all filters – 10/31: The carbon analyzer was re-installed after the power supply was replaced, the 100 um and 1 um filters were changed – 11/1: anion analyzer troubleshoot – 11/20: all filters replaced, sonde replaced







Precipitation & Flow

