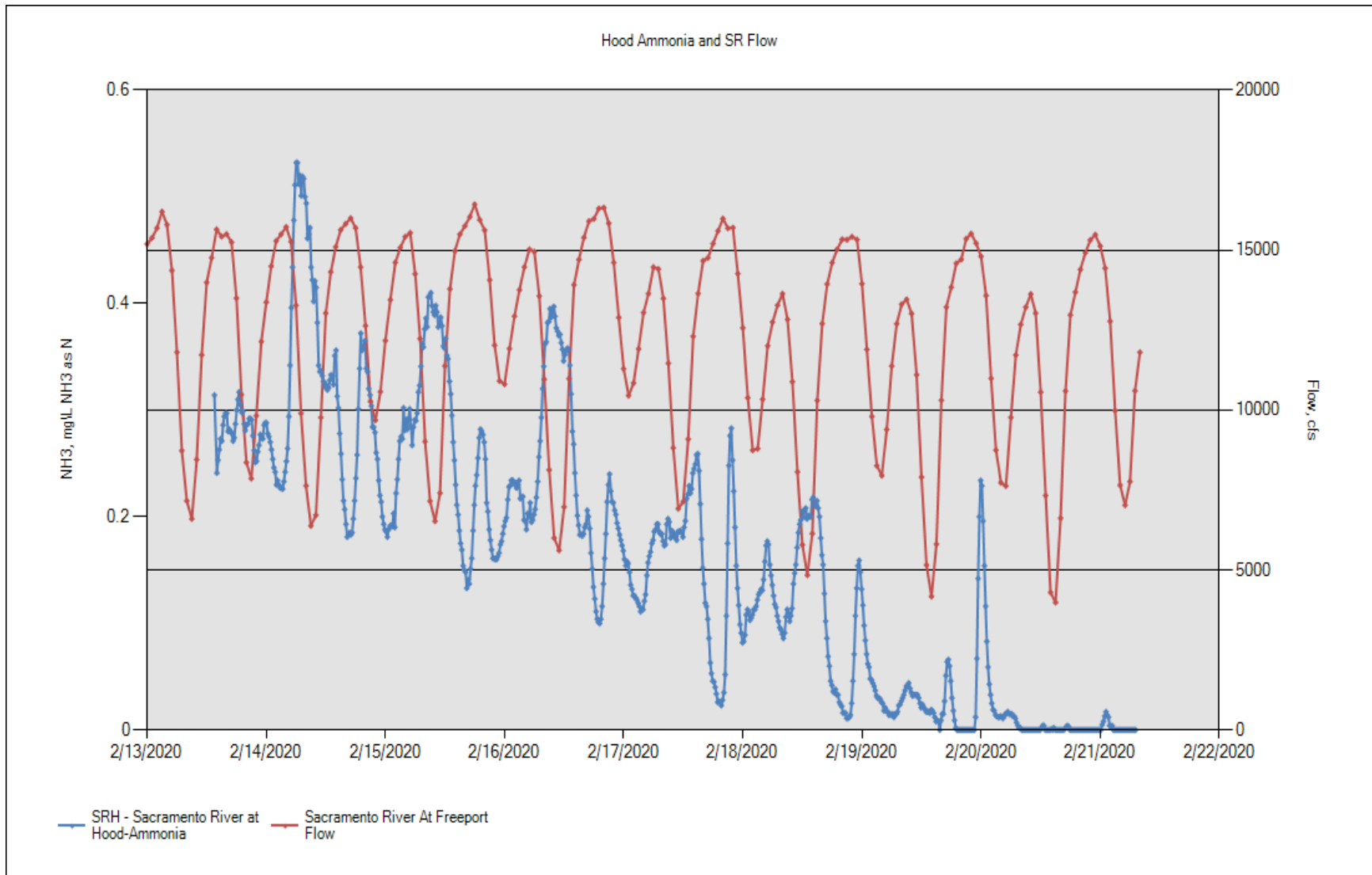
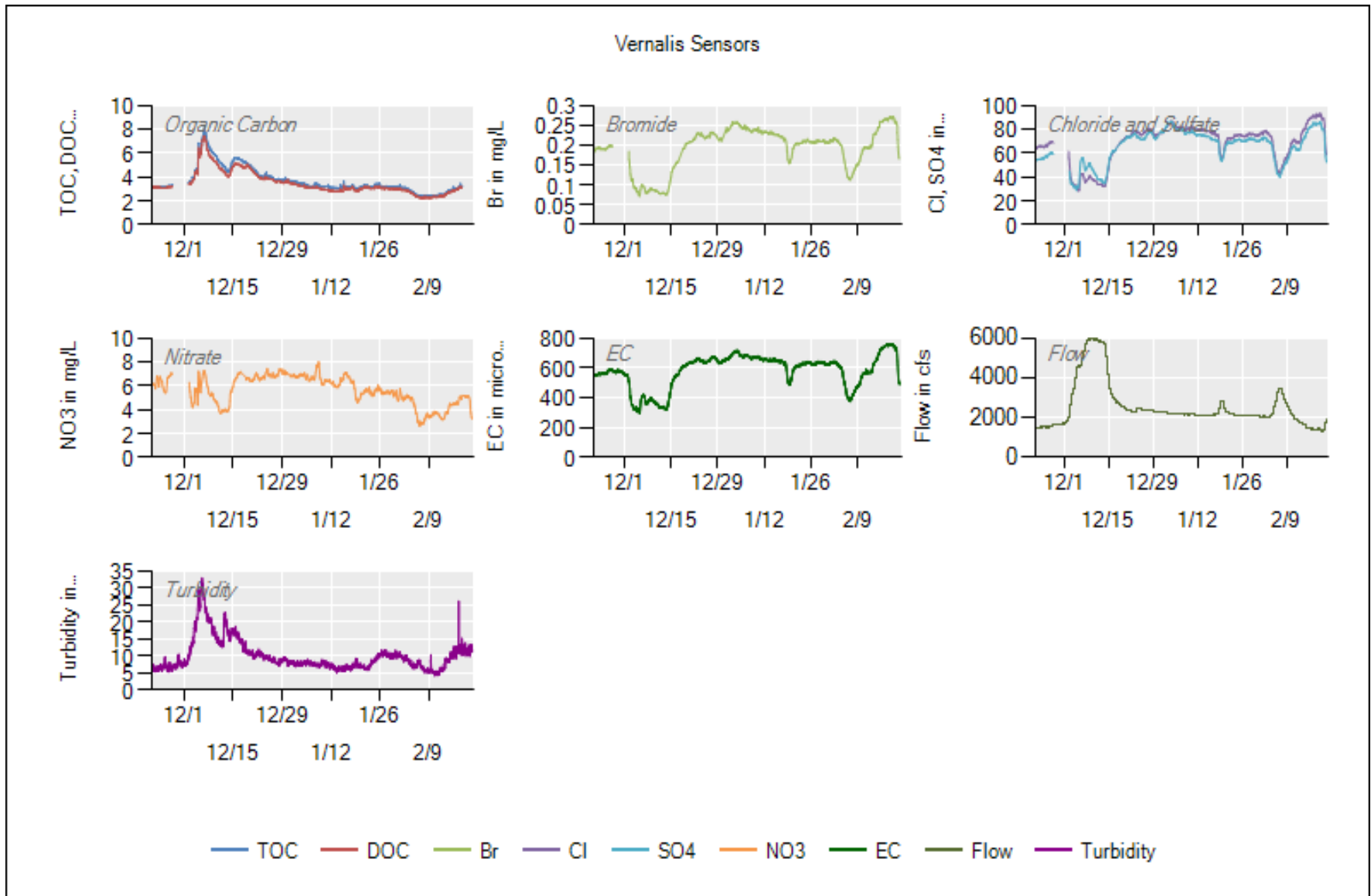


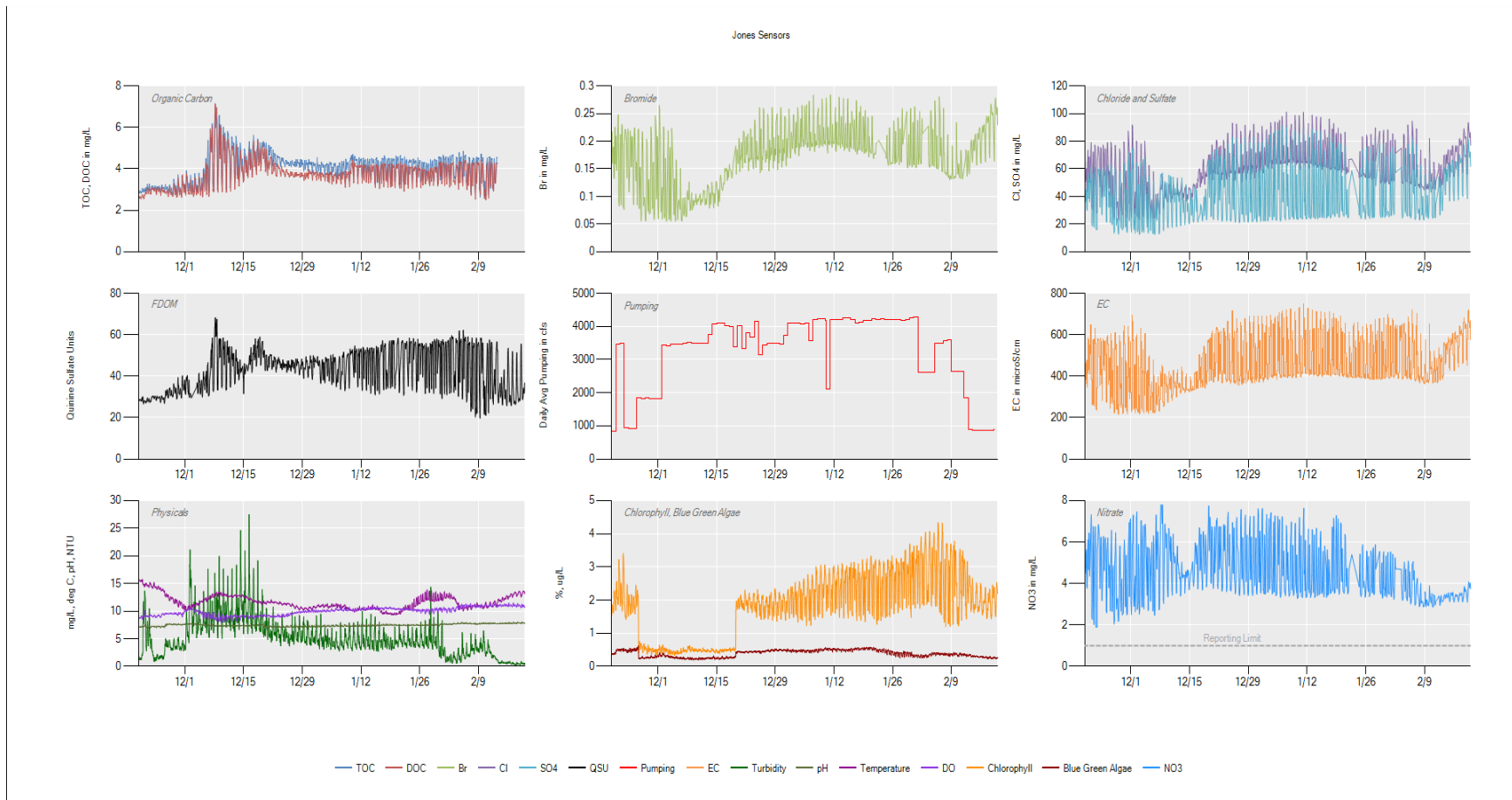
11/20: Cleaned filter housings, did not replace filters, analyzed all QC samples - 12/18: Analyzed all QC samples, cleaned all filter housings and 50 um filter, did not replace filters - 1/7 - Replaced the old station computer with a new (used) laptop - 1/15: Analyzed all QC samples, cleaned filter housings and replaced all system filters - 2/12: Cleaned filter housings, did not replace system filters, analyzed all QC samples



12/18: Reinstalled the ammonia analyzer – 2/13: Started the ammonia analyzer, flushed the system, after some adjustments and troubleshooting was able to calibrate, analyzed a single check standard, 1.0 ppm which reported 1.05 ppm, started analyzing Sacramento River water

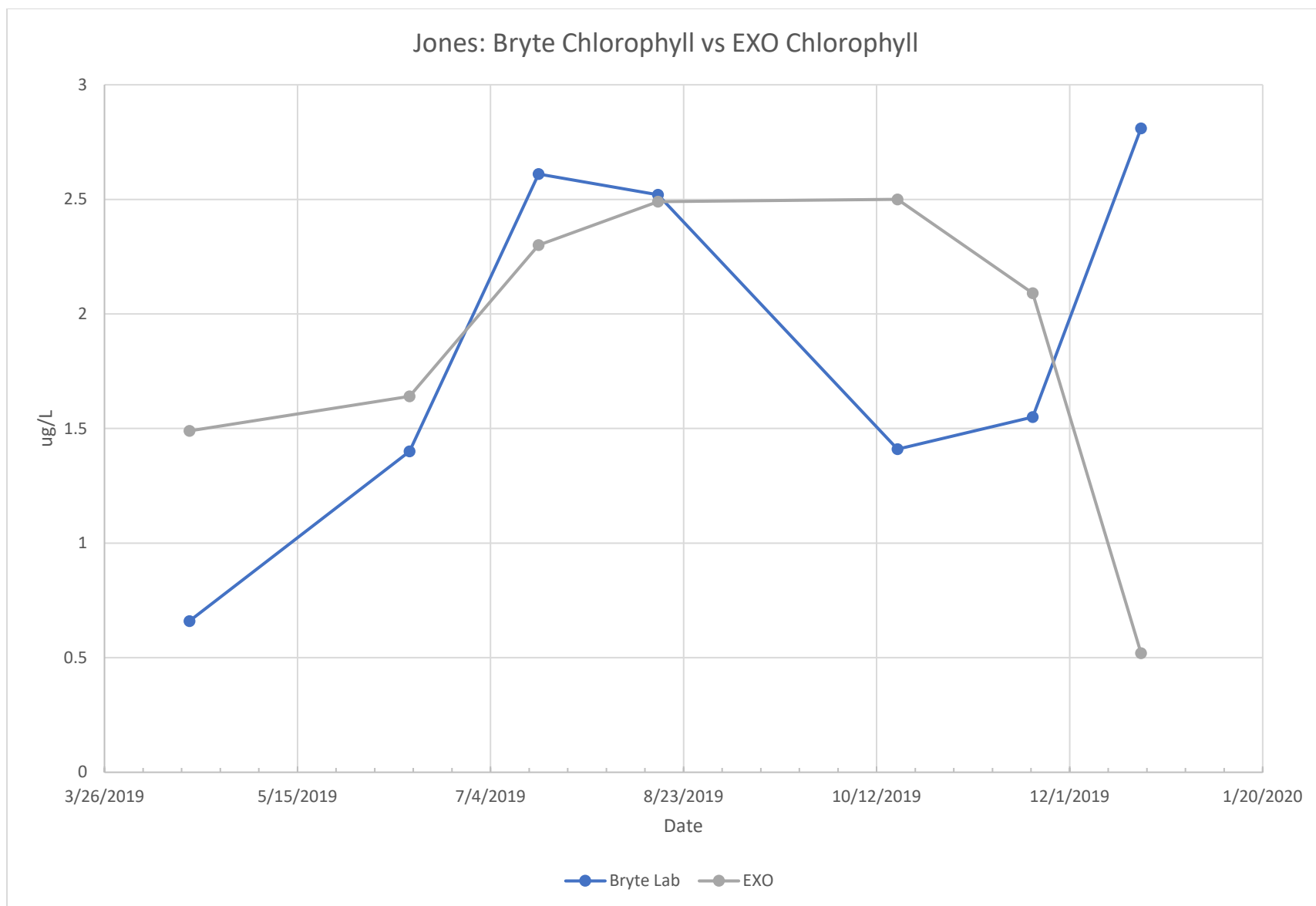


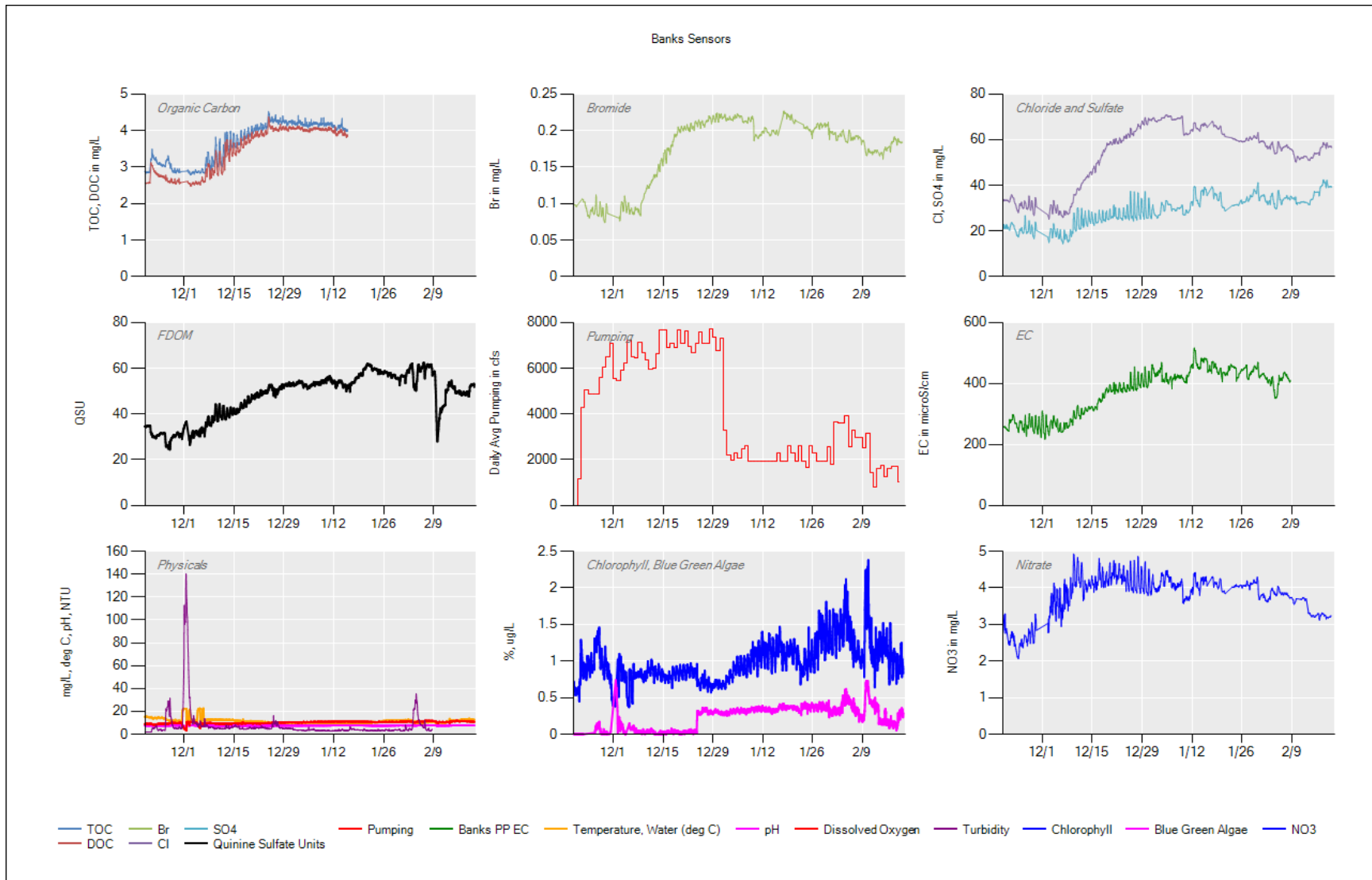
Events: 11/27-12/2 = Power outage over the holiday. 12/1 – 12/15 = precipitation and reservoir releases. 2/18 = organic carbon analyzer removed for annual service/calibration.



11/21/2019 – filter change. **11/26/2019** – EXO exchange. **12/12/2019** – filter change. **12/19/2019** – EXO exchange and filter change. **1/9/2020** – regular maintenance. **1/30/2020** – EXO exchange and filter change.

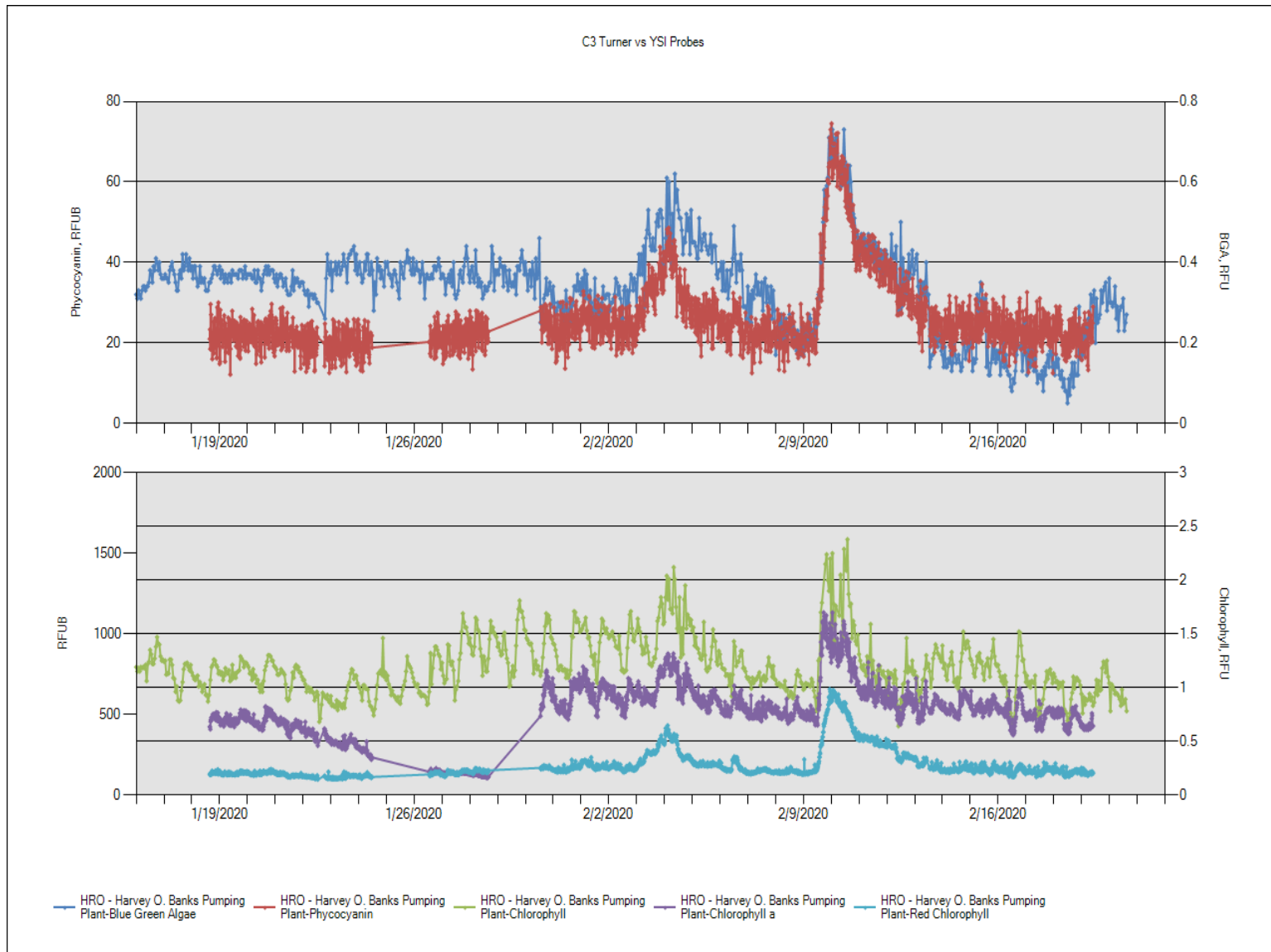
All instruments have been operational and reporting over the last few months, except for the organic carbon analyzer and the EXO TAL sensor. The Organic Carbon analyzer was removed 2/13/2020 for its annual maintenance. It will be reinstalled sometime during the week of 2/23/2020. There was a miscalibration of the EXO chlorophyll and BGA sensor which resulted in artificially low values. The sensor will be reset to its factory default calibration and recalibrated with a more stringent calibration standard. All questionable data has been flagged. No data was reported to CDEC.



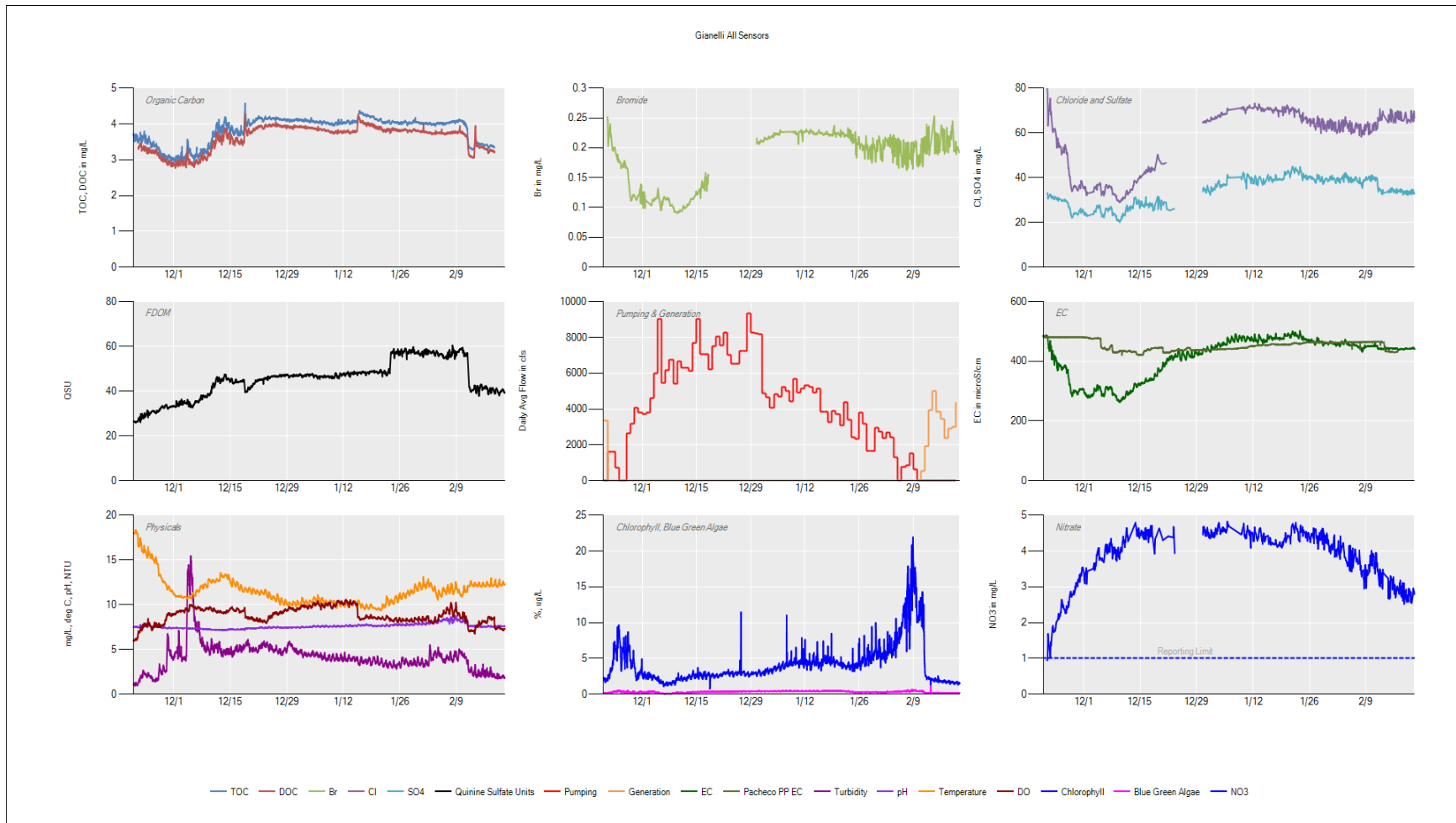


Significant Events: Nov 20th, 2019 to Feb 20th, 2020

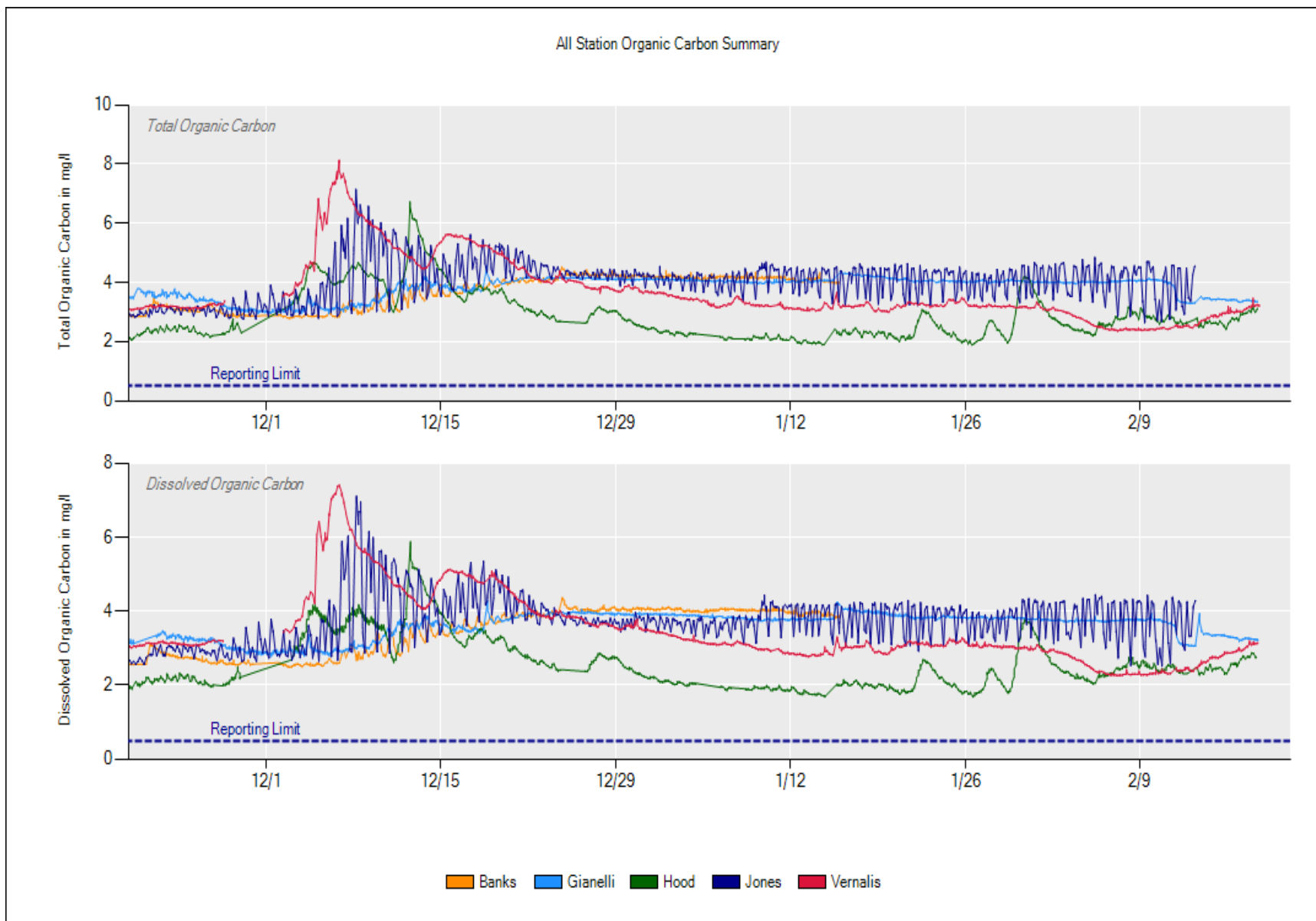
- **1/13:** Sievers Main motherboard stopped working. As of now the Sievers DOC/TOC is up and running.

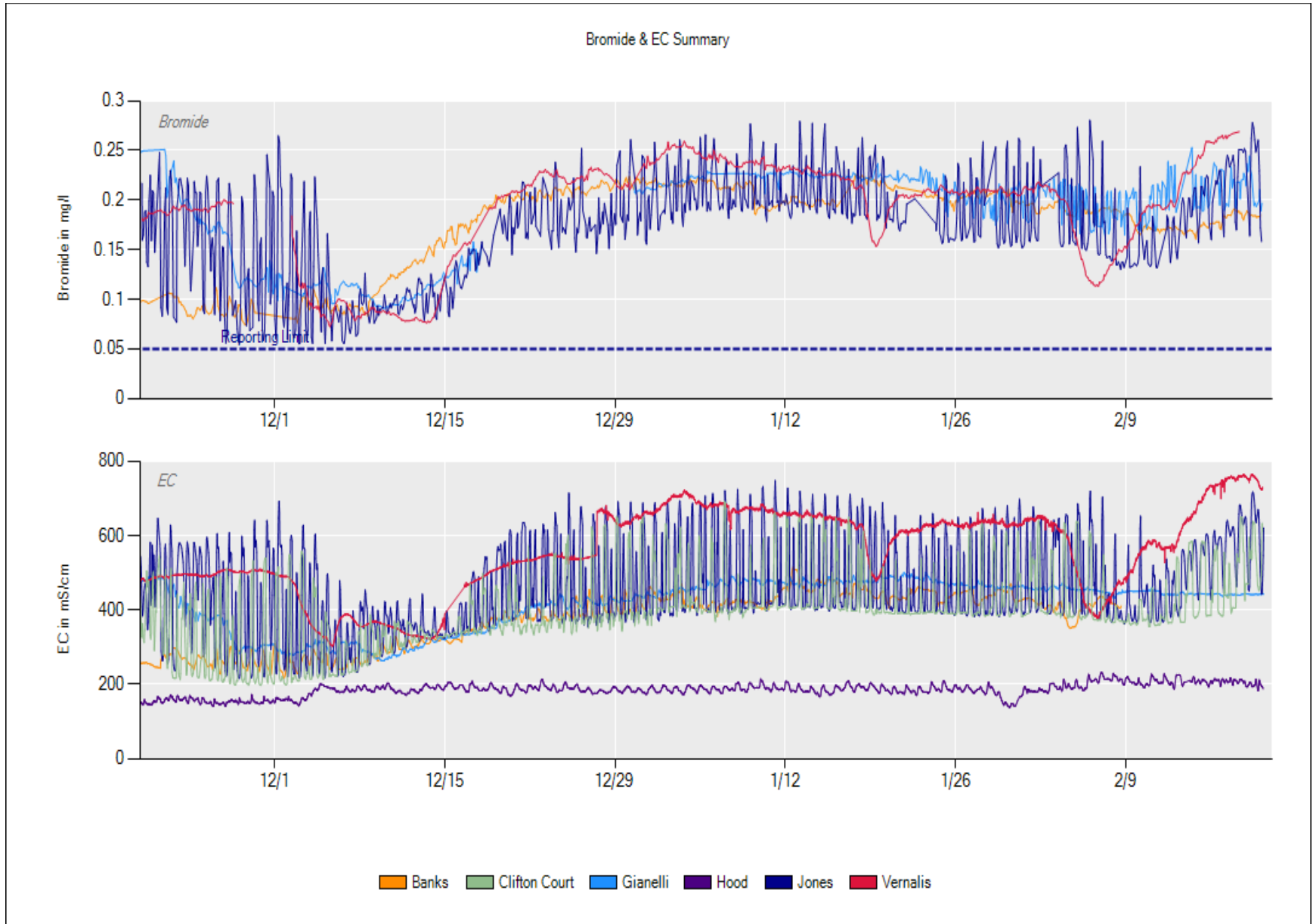


- **Upper Graph:** C3 turner Phycocyanin (RFUB) vs YSI Blue Green Algae probe (RFU).
- **Lower Graph:** C3 turner Red Chlorophyll and Chlorophyll a vs YSI Chlorophyll a

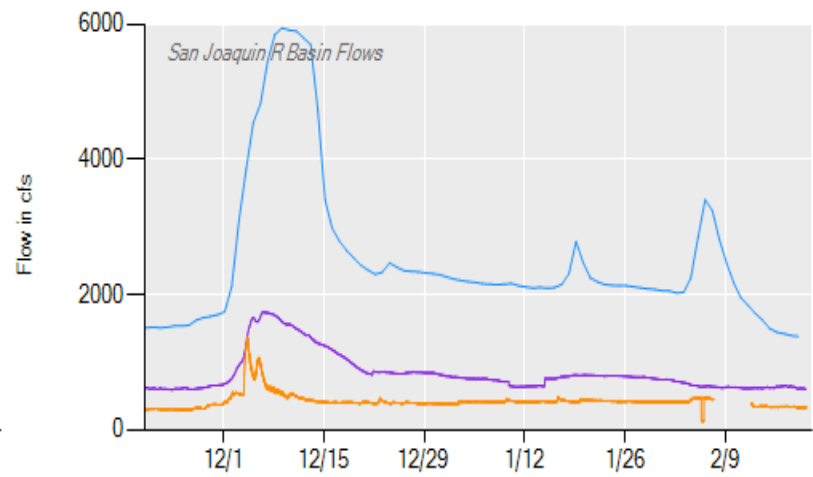
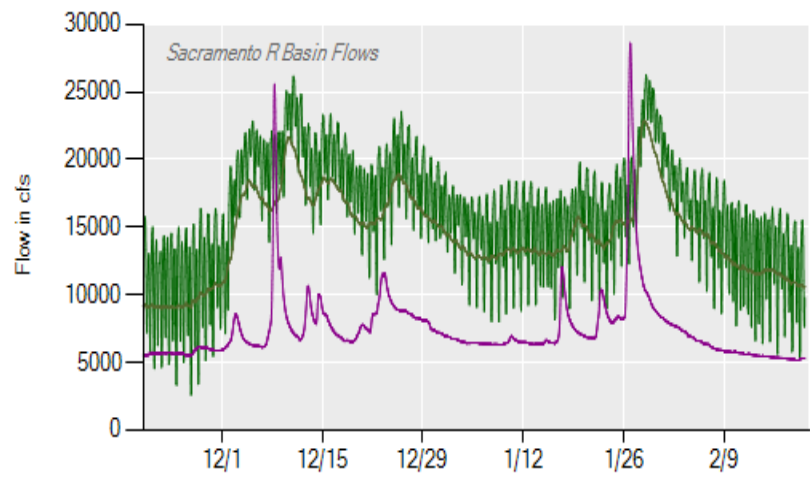
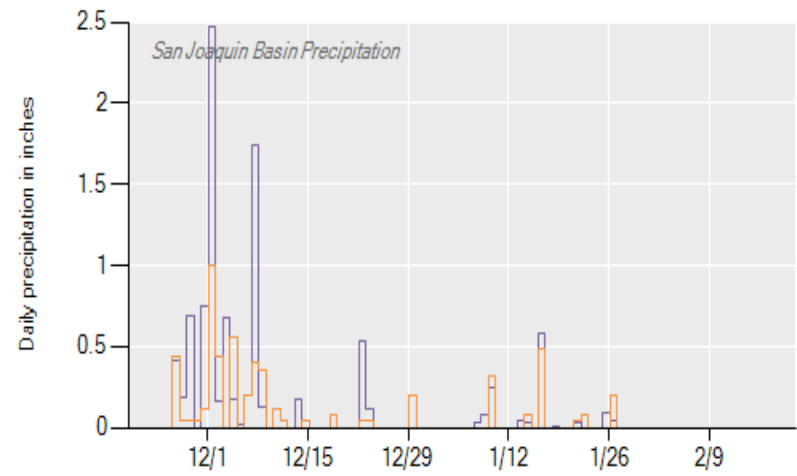
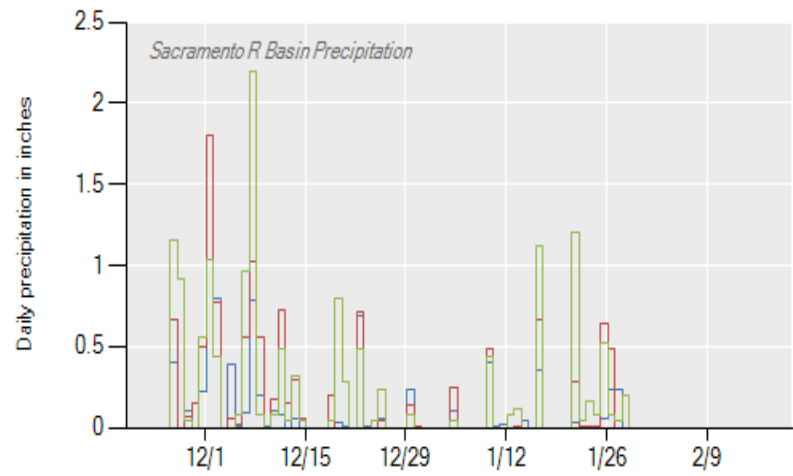


- 12/18/2019: changed all filters. exchanged WES with BIR. Made new check.
- 12/30/2019: Cleared a clog from the supply line, where the 1/4" tubing is reduced to 1/8". Used H2O2 and DI, checked flow, restarted on Default.
- 1/8/2020: Flushed 40-micron filter on pre module. Seem like the filter might be clogged. checked valves and they are all working. Loading pump is pumping decently. if there is a clog still might be on the line that goes to the DIOnex
- 1/15/2020: changed all filters. Ran standards for Sievers and Dionex. Took 40 micron filter out of Dionex.





Precipitation & Flow



- CSU Sacramento — Redding Fire Station — Stockton Fire Station — Sac R at Verona — SJR at Crows Landing — Stanislaus R at Ripon
- Oroville Dam — Exchequer Dam, Merced R. — Sac R at Freeport — Sac R at Vina-Woodson Br — Tuolumne R at Modesto — SJR R at Vernalis