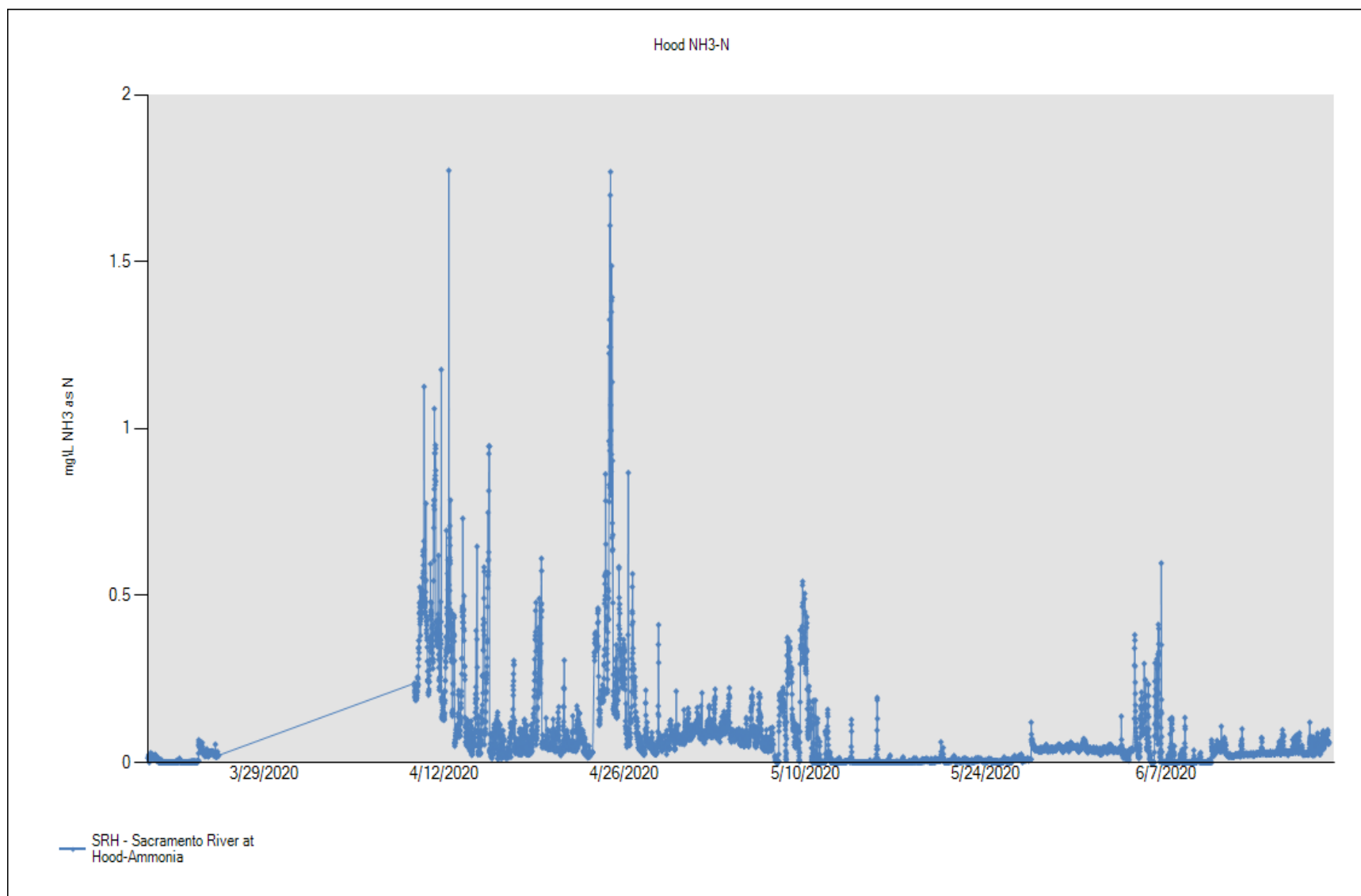
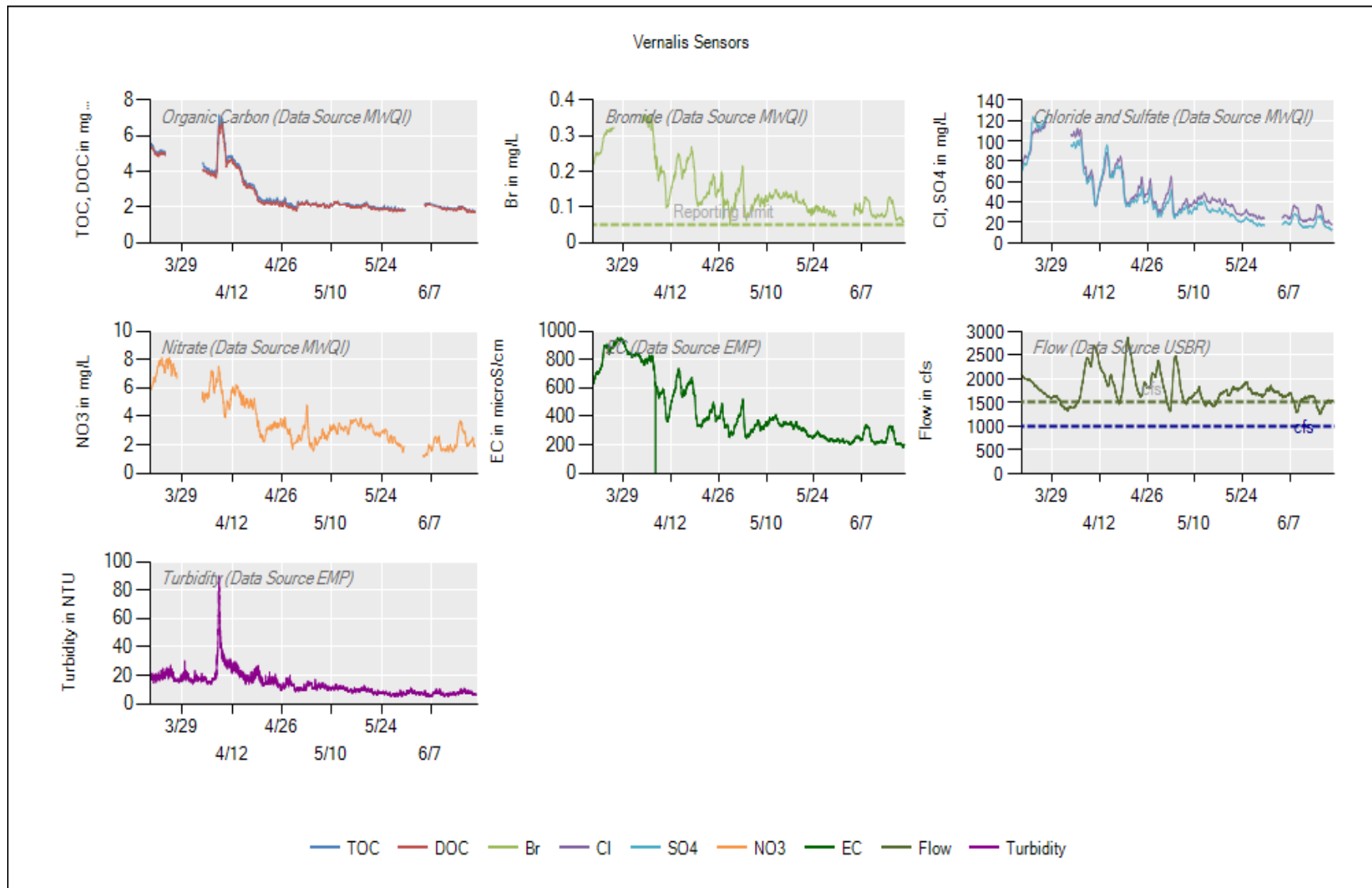


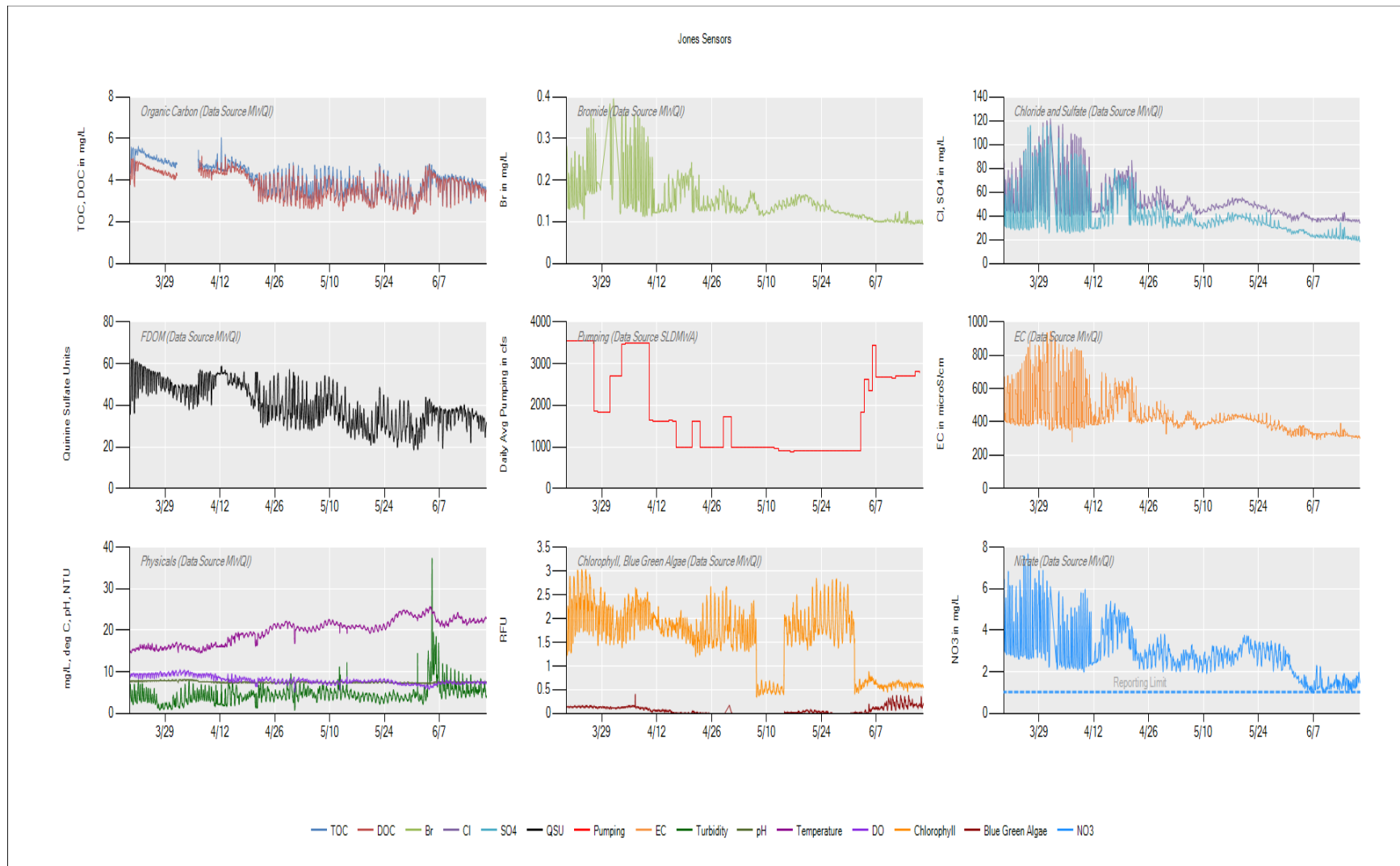
4/6: Outage due to Windows update restart – 4/9: Replaced all system filters – 4/23: Replaced all system filters – 5/7: Replaced all filters – 6/4: Replaced all filters



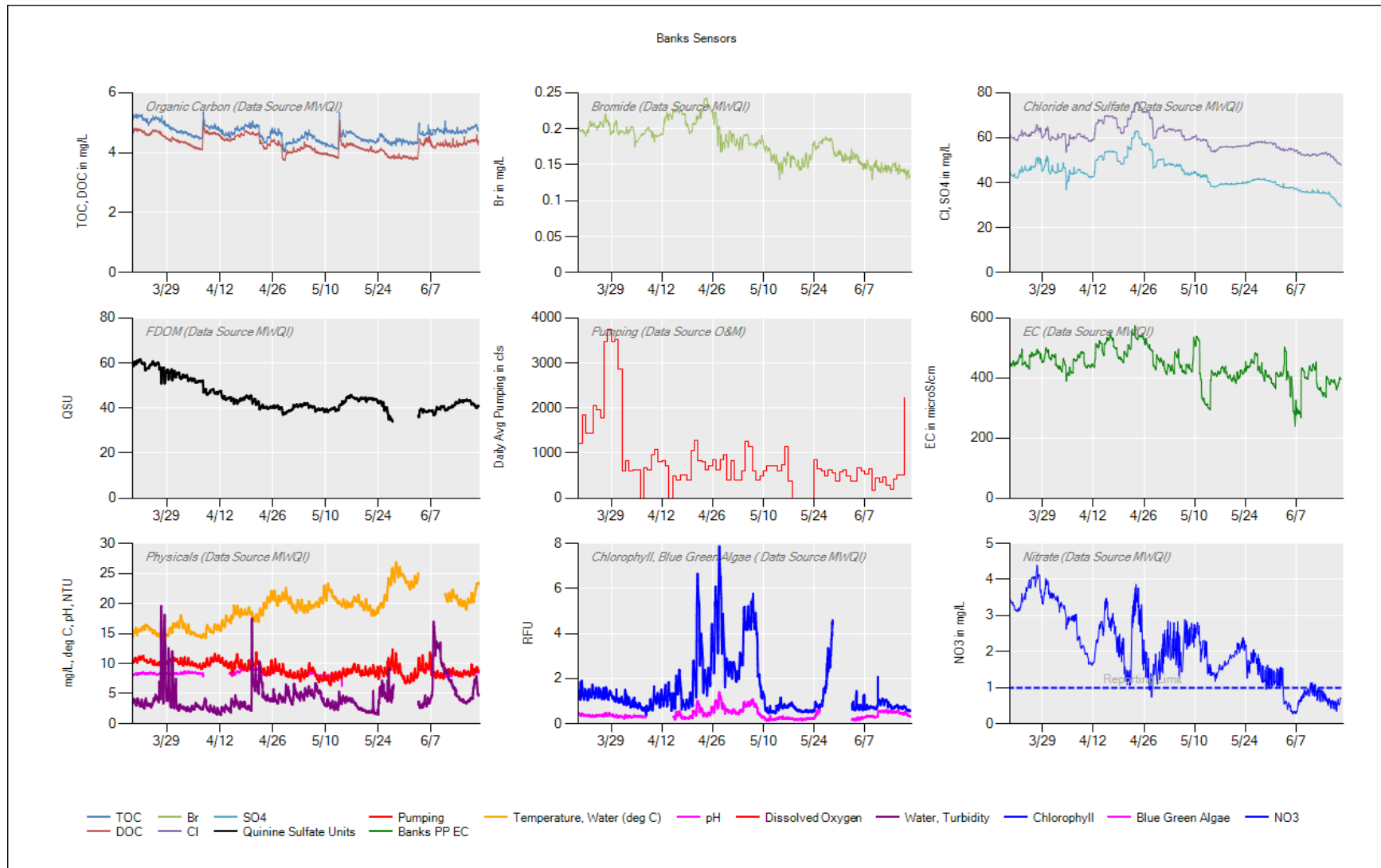
4/6: outage due to Windows update computer reboot, also filtered out questionable data – 4/9: performed annual maintenance on analyzer – 4/23: Rebuilt probe – 5/7: Rebuilt probe – 5/13: Reporting issue, we worked on it for a few days and finally fixed the problem – 6/4: Cleaned all lines, flushed with H2O2, rebuilt probe



**Recent Events:** Power outage/circuit breaker tripping on 5/30 (fixed 6/4) and 6/6 (fixed 6/9). Electrical loads redistributed and suspicious component removed. **Filter Changes:** 5/12 & 6/4. **Flows from Goodwin:** Pulse on 5/6, increases to 5/15. Both increases & decreases 6/5-6/15.



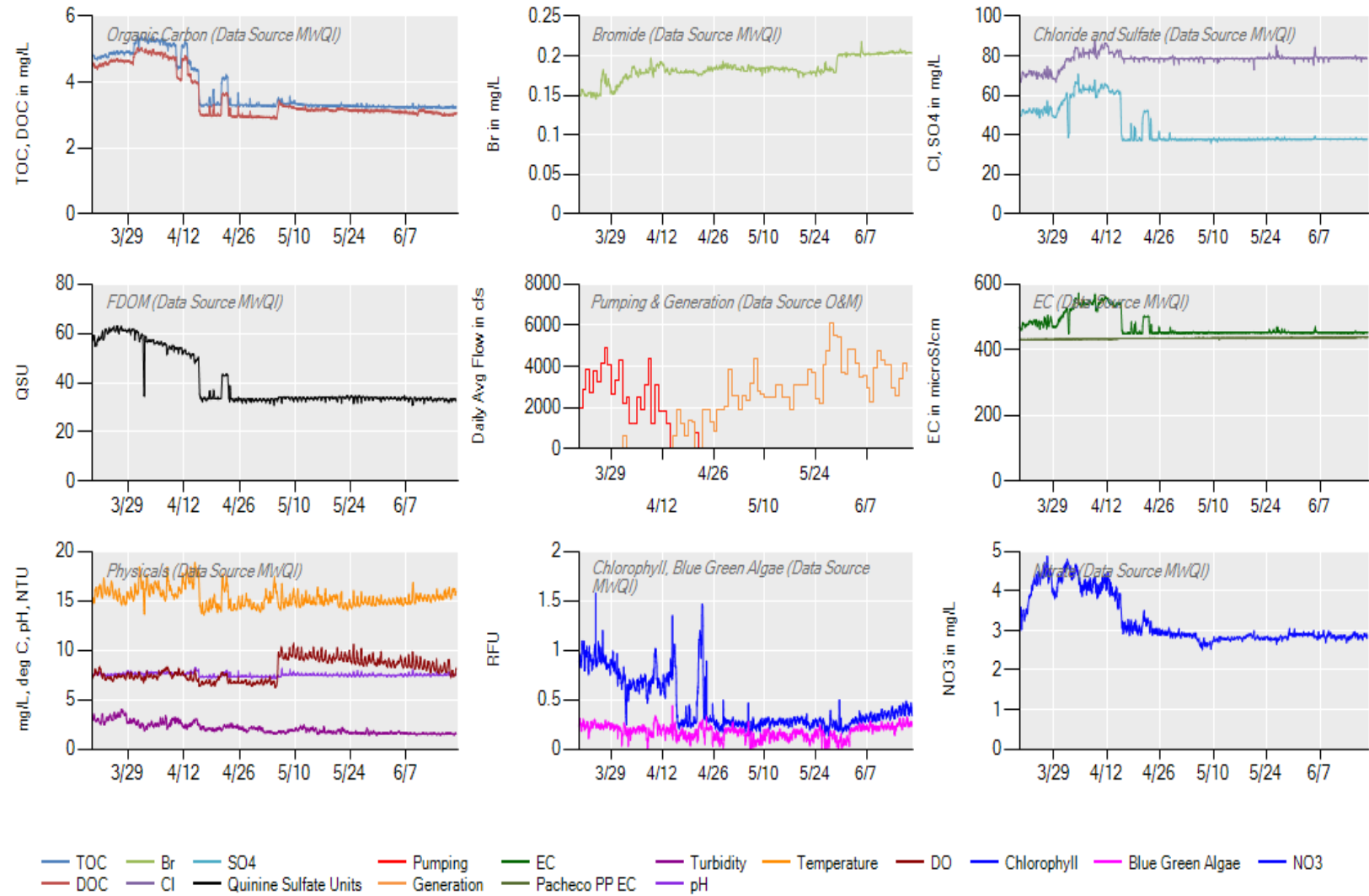
All instruments have been operational and reporting since the last update. TAL data was reporting higher because the EXO was internally set to report ug/L instead of RFU. The ug/L data was flagged as questionable. The lower values represent RFU data. Organic carbon has been nearly equal; DOC about 0.1 mg/L lower than TOC on average. The TOC valve will be checked during next site visit to confirm data values.

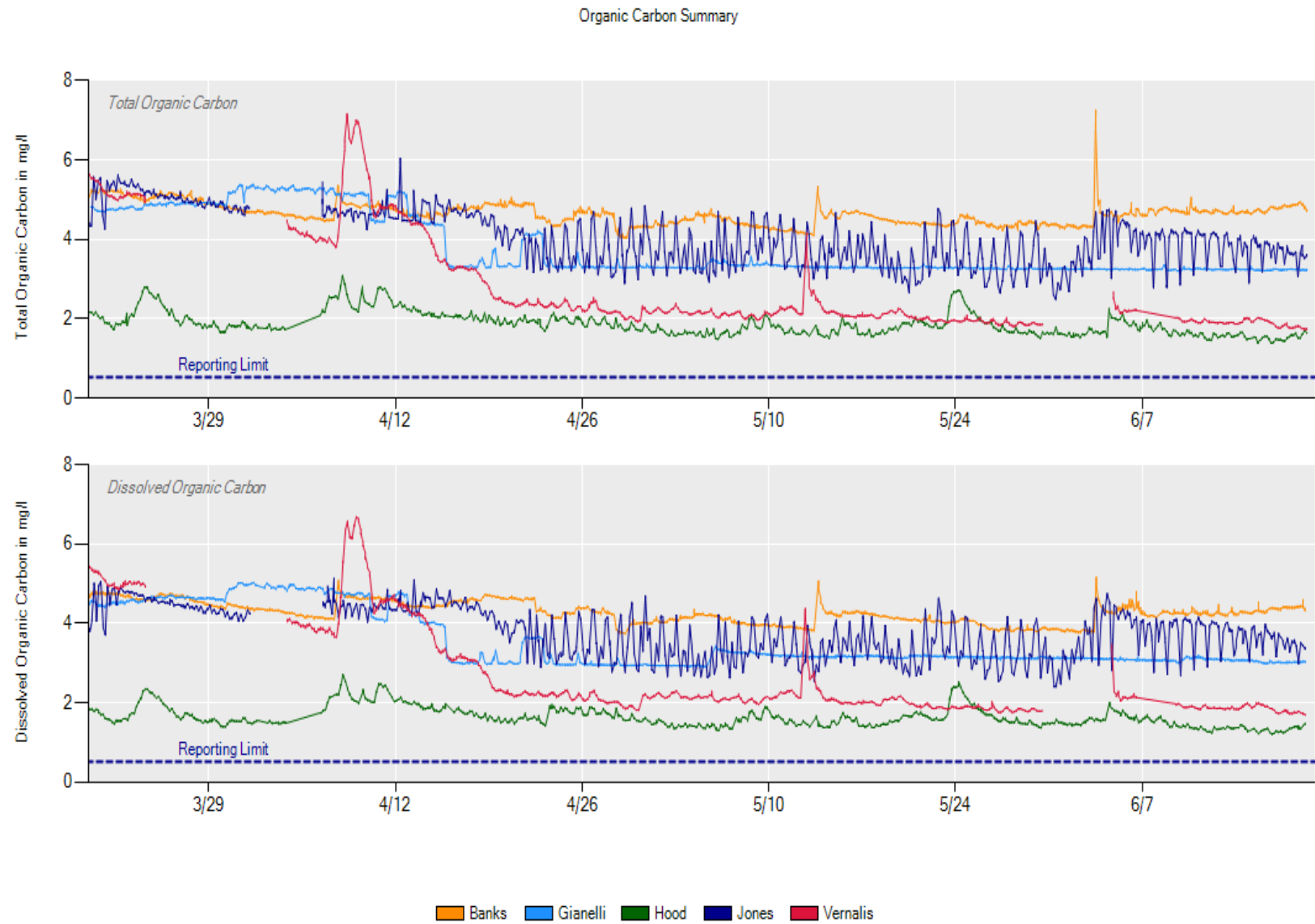


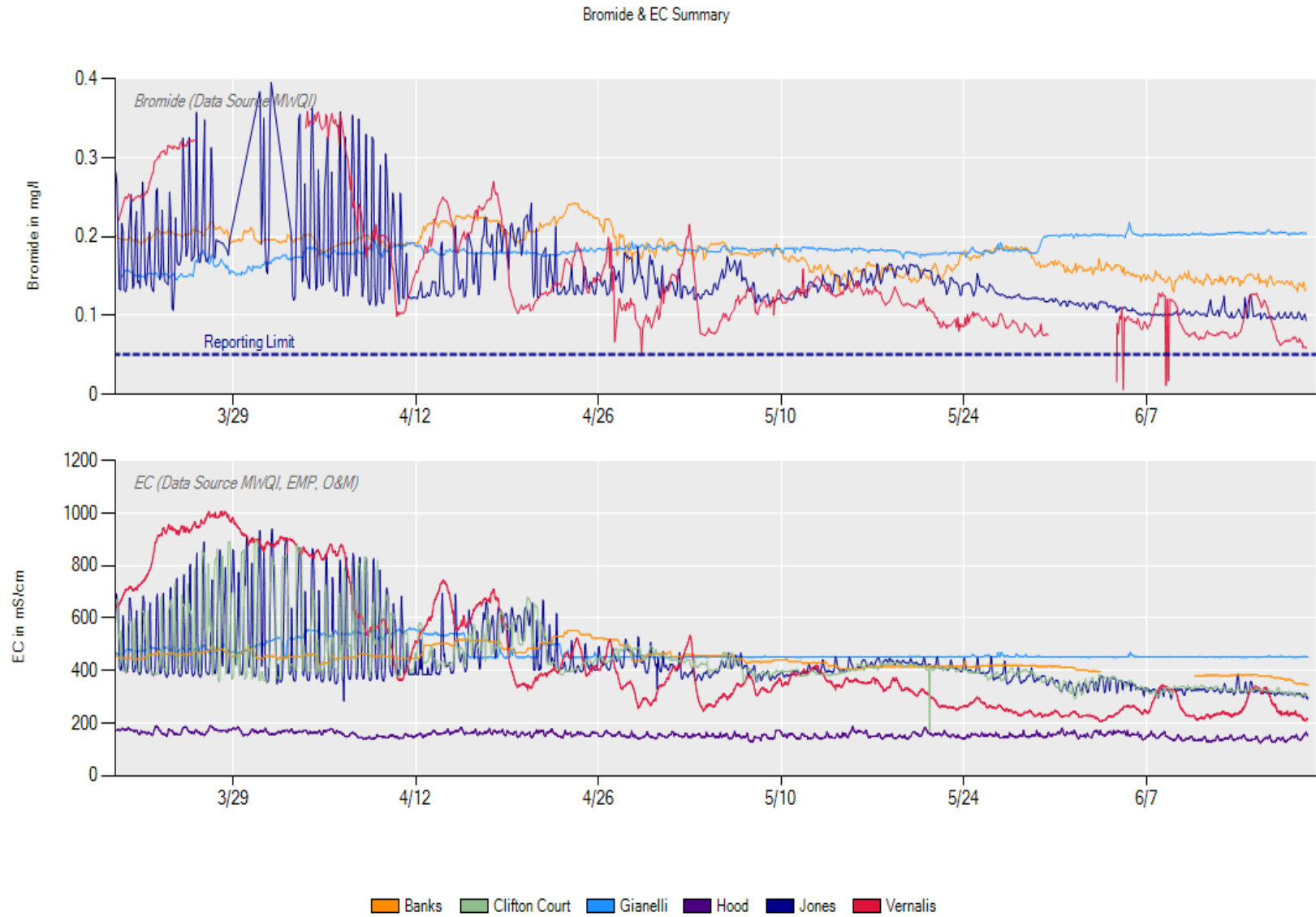
#### Significant Events: March 20<sup>th</sup>, 2020 to June 20<sup>th</sup>, 2020

- Sievers and Dionex ran well during the last three months.
- YSI Sonde had some issues with a fallen brush and a broken EC meter during the physical gaps around 5/29 to 6/3.

Gianelli All Sensors

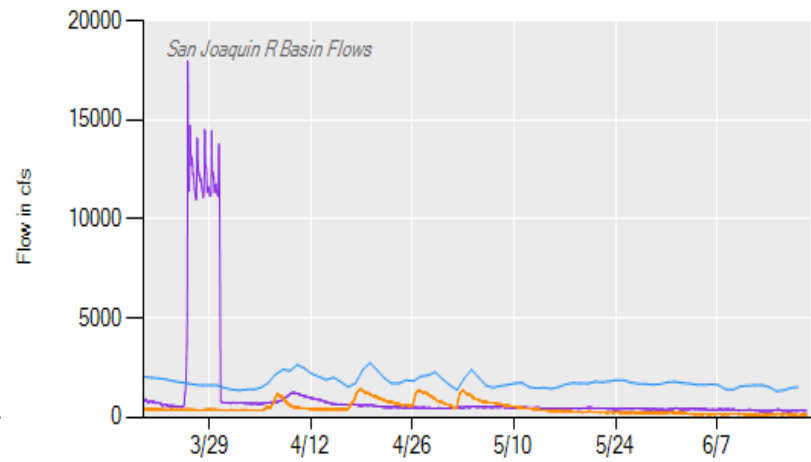
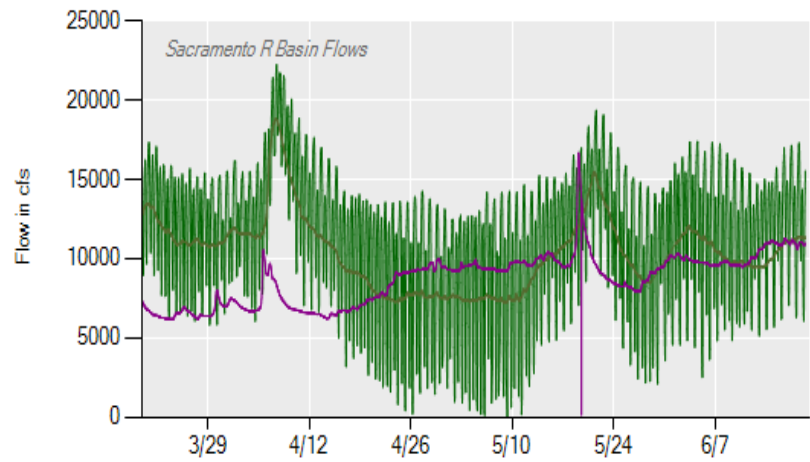
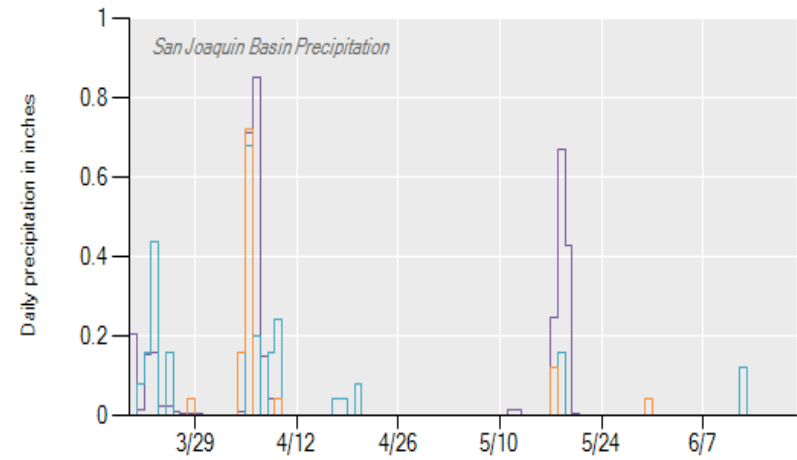
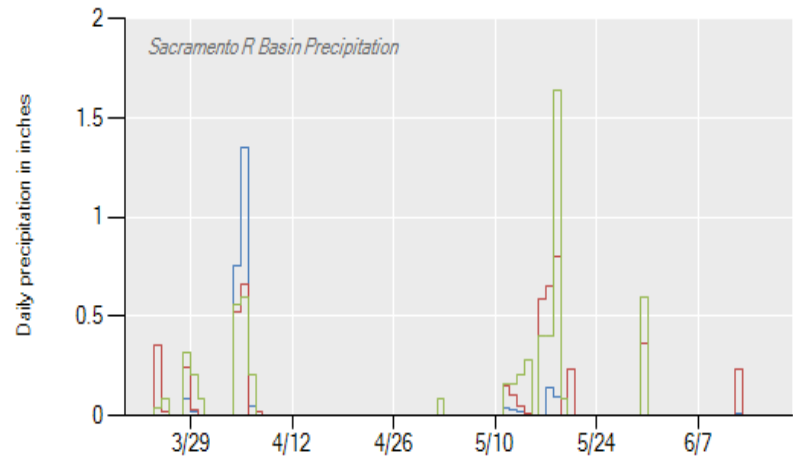








## Precipitation &amp; Flow



CSU Sacramento    Redding Fire Station    Friant Dam    Sac R at Freeport    Sac R at Vina-Woodson Br    Tuolumne R at Modesto    SJR R at Vernalis  
 Oroville Dam    Exchequer Dam, Merced R.    Stockton Fire Station    Sac R at Verona    SJR at Crows Landing    Stanislaus R at Ripon