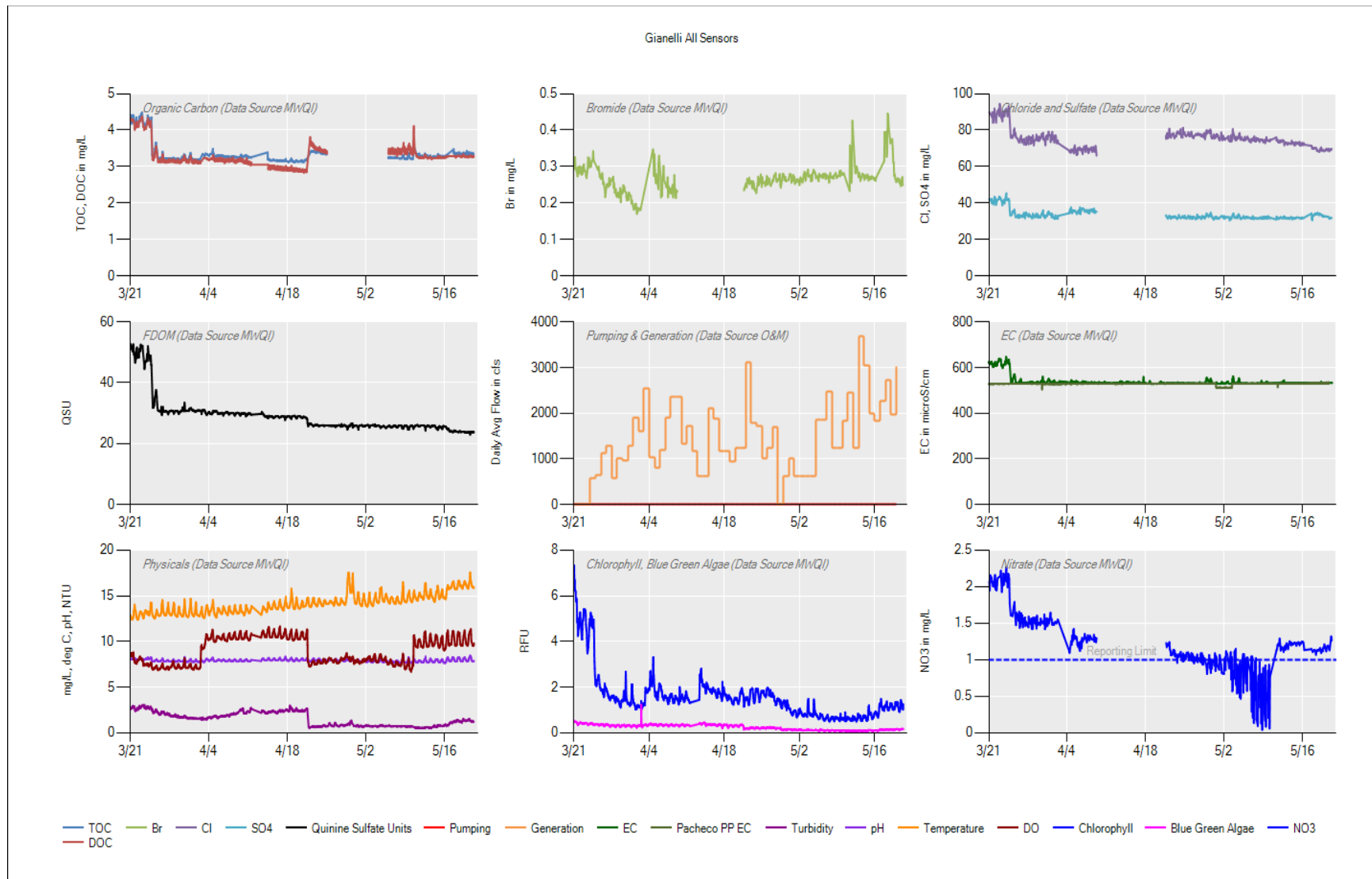
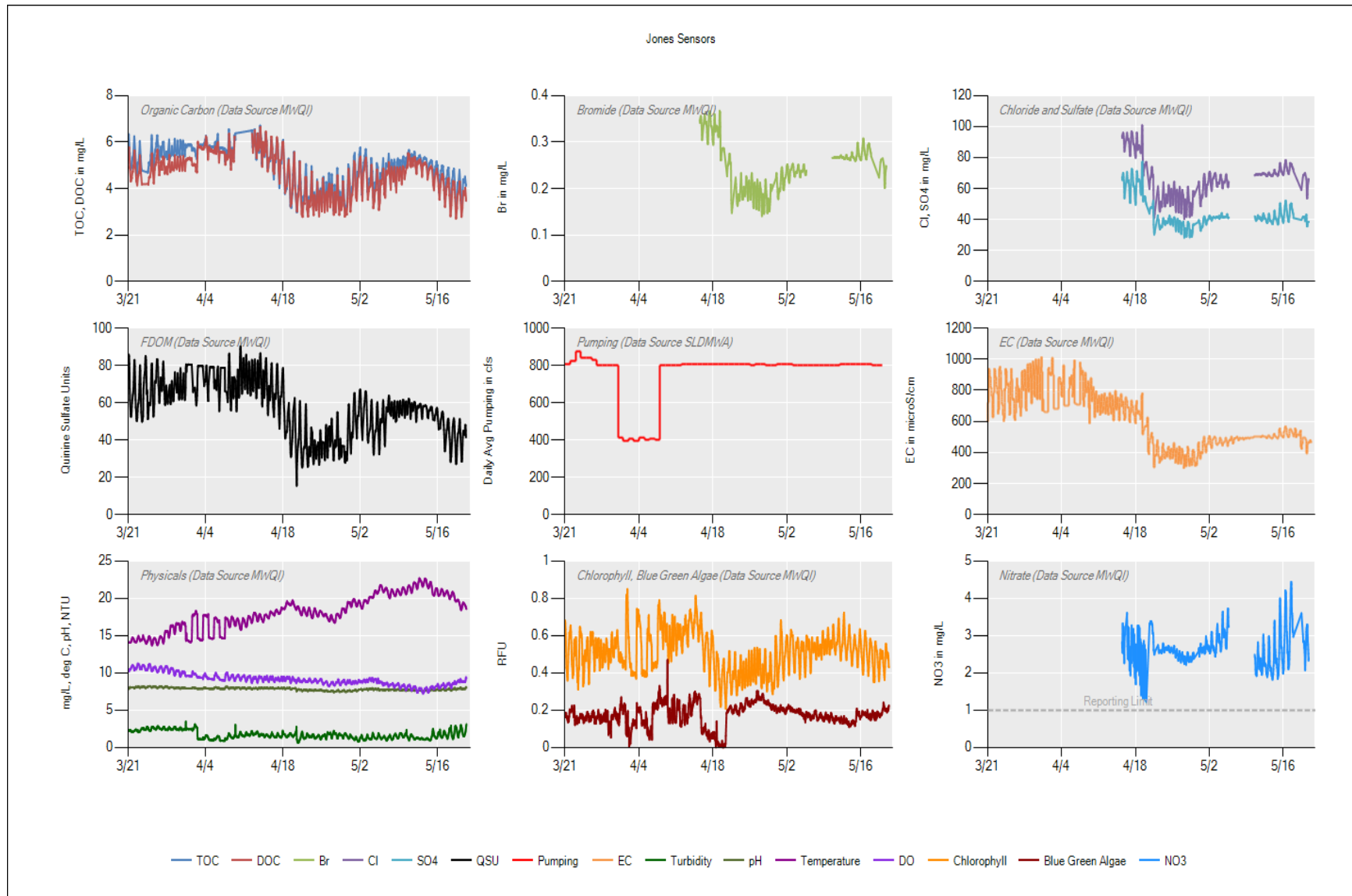


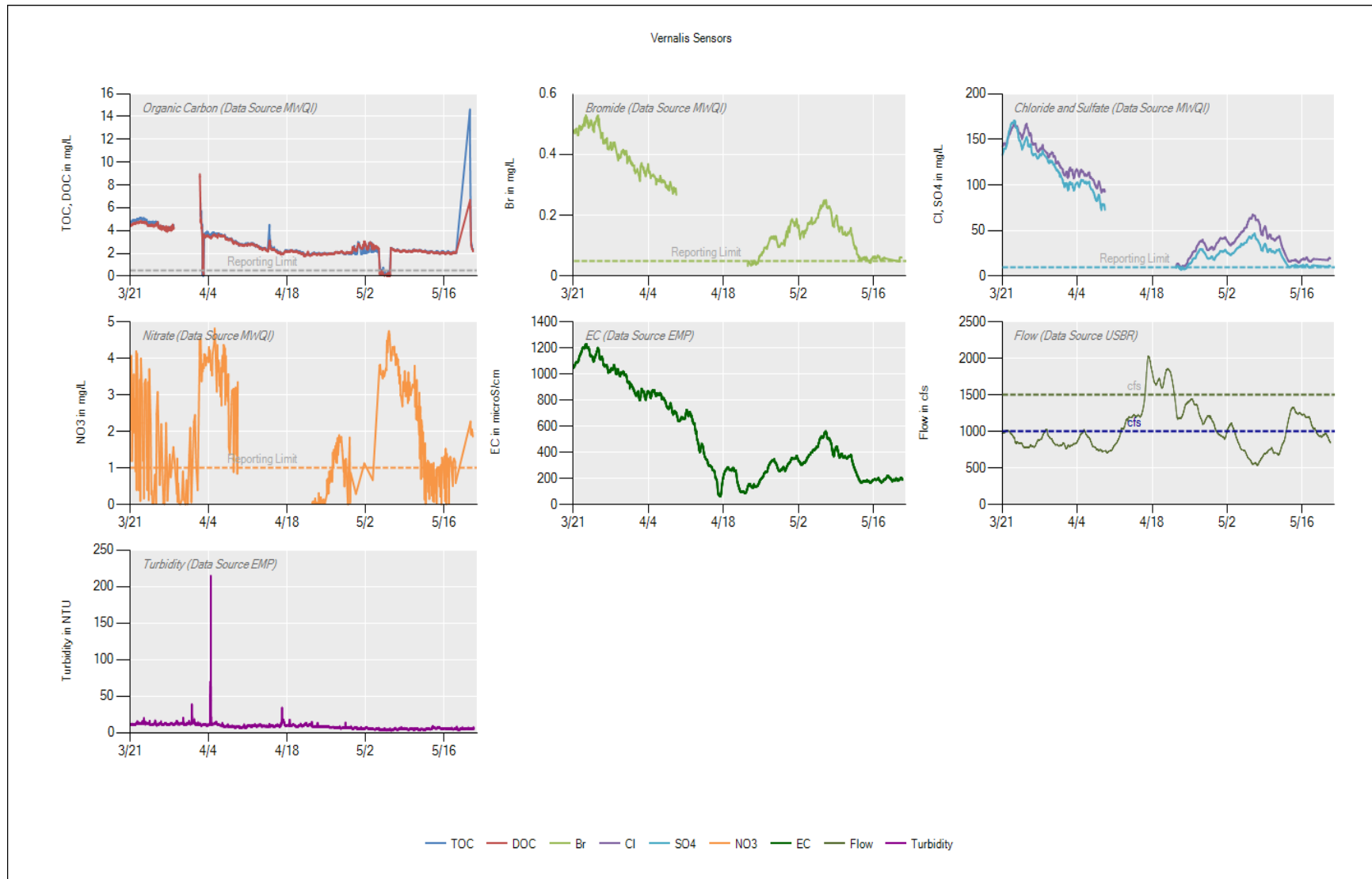
4/2: Replaced all system filters – 4/20: Replaced all system filters, cleaned some of the sample lines – 5/14: Replaced all system filters – 5/19: Replaced a consumable on the anion analyzer, re-calibrated



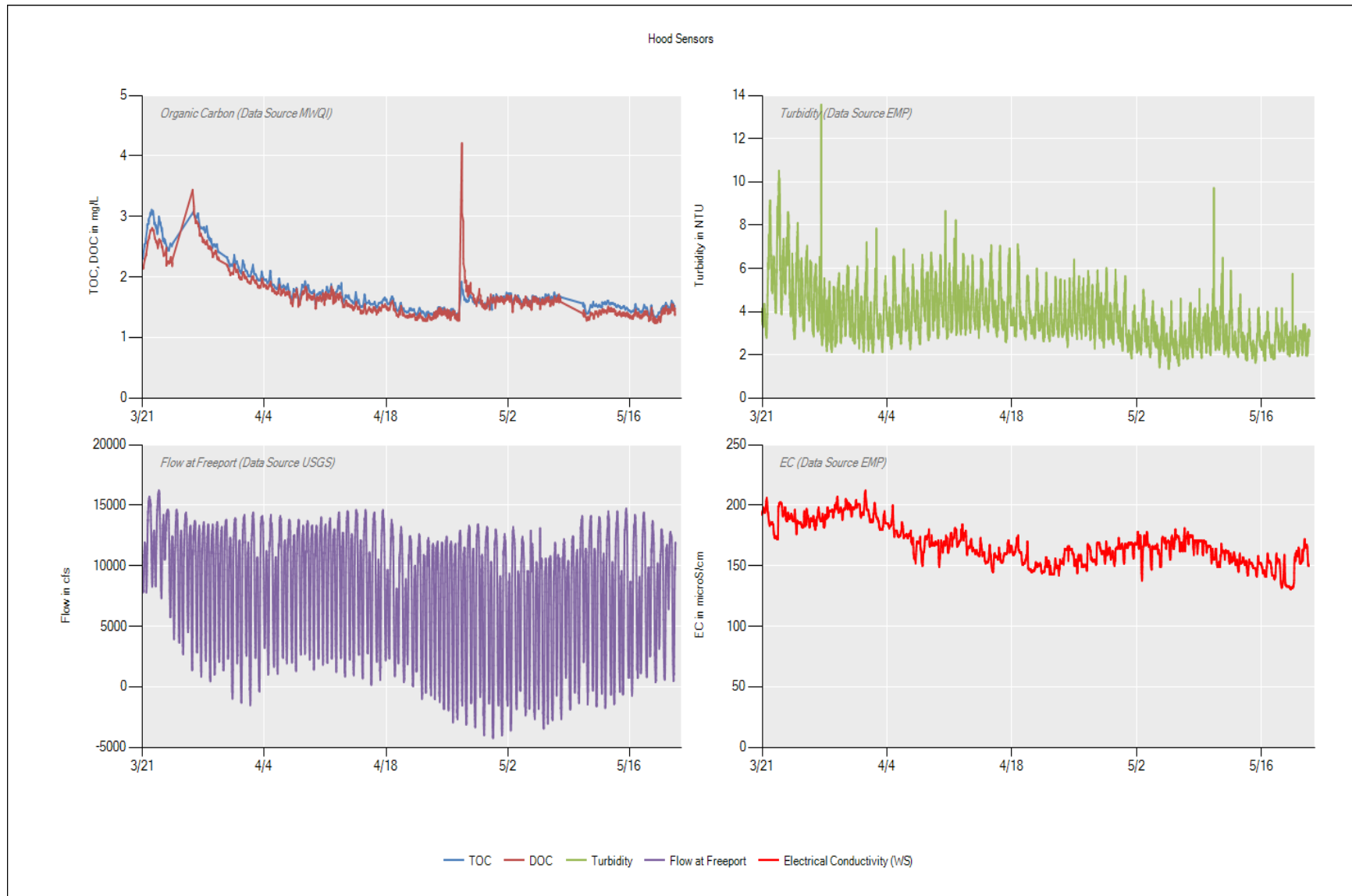
4/2: Replaced all system filters – 4/14: Carbon analyzer troubleshoot – 4/21: Replaced all system filters – 4/27: Analyzed a check standard on the anion analyzer – 5/10: Replaced all system filters, cleaned carbon analyzer and anion analyzer lines with H2O2, cleaned lines in and out of sonde – 5/17: Power outage over the weekend, analyzed QC standards on the carbon an anion analyzers



4/2: Replaced all system filters - 4/9: Replaced the 100 um filter, calibrated anion analyzer – 4/20: Replaced all system filters, exchanged sondes – 5/10: Replaced 100 um filter, cleaned sonde – 5/18: Replaced 100 um filter, rinsed sonde, replaced carbon analyzer consumables

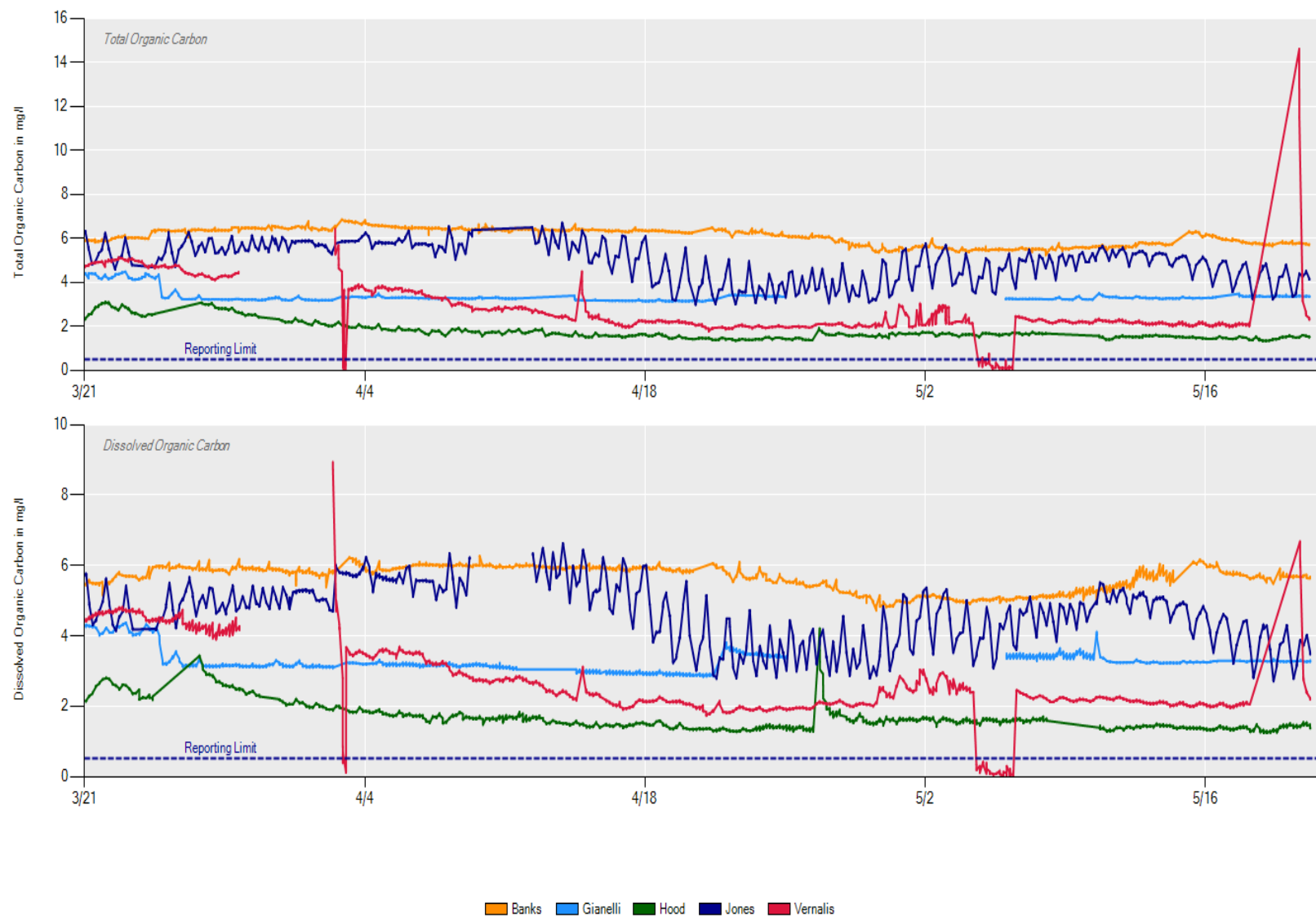


4/2: Replaced all system filters, UC Davis installed fish cages off the deck near pump – 4/14: Replaced all system filters, troubleshot anion analyzer over pressure issue – 4/21: Troubleshot anion analyzer calibration issue – 5/4: Replaced all system filters – 5/6: Troubleshot carbon analyzer issue

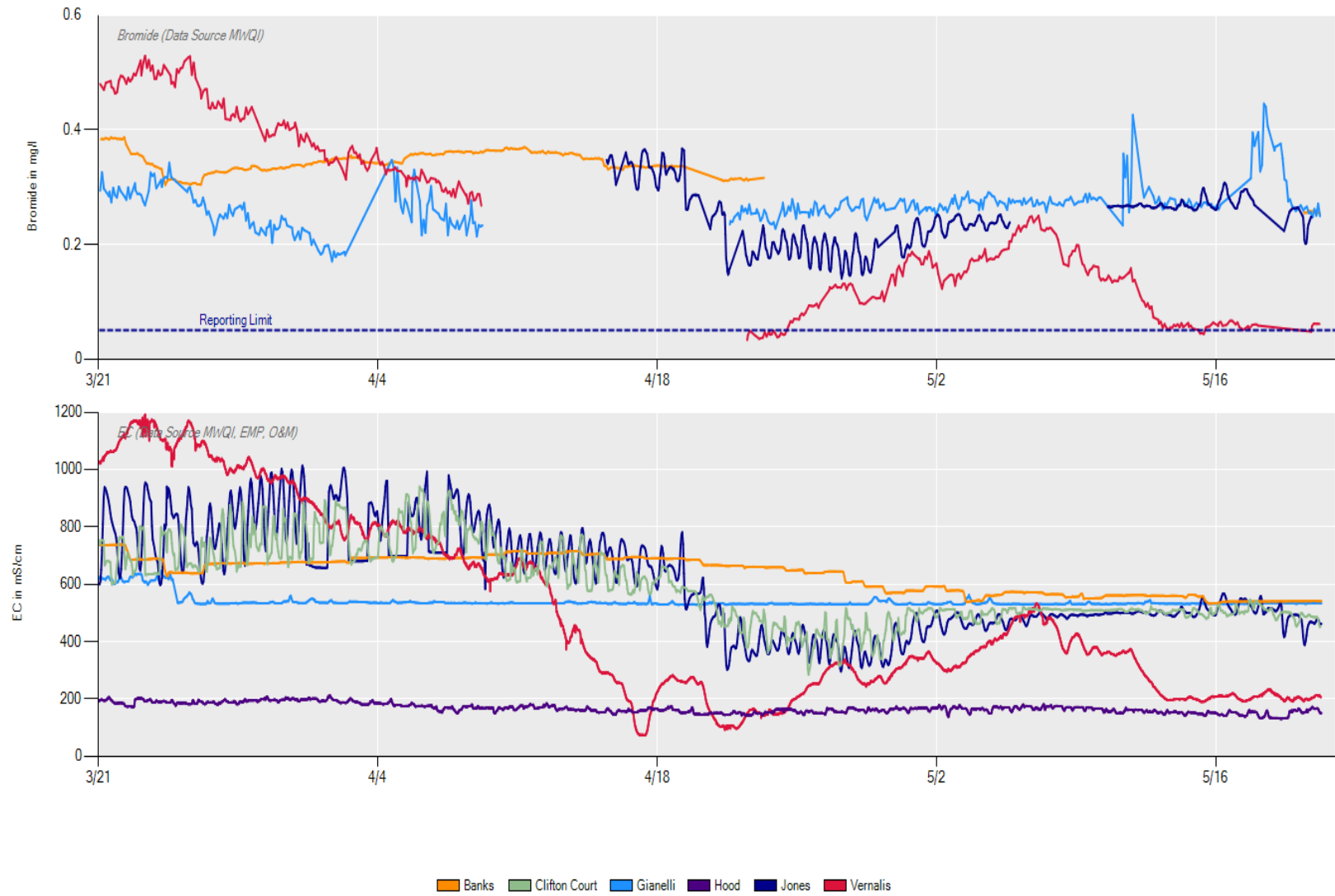


3/26: Replaced a carbon analyzer consumable, cleaned a carbon analyzer component, replaced all system filters – 3/30: Main sampling pump not flowing, reset and flow resumed, most likely caused by a power outage – 4/26: Replaced all system filters

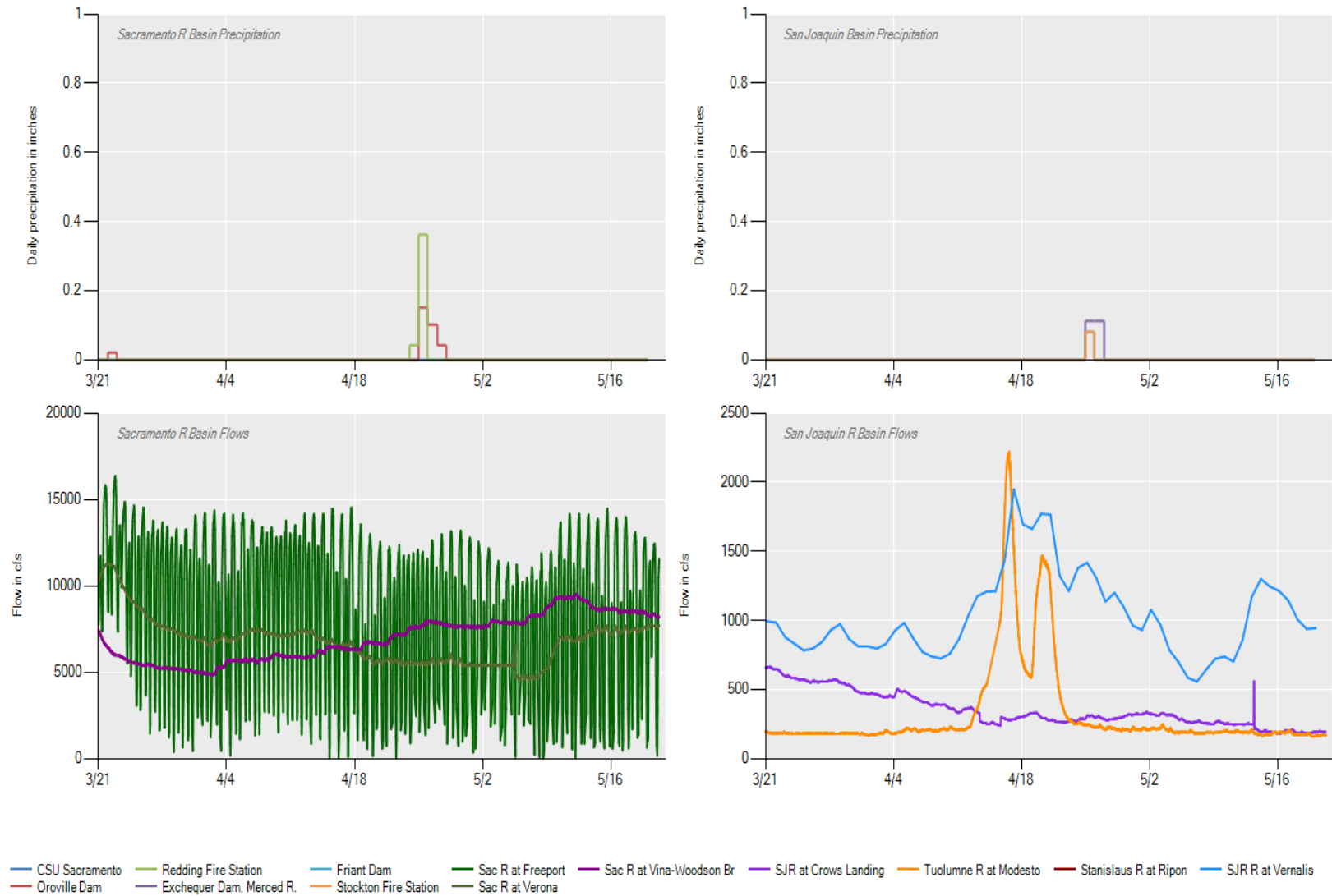
Organic Carbon Summary



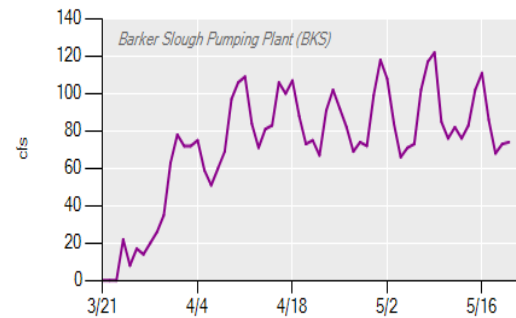
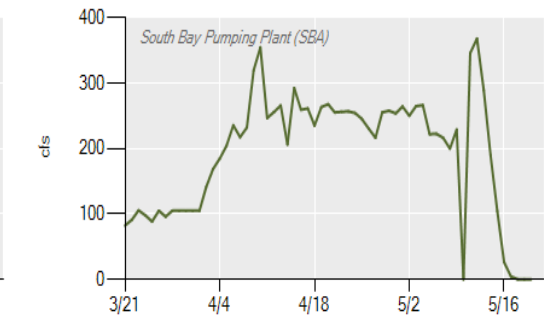
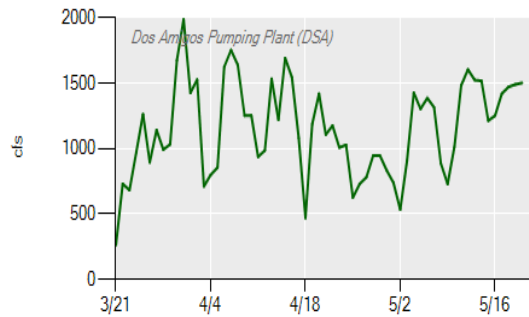
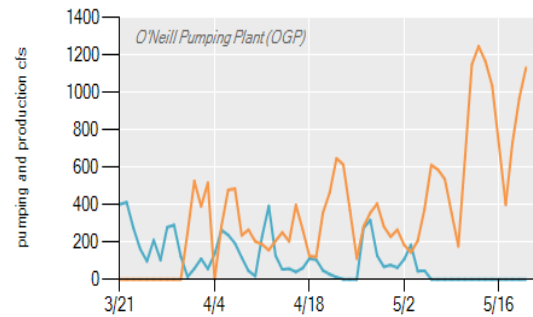
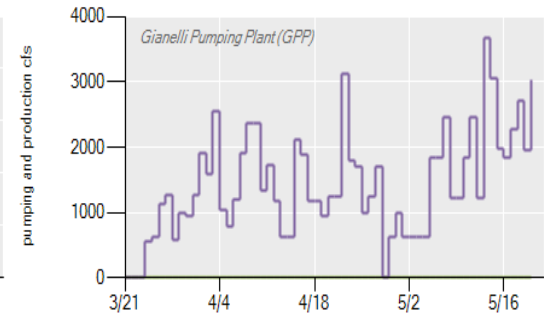
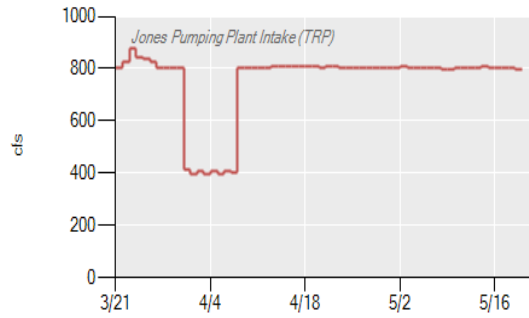
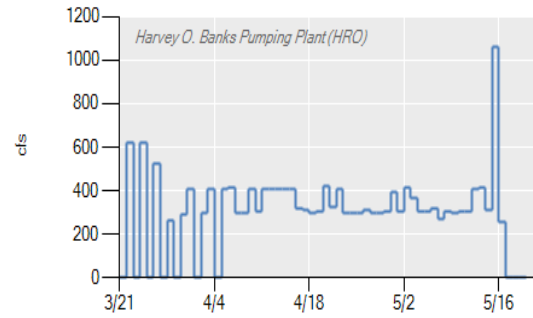
Bromide & EC Summary



Precipitation & Flow



Delta Pumping



— HRO — TRP — GPP Pumping — GPP Generation — OGP Pumping — OGP Generation — DSA — SBA — BKS